

# KÄRCHER

makes a difference

## KARCHER IN INDIA FOR OVER 20 YEARS



**KARCHER PROFESSIONAL RANGE 2016**

Experience how Kärcher makes a difference.

## Kärcher, the worldwide market leader

All over the world the Kärcher name stands for power, quality and innovation and cleaning expertise that has been setting the highest of standards for 80 years. As the inventor of high-pressure cleaning, Kärcher is today a world market leader and one of the driving forces behind technological developments. Kärcher employs more than 11,000 people and has more than 100 subsidiaries all over the world. More than 900 engineers and technicians at 5 engineering centers are working on further improvements and new products, using the most advanced technologies in design, development and testing in their quest for even higher performance, long service life and better environmental protection. They are guided by the principle that the customer is the measure of all things

# 80 YEARS



reddot design award



Focus Energy



### Innovative from the very beginning

In 1950 Kärcher developed the first hot water high-pressure cleaner for professional cleaning

### Degree of innovation

More than 1100 patents have been registered from 1935 till today.

### Excellent performance

Every year Kärcher receives awards, commendations and certificates for design, ergonomics, performance and environmental protection.

### All over the world

Kärcher is active in over 190 countries.

### Worldwide customer service

More than 40,000 sales outlets all over the world provide a support network that is second to none and enable our customers to find fast and comprehensive help with all their questions about cleaning and our products.

### Clean environment

Kärcher engineers work on environmental protection daily with new products, technologies and investments in product facilities.

## Cold Water High Pressure Cleaners



# KÄRCHER



HD 5/11



HD 7/18 - 4 M



HD 7/16 - 4 Cage Classic



HD 10/25 - 4 S



HD 1050 B

Sr. No.	Machine Model	Supply Voltage (Phase)	Water Flow (l/h)	Max Pressure (bar)	Operating Pressure (bar/Mpa)	Power Rating (kW)	Detergent Tank (l)	Weight (kg)	Dimension (l x w x h) (mm)
1	HD 5/11	1	500	130	115/11.5	2.2	-	19	360 x 375 x 925
2	HD 5/12 C	1	500	150	120/12	2.3	-	22	360 x 375 x 925
3	HD 6/15 C	1	230-560	190	30-150 / 3-15	3.1	-	23	360 x 375 x 925
4	HD 7/18 - 4 M	3	240-700	215	30-180/ 3-18	5	2 x 2.5 L Bottles	48	467 x 407 x 1010
5	HD 7/16 - 4 Cage Classic	3	400-700	220	160 / 70	4.3	-	55	780 x 360 x 500
6	HD 10/25 - 4 S	3	500-1000	275	3-250 / 3-25	9.2	6	62	560 x 500 x 1090
7	HD 13/35-4 *	3	1260	400	350/35	15	-	190	930 x 800 x 920
8	HD 9/50 Cage *	3	900	575	500/50	15	-	190	930 x 800 x 920
9	HD 801 B *	Petrol - Honda	650	160	150/15	3.6	-	34	1044 x 542 x 662
10	HD 1050 B *	Petrol - Honda	400-930	250	40-230 / 4 - 23	8.2 / 9.75	-	66	1044 x 549 x 662
11	HD 1050 DE *	Diesel - Yanmar	400-930	250	40-230 / 4-23	7.4	-	103	1050 x 540 x 720

## Hot Water High Pressure Cleaners



HDS 5/15 U



HDS 6/14 C



HDS 10/20-4 M Eco



HDS 8/16-4 kW-4 E (12 / 24 / 36 kW)

Sr. No.	Machine Model	Supply Voltage (Phase)	Water Flow (l/h)	Operating Pressure (bar)	Power Rating (kW)	Maximum Temperature (°C)	Fuel Tank (l)	Detergent Tank (l)	Weight (kg)	Dimension (l x w x h) (mm)
1	HDS 6/14 C *	1	240-560	30-140/3-14	3.6	155/80	15	10	93	1060 x 650 x 920
2	HDS 10/20 - 4M Eco	3	500-1000	30-200/3-20	7.8	155/80	25	20+10	171	1330 x 750 x 1060
3	HDS 8/18 4M	3	400-800	30-180/3-18	5.5	155/80	25	20	155	1330 x 750 x 1060
4	HDS - E 8/16-4 M 24 kW	3	300-760	30-160/3-16	28.5	45/85	Electrical	20+10	112	1330 x 750 x 1060

## Related Accessories:



FR 30  
Splash Guard



FRV 30  
Splash Guard with Suction



Under Body Lance



Dirt Blaster



Drain Cleaning Hose

\* Longer Delivery Time

\*product shown in photograph may vary from the actual



IVC 60/24 - 2Ap



IVC 60/30 Ap



IV 60/30



IV 100/75



IVL 120/30

Sr. No.	Machine Model	Phase (ph)	Voltage / Frequency (v / hz)	Air Flow Rate (l/s)	Vacuum mbar / kPa	Container Capacity (l)	Power Rating in Operation (k)	Filter Area (m <sup>2</sup> )	Hose Dia (mm)	Weight (kg)	Dimension (l x w x h) (mm)
1	IVC 60/24 - 2 Ap	1	230 / 50	2x74	254 / 25.4	60	2.4	0.95	ID 42/ 52/72	60	970 x 690 x 995
2	IVC 60/24 - 2 Tact 2 *	1	230 / 50	2X74	254 / 25.4	60	2.4	0.95	ID 42/ 52	60	970 x 690 X 995
3	IVC 60/30 Ap	3	400 / 50	68	286 / 28.6	60	3	1.9	ID 42 / 52 / 72	95	970 x 690 x 1240
4	IVC 60/30 Tact 2	3	400 / 50	68	286 / 28.6	60	3	1.9	ID N 42 / 52	95	970 x 690 x 1240
5	IV 60 /30	3	400 / 50	68	285 / 28.6	60	3	2.3	ID 51	96	870 x 640 x 1650
6	IV 100/55 *	3	400 / 50	139	280 / 28	100	5.5	2.3	ID 61	155	1220 x 670 x 1530
7	IV 100/75 *	3	400 / 50	153	330 / 33	100	7.5	4.3	ID 61	256	1280 x 690 x 1820
8	IV 60/30 M B1 ( Z 22 ) *	3	400 / 50	68	286 / 28.6	60	3	2.3	ID 51	104	870 x 640 x 1820
9	IV 100/40 M B1( Z 22 ) *	3	400 / 50	139	180 / 18	100	4	2.3	ID 61	141	1220 x 670 x 1530
10	IV 100/75 M B1 ( Z 22 ) *	3	400 / 50	153	330 / 33	100	7.5	2.3	ID 61	256	1280 x 690 x 1820

M B 1 ( Z 22 ) : M Class Filter / ATEX Certified Zone 22 )

Sr. No.	Industrial Vacuum cleaner with discharge pump	Phase (ph)	Voltage / Frequency (v / hz)	Airflow Rate (l / s)	Vacuum mbar / kPa	Container Capacity liquid (l)	Container Capacity Chips (l)	Intake Performance (kW)	Hose Dia (mm)	Weight (kg)	Dimension (l x w x h) (mm)
1	IVL 50/24-2 *	1	230 / 50	2 x 56	235 / 23.5	50	38	2.4	ID 51	89	975 x 650 x 1260
2	IVL 120/27-1 *	1	230 / 50	65	245 / 24.5	120	39	2.7	ID 51	143	1250 x 660 x 1470
3	IVL 120/30 *	3	400 / 50	68	260 / 26.0	120	39	3	ID 51	150	1250 x 660 x 1470

**Cleaning devices for industrial cleaning**



PC 100 M2 BIO



IB 7/40

Sr. No.	Dry Ice Blasting	Phase	Air Pressure (bar / MPa)	Air Quality	Air Flow (m3 / min)	Sound pressure level (dB(A))	Dry ice capacity (Kg)	Dry ice consumption (Kg / h)	Weight (Kg)	Pallets (Dia - mm)	Dimension
1	IB 7/40 Classic *	1	2-10 / .02-1	Dry and oil free	0.5 - 3.5	99	15	15 - 50	69	3	768 x 510 x 1100

Sr. No.	Parts cleaner	Phase	Pressure (bar / MPa)	Flow Rate (l / h)	Working area (mm)	Sound pressure level (dB(A))	Load capacity (Kg)	Tank Capacity (l)	Weight (Kg)	Heating output (kW)	Dimension
1	PC 100 M2 BIO *	1	0.3 / 0.03	900	1041 - 660	58	100	80	44	1	952 x 1181 x 1067

**Related Accessories:**



Floor Nozzle



Crane Forklift



Pipe Cleaning Nozzle



Triangular Nozzle



Industrial Kit

**Ap** : Manual pressed Filter Cleaning

**TACT / TACT 2** : Automatic Filter Cleaning

**\* Longer Delivery Time**

# Dry Vacuum Cleaners



# KÄRCHER



EB 30/1 Adv



BV 5/1



T 15/1



CV 48/2



CV 60/2 RS

Sr. No.	Machine Model	Air Flow Rate (l/s)	Vacuum mbar / kPa	Sound Level	Container Capacity (l)	Max. Power Rating		Weight (kg)	Hose Dia (mm)	Dimension (l x w x h) (mm)
				(dB(A))		(W)	Brush (W)			
1	T 10/1	61	244	63	10	1250	-	6	32	355 x 310 x 385
2	T 12/1	61	244	61	12	1300	-	6.6	32	340 x 315 x 410
3	T 12/1 eco! efficiency	43	230	56	12	750	-	6.6	32	340 x 315 x 410
4	T 15/1	61	244	59	15	1300	-	8	32	406 x 320 x 434
5	T 15/1 eco! Efficiency	43	230	56	15	750	-	8	32	406 x 320 x 434
6	BV 5/1 *	61	244	62	5	1300	-	5.3	32	400 x 320 x 540
7	T 9/1 Bp *	61/35	244/123	62	9	1300/300	-	9.4	32	410 x 325 x 390
8	CV 38/2	48	250	67	5.5	1200	150	9.5	35	351 x 391 x 1215
9	CV 48/2	48	250	67	5.5	1200	150	10	35	350 x 485 x 1215
10	CV 66/2 *	52	143	73	35	1650	400	72	-	1270 x 770 x 1120
11	CV 60/2 RS *	34	117	68	17	1224	373	123	-	1120 x 640 x 1290

Sr. No.	Machine Model	Working Width (mm)	Operating Time (Carpet / Hard Surface) (min)	Sound Level (dB(A))	Container Capacity (l)	Battery Charging Time (min)	Weight (kg)	Hose Dia (mm)	Dimension (l x w x h) (mm)
1	EB 30/1 Adv	300	30/45	56	1	180	2.3	-	250 x 300 x 1100

# Wet & Dry Vacuum Cleaners



NT 27/1



NT 35/1 Ap



NT 65/2 Ap



NT 75/2 TACT 2 Me

Sr. No.	Machine Model	Air Flow Rate (l/s)	Vacuum mbar / kPa	Sound Level	Container Capacity (l)	Power Rating (W)	Weight (kg)	Hose dia (mm)	Dimension (l x w x h) (mm)
				(dB(A))					
1	NT 27/1	67	200	72	27	1380	7.5	35	420 x 420 x 525
2	NT 48/1	67	200	72	48	1380	10.5	35	490 x 390 x 780
3	NT 70/3 *	3 x 56	208	79	70	3600	27.6	40	720 x 510 x 975
4	NT 14/1	61	230	70	14	1380	14	35	497 x 467 x 416
5	NT 35/1 Ap	61	230	67	35	1380	9.5	35	520 x 380 x 580
6	NT 65/2 Ap	2 x 74	254	73	65	2760	20	40	600 x 480 x 920
7	NT 65/2 TACT 2	2 x 74	254	73	65	2760	26.5	40	575 x 490 x 880
8	NT 75/2 Ap Me TC	2 x 74	254	73	75	2760	26.5	40	575 x 490 x 880

## Related Accessories:

Machine with cartridge filter

Machine with pleated flat filter



Vacuum Tool Kit



Roller Brush



Fleece filter



Hepa filter



Filter bag

Me : Stainless Steel

Ap : Finger pressed Filter Cleaning

TC : Tilting Container

TACT / TACT 2 : Automatic Filter Cleaning

\* Longer Delivery Time

\*product shown in photograph may vary from the actual



Puzzi 10/1 \*Eu



Puzzi 30/4



BRS 43/500 C



BRC 45/45 C Ep

Sr. No.	Machine Model	Air Flow Rate (l/s)	Vacuum (mbar)	Spray Rate (l/min)	Spray Pressure (bar)	Fresh / Dirty Water (l)	Vacuum (W) / Brush (W)	Area Performance (m2/h)	Working Width (Brush) (mm)	Weight (kg)	Dimension (l x w x h) (mm)
1	Puzzi 8/1 C	61	236	1	2.5	8 / 7	-	12-18	-	9.8	530 x 330 x 440
2	Puzzi 10/1 *Eu	54	220	1	1	10 / 9	-	20-25	-	10.7	710 x 330 x 440
3	Puzzi 10/2 Adv *Eu	54	220	2	2	10 / 9	-	30-45	-	11.5	710 x 330 x 440
4	Puzzi 30/4 *	74	254	3	4	30/15	1200	-	-	26	580 x 460 x 930
5	BRS 43/500 C	-	-	0.38 (ic)	3.4 (ic)	7.5	- / Yes	300 (ic)	430	25	400 x 460 x 1160
6	BRC 45/45 C Ep	45	300	0.7 (ic) / 3.2 (dc)	3.5 (ic) / 7 (dc)	45 / 38	1100 / Yes	350 (dc) / 1000 (ic)	410	48	770 x 545 x 1250
7	BRC 50/70 W Battery Powered *	71	184	0.9 (ic) / 4 (dc)	7 (ic) / 7 (dc)	76 / 61	375 / Yes	450 (dc) / 1250 (ic)	508	290	1400 x 700 x 1100

ic - interim Cleaning / iCapsol  
dc - deep cleaning / spray extraction

### Air Blower



AB 30 Classic



AB 45 Classic



SG 4/4



SGV 8/5

Sr. No.	Machine Model	Air Flow Rate (Levels 1/2/3) m3/min	Fan Speed (rpm)	Cable Length (m)	Power Rating (W)	Weight (kg)	Dimension (l x w x h) (mm)
1	AB 30 Classic	29.3	1350	6.1	520	8.54	405 X 400 X 415
2	AB 45 Classic	44.6	1350	6.1	700	11.87	405 X 475 X 475

### Professional Steam Cleaner

Sr. No.	Machine Model	Voltage (v)	Heating Output (W)	Tank Capacity (l)	Steam Pressure (bar)	Weight (kg)	Dimension (l x w x h) (mm)
1	SG 4/4	230	2300	2.0 / 2.4	4	8	475 x 320 x 275
2	SGV 6/5	220	3000	5	6	45	640 x 495 x 965
3	SGV 8/5	220	3000	5 - 5	8	45	640 x 495 x 965

### Related Accessories:



Hand Tool



Bio Descaler



Trolley



Window Nozzel

\* Longer Delivery Time

\*product shown in photograph may vary from the actual



KM 70/15 C



KM 75/40



KM 100/100 R P



KM 130/300



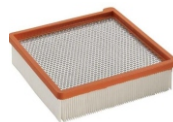
KM 150/500 Classic

Sr. No.	Machine Model	Drive / Drive Power	Max. Area Performance (m <sup>2</sup> / h)	Working Width without/with 1/2 Side Brushes (mm)	Waste Container (ltr)	Working Speed (km / h)	Filter Area (m <sup>2</sup> )	Weight (kg)	Dimension (l x w x h) (mm)
1	KM 70/15 C	Manual	2800	480 / 700 / 960	42	Push	-	25	1300 x 810 x 1040
2	KM 70/20 C	Manual	2800	480 / 700 / 960	42	Push	Dust Filter	23	1300 x 850 x 1050
3	KM 35/5 C	Battery	1480	350	5	Push	-	5.6	400 x 400 x 190
4	KM 75/40 W P	Honda / 3.3 kW	3375	550 / 750 / -	40	4.5	1.8	84	1430 x 780 x 1180
5	KM 75/40 W Bp/Pack	24 v / 400 w	3375	550 / 750 / -	40	4.5	1.8	78 / 124	1430 x 780 x 1180
6	KM 90/60 R P *	Honda / 4.8 kW	9200	615 / 900 / 1150	60	8	4	220	1635 x 980 x 1260
7	KM 90/60 R Bp/Pack *	24 v / 600 w	6900	615 / 900 / 1150	60	6	4	200 / 330	1635 x 980 x 1260
8	KM 100/100 R P	Honda / 6.7 kW	10400	700 / 1000 / 1300	100	8	6	340	2006 x 1005 x 1343
9	KM 100/100 Bp/Pack *	24 v / 750 w	7800	700 / 1000 / 1300	100	6	6	320 / 540	2006 x 1005 x 1343
10	KM 125/130 R *	Yanmar 4.5 kW	10000	1250 / 1700 / 1700	130	8	Triple Tact	920	1800 x 1250 x 1450
11	KM 100/100 RD	Yanmar 4.4 kW	8000	1000 / 1300 / 1300	100	8	6	340	2006 x 1005 x 130
12	KM 130/300 Classic *	Yanmar / 19.3 kW	13000	1000/1300	300	10	5.5	850	2040 x 1330 x 1430
13	KM 150/500 Classic *	Yanmar / 21.6 kW	21000	1200 / 1500	500	14	8	1440	2442 x 1570 x 1640
14	IC 15/240 W *	Honda / 4 kW	-	-	240	6	3.6	220	1840 x 940 x 1600

**Related Accessories:**



Litter Picker



Flat Filter



Light



Canopy

**\* Longer Delivery Time**

*\*product shown in photograph may vary from the actual*



**Mop Vac**



**B 60/10**



Sr. No.	Machine Model	Working Width Brush (mm)	Working Width Vacuum (mm)	Motor Rating / Traction Motor (w)	Fresh / Dirty Water Tank (l)	Max Area Performance (m <sup>2</sup> / h)	Power Supply (v / hz)	Weight (Kg)	Dimension (l x w x h) (mm)
1	B 60/10	-	-	-	10	1500	-	21	1356 x 635 x 1311

**Escalator Cleaner**



**BR 45/10 Esc**



**BR 47/35 Esc**

Sr. No.	Machine Model	Working Width (mm)	Working Width Vacuum (mm)	Fresh / Dirty Water Tank (l)	Rotation Speed (rpm)	Brush Motor Rating (W)	Suction Motor (W)	Water Throughput (l / h)	Pressure (bar)	Weight (kg)	Dimension (l x w x h) (mm)
1	BR 45/10 Esc *	450	450	-	190 / 290	190	1500	-	-	44	800 x 460 x 220
2	BR 47/35 Esc *	470	470	35	870 / 1090	1100	800	60	4 - 7	90	1200 x 670 x 1100

**Single Disc Machines**



**BD 17/5 C**



**BDS 43/180 C IN**



**BDP 43/450 Adv**



**BDP 50/1500 C**

Sr. No.	Machine Model	Working Width (mm)	Working Height (mm)	Power Rating (W)	Brush Contact Pressure (g / cm <sup>2</sup> )	Pad Rotation Speed (rpm)	Power Supply (v / hz)	Working Width Vacuum (mm)	Max. Area Performance (m <sup>2</sup> / h)	Weight (kg)	Dimension (l x w x h) (mm)
1	BDS 43/180 C IN	430	90	1400	-	180	230 / 50	0-	-	42	620 x 450 x 1000
2	BDS 43/180 C Adv	430	90	1400	-	180	230 / 50	-	-	40	660 x 430 x 1180
3	BDP 43/450 Adv	430	90	1400	-	450	230 / 50	-	-	45	660 x 430 x 1180
4	BDP 50/1500 C	508	-	1100	4	1500	230 / 50	560	900	34.5	760 x 560 x 1250
5	BD 17/5 C	170 / 200	330	230	-	0-470	50	-	-	5	360 x 180 x 330

**Related Accessories:**



Pump Spray Bottle



Suction Ring



Diamond Pad



Universal Pad Holder

**\* Longer Delivery Time**

*\*product shown in photograph may vary from the actual*





BR 30/4 C



BD 43/40 Classic EP



BD 50/50 Classic

Sr. No.	Machine Model	Working Width Brush (mm)	Working Width Vacuum (mm)	Motor Rating / Traction Motor (w)	Fresh / Dirty Water Tank (l)	Brush Contact Pressure / Rotation Speed (g/cm <sup>2</sup> / rpm)	Max Area Performance (m <sup>2</sup> / h)	Power Supply (v / hz)	Battery Capacity (v / Ah)	Weight (Kg)	Dimension (l x w x h) (mm)
1	BR 30/4 C	300	300	820	4 / 4	100 / 1450	200	230 / 50	-	11,5	390 x 335 x 1180
2	BR 40/10 C	400	400	1900	10 / 10	100 - 200 / 1100	400	230 / 50	-	30	520 x 470 x 380
3	BD 43/40 Classic EP	430	740	800	40 / 40	- / 235	1720	230 / 50	-	56	1137 x 505 x 1028
4	BD 50/50 Classic EP	500	510	1200	60 / 60	- / 155	2000	230 / 50	-	55 / 117	1185 x 540 x 1000
5	BD 50/50 Classic BP	500	510	1100	52 / 51	- / 155	2000	-	24 / -	55 / 117	1185 x 540 x 1000

**Stand on & Ride-on Scrubber Driers**



B 95 RS Bp Pack



B 90 R Bp



B 150 R Bp



B 250 R Bp



B 300 RI

Sr. No.	Machine Model	Working Width Brush (mm)	Working Width Vacuum (mm)	Motor Rating (W)	Fresh / Dirty Water Tank (l)	Brush Contact Pressure / Rotation Speed (g / cm <sup>2</sup> / rpm)	Max Area Performance (m <sup>2</sup> / h)	Battery Capacity (v / Ah)	Weight (Kg)	Sweeping Container (l)	Dimension (l x w x h) (mm)
1	B 95 RS Bp Pack *	550	850	1800	95 / 95	200-315 / 600-1300	4100	36 / 105	255 / 370	-	1330x690x1285
2	B 90 R Bp / Pack (Roller)	550	850 / 940	2 x 600	90 / 90	200-315 / 600 -1300	4500	24 / 180	149	6 / 7 (Roller)	1450x800x1200
3	B 90 R Bp / Pack (Disc)	650 / 750	850 / 940	2 x 600	90 / 90	20-35 / 180	4500	24 / 180	150	-	1450x800x1200
4	B 150 R Bp / Pack (Roller)	750 / 900	940 / 1060	-	150 / 150	1300	4500 / 5400	24/240 or 400	-	7 / 9 (Roller)	1550x870x1500
5	B 150 R Bp / Pack (Disc)	750 / 900	940 / 1060	-	150 / 150	180	4500 / 5400	24/240 of 400	-	-	1660x790x1400
6	B 250 R Bp / Pack *	1000	1160	5200	250 / 250	260 / 600-1200	6000	36 / 630	500 / 1250	20	1900x1060x1550
7	B 250 D Bp / Pack *	1000	1160	4600	250 / 250	35 / 140	6000	36 / 630	500 / 1250	-	1900x1060x1550
8	B 300 RI *	1045	1755	5200	300 / 300	460 / -	16550	12 / 80	1745	180	2400x1540x1760

**Related Accessories:**



Brush Head



Curved Squeegee



Pad Roller Shaft



Roller Brush



Disc

\* Longer Delivery Time

\*product shown in photograph may vary from the actual

## Contact us for our products & services across India

Call Us : 1800 1234 180 (9AM- 6PM, Mon- Fri) e-mail: [info@karcher.in](mailto:info@karcher.in) [www.kaercher.com/in](http://www.kaercher.com/in)

### Noida (Head Office)

D-120, Sec-63,  
Noida - 201 307,  
Uttar Pradesh  
Ph. : +91 120 7111800  
Fax : +91 120 7111900

### Ahmedabad

12/A, Orchid Mall,  
Nr.Govardhan Party Plot,  
Thaltej,  
Ahmedabad - 380 059,  
Gujarat  
Ph. :+91 79 40031039

### Bengaluru

# 2404, 2nd Cross,  
HAL 3rd Stage,  
Old Airport Road,  
Bengaluru - 560 017,  
Karnataka  
Ph. : +91 80 41113819  
Fax : +91 80 41463901

### Chennai

No. 54,  
Alappakkam Main Road,  
Maduravoyal,  
Chennai - 600 095,  
Tamil Nadu  
Ph. : +91 44 42814230  
Fax : +91 44 42814230

### Cochin

46/561,  
Kottankavu Junction,  
Vennala (PO),  
Ernakulam - 682 028,  
Kerala  
Ph. : +91 484 2808484

### Haryana/Punjab

Plot No. 375,  
Industrial area, Phase-2,  
Near BEL Factory,  
Panchkula - 134 113,  
Haryana  
Ph.: +91 172 5048800

### Indore

R 96, Mahalaxmi Nagar  
Indore - 452 010,  
Madhya Pradesh  
Ph.: +91 881 9900204

### Kolkata

P 40, Sector-A  
Metropolitan Housing  
Co-operative Society,  
Kolkata - 700 105,  
West Bengal  
Tele Fax : +91 33 40638124

### Mumbai

A 206 & B 009,  
Punit Industrial Estate,  
TTC Industrial Area,  
Thane - Belapur Road,  
Turbhe,  
Navi Mumbai - 400 705,  
Maharashtra  
Phone: +91 22 27684716

### Secunderabad

Flat No. 001 , Ground Floor,  
Rehana Manzil,  
Plot No. 12/13,  
Sanjeevaiah Nagar,  
House Building Society,  
Sikh Village,  
Secunderabad - 500 009,  
Telangana  
Ph.: +91 40 40023654  
Fax: +91 40 40023653

### Vadodara

Sitaram Complex  
Shop No.38 &39,  
(Ground Floor),  
Near Channi GEB,  
Channi Road,  
Vadodara - 391 740,  
Gujarat  
Tele Fax : +91 265 3935244

**Registered Office:** Level 4, B-Wing, Statesmen House Building, Barakhamba Road, Connaught Place, New Delhi - 110 001, India  
CIN : U29142DL2011PTC214243

Dealer stamp here: