

# KÄRCHER

makes a difference



**CLEANLINESS IS ALWAYS IN SEASON.**

PROFESSIONAL | HOSPITALITY





## The best-kept hotels in town

Sustainable hygiene management is now a standard practice in the hotel and restaurant business. It improves the wellbeing of guests and reflects the self-image of the business. In addition, professional maintenance extends the service life of the facilities. Cost-conscious managers invest in Kärcher cleaning systems because they are economical in use, intuitive in operation and extraordinarily long-lasting.



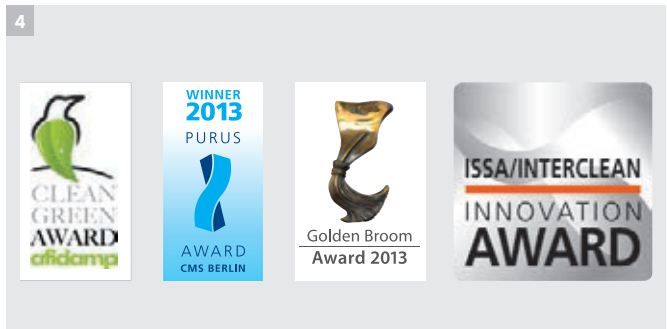
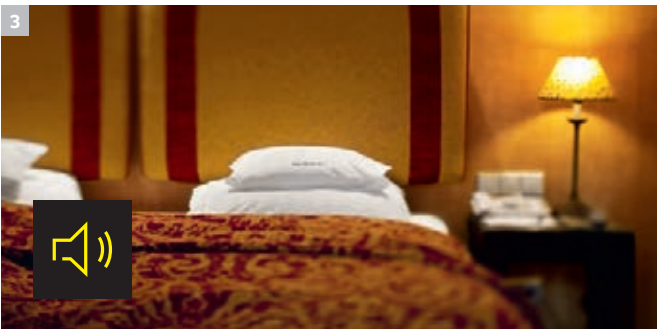
### Table of contents

Driveways and entrances	Page 6
Rooms and bathrooms	Page 8
Wellness areas	Page 10
Kitchens and restaurants	Page 12
Outdoor areas, car parks and underground car parks	Page 14
Product adviser	Page 16
Technical data	Page 18
ecoefficiency	Page 20
Service	Page 22
Company	Page 23

## Welcome your guests with class and style.

The name Kärcher is a synonym for high performance, quality and innovation worldwide. For cleaning expertise that sets standards. For the hotel and hospitality industry, the Kärcher system offers outstanding solutions for all requirements: perfectly balanced machines, accessories and cleaning agents. Top-performing, efficient and economical thanks to innovative technology, low consumption and durability. Inconspicuous and stylish in classic anthracite. Whisper-quiet.





### 1 The highest standard of cleanliness

The Kärcher microfiber roller is a state-of-the-art accessory. Unbeatable on fine stoneware tiles, it achieves exceptionally good results on all smooth or lightly textured floors.

### 2 eco!efficiency – achieve more with less

Efficiency comes in different dimensions. For example: Reduced energy consumption. High-performance internal-combustion engines. Lower cleaning agent consumption. Highly concentrated cleaning agents, to avoid packaging. Environmental design of machines, while minimising components. Effects which can only be achieved through new ideas and innovative technologies and which, above all, require the will and ability to actually carry them out. Kärcher already offers an extensive range of machines and cleaning agents with the eco!efficiency rating.

### 3 Low operating noise

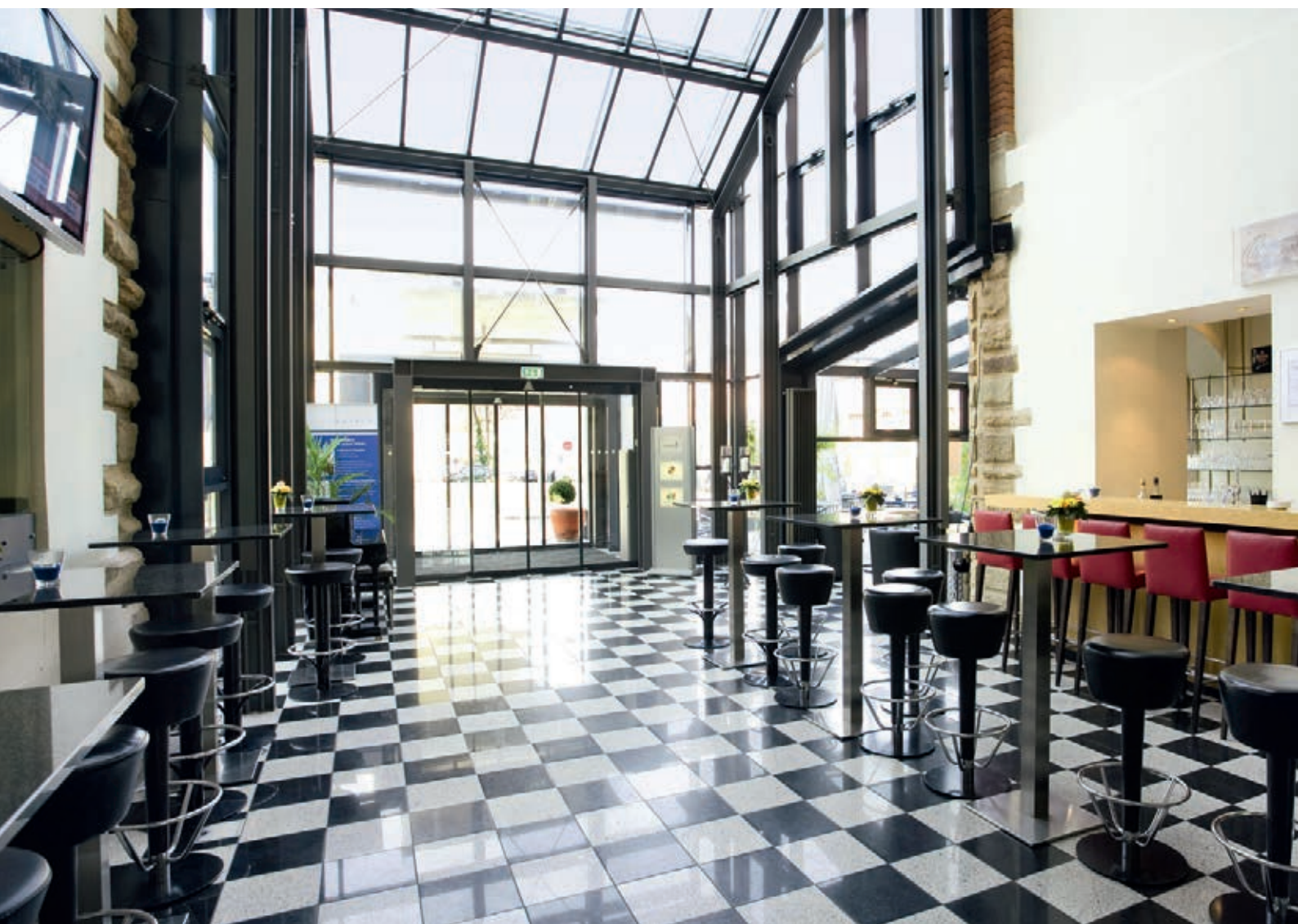
Thanks to soundproofed motors and optimised flow channels, dry vacuum cleaners from the eco!efficiency range are especially suited for use in noise-sensitive areas or during normal business hours.

### 4 Quality you can see and rely on

Kärcher products are synonymous with quality. See the ergonomics. Feel the power. We are constantly working on optimising the combination of technology, design and operating convenience. Numerous awards bear testimony to the perfection of our products. What is most important to us is the positive feedback from our highly satisfied customers.

# Ready to receive guests in style

The first impression counts. This is especially true in the hotel and restaurant business. Cleanliness is the first impression guests have of a hotel. Leading hotels and service providers rely on the world market leader Kärcher for this. From scrubber driers for the foyer to incredibly quiet vacuums for the lobby, Kärcher always has the right cleaning system.



**Professional in every detail**  
Dry vacuums and electric brooms are powerful, compact machines with many practical features.



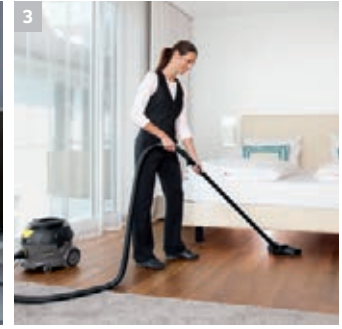
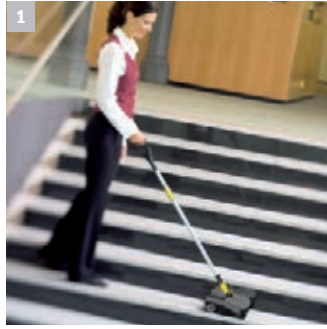
**During business hours**  
Spray extraction machines are designed to clean carpets and upholstery quickly and thoroughly - also during business hours.



**Effortless sweeping**  
Push sweepers are time-savers when it comes to cleaning small and large areas quickly and thoroughly - plus they are easy on your back.



**Discreet, but thorough**  
Step-on scrubber driers only draw attention due to their easy operation and excellent performance.



**1 Retire your broom and dustpan**

The KM 35/5 battery-operated micro sweeper or cordless EB 30/1 Adv Li-Ion electric broom are ideal for spot cleaning entrances and reception areas. They quickly, quietly and easily pick up loose dirt from hard and carpeted floors, are immediately available when you need them and can be set aside inconspicuously just as easily.

**2 Cost effective and technically brilliant**

Scrubber driers make floors hygienically clean and give them a brilliant shine. With its high surface pressure, roller brush technology is advantageous for textured or jointed surfaces. Machines with proven disc technology are suitable for smooth surfaces.

**3 Saving energy has never been so much fun!**

Thanks to an optimised flow system, the T 12/1 ecoefficiency offers the same excellent cleaning performance as the T 12/1 standard version - but with an up to 40% lower power consumption and 5 dB(A) quieter.

**4 Torque conquers dull spots**

Kärcher polishing machines, such as the BDP 43/450 C Adv, generate high torque to produce an especially high-gloss surface. Vacuum extraction of the polishing dust makes the work pleasant and prevents airborne dust formation. This technology also scores top marks for wear and maintenance.

**5 Just spray and vacuum for a clean carpet**

Ideal for heavily soiled carpeting: Spray-extraction cleaners loosen and remove dirt in a single operation. The spray-extraction function of the Puzzi series is ideal for heavy traffic areas which must be quickly restored to dry, accessible condition.

# Only the best is good enough.

Guests come first. And guests want things clean and quiet – always and everywhere. Cleaning systems for indoor areas must therefore have special characteristics: They must be quiet, easy to transport, ergonomically designed, and usable even in small spaces. These characteristics also make these machines easier to use and more pleasant for the user.



## Endless steam

Kärcher steam cleaner with two-tank system for continuous operation without a cool-down break.



## Top-class maintenance

Whisper-quiet dry vacuum cleaners such as the T 15/1 and T 12/1 ecoefficiency for daily maintenance cleaning.



## Clean large areas thoroughly

Dual-motor upright vacuum cleaners with generous working widths clean even large areas in almost no time.



## For carpeted areas up to XXL

Automatic carpet cleaners for thorough, deep carpet cleaning or interim cleaning with encapsulation technology.





#### 1 Tip-top carpet appearance

Upright vacuum cleaners such as the CV 38/2 combine suction with the power of an electrically driven brush. The effect: The pile is raised to allow the vacuum to remove dirt from deep within the pile. The indicator lamp shows the user when the roller brush setting needs to be adjusted to obtain the best cleaning results.

#### 2 Because less is more – everything is as it should be

The T 12/1 ecoefficiency vacuum cleaner can be operated with or without filter bag. It features a versatile and highly efficient filter system. After all, cleanliness matters, but so does hygiene. And the antistatic Irgastat bend ensures full suction power for effortless vacuuming.

#### 3 Suction tube with extra long hose

The brush vacuum for all surfaces – the CV 60/2 RS is a true all-rounder, as it automatically adjusts itself to every floor covering. From hard floors to carpet and vice versa – no manual adjustments are required. The stand-on vacuum is easy to use and extremely manoeuvrable. With contra-rotating roller brushes, side brushes, suction tube and optional HEPA filter. The on-board practical accessory kit for cleaning hard-to-reach areas, as well as other accessories and charger are easy to reach at all times.

#### 4 The classic solution for edges and corners

This telescopic manual vacuum tube reaches places the brush can not reach. Overhead cleaning is made easy thanks to the flexible suction hose.

#### 5 Take large areas in stride

Automatic carpet cleaners in the BRC series combine spray extraction with the mechanical action of roller brushes. With the matching detergents they are ideal for interim cleaning and deep cleaning of large areas.

#### 6 The upholstery master

Puzzi spray-extraction cleaners excel in upholstery cleaning with unbeatable extraction performance for extremely short drying times.

#### 7 Remove lime and dirt without chemicals

Steam cleaners loosen stubborn lime and dirt in bathrooms without cleaning agents, and their ingenious two-tank system eliminates waiting times for water heating. The VapoHydro function allows for the spray jet to be adjusted continuously from hot water to steam.

#### 8 Tackle difficult vacuuming jobs

With its ergonomic strap system, the BV 5/1 backpack vacuum can be carried comfortably on the user's back – ideal for cleaning, e.g. staircases or between narrow rows of seats. Also available as a battery-operated vacuum for even greater flexibility.

# Pure relaxation

Cleanliness and hygiene have top priority in swimming pool and sauna areas. Without compromise. Kärcher cleaning systems are ideal for cleaning in wellness areas to remove coarse and fine dirt, dissolve limescale and to disinfect. Areas are left not only looking clean, but also being properly hygienic.



## Big in small places

Compact scrubber driers deliver top performances in small places – in spas as well as fitness rooms.



## Hygiene with high pressure

High-pressure cleaners and surface cleaners, with or without suction, do not give germs a chance.



## At the source

Kärcher WPD series water dispensers provide water of an incomparable natural quality.



## The 2-in-1 solution

The AP 100/50 M: a combination of high-pressure cleaner and wet and dry vacuum cleaner.



#### 1 Quick and clean

The compact BR 30/4 C scrubber drier is the first choice for maintaining floor hygiene in sensitive areas, e.g. barefoot areas. Spray, brush and vacuum in one pass, or separately. Fast and spotless.

#### 2 A multitalent for floors

The BR 40/10 C scrubber drier combines many features in a single unit: It scrubs like a single-disc machine, picks up cleaning solution like a wet vacuum, and polishes like a high-speed machine. Thanks to the positioning of its two suction bars, it can vacuum especially close to the edge. In addition, the squeegees pick up cleaning solution in both directions of travel - forwards and backwards.

#### 3 Environmentally friendly hygiene

Steam cleaners provide impeccable hygiene in saunas without using any cleaning agents. A plus for people and the environment (further information on page 13).

#### 4 The multi-talent for mobile use

The AP 100/50 M is a simple and versatile all-in-one solution - suitable for different surfaces. The cleaning fluid can be sprayed on and vacuumed away.

#### 5 Best against thirst

Body fluid lost in perspiration needs to be replaced quickly, preferably with pure water. And preferably right on site. The Kärcher WPD 100 water dispenser provides a constant supply of cold or hot, natural or sparkling water of the purest quality.

#### 6 Unbeatable cleaning performance

Surface cleaners such as the FR 30 ME deliver ten times more area cleaning performance - indispensable efficiency for cleaning large wellness areas hygienically.

#### 7 Forewarned is forearmed

The NT 70/2 wet and dry vacuum cleaner quickly removes water from floors to avoid a slipping hazard and effectively removes dirt. This powerful vacuum cleaner also removes coarse dirt.

#### 8 Dead zone for bacteria

The Kärcher Inno-Foam kit is a foam system for cleaning and disinfection with a high-pressure cleaner. The disinfecting foam has an especially long adhesion time, which enhances its effectiveness. The dual spray lance is remarkably easy to use, changing between the foam nozzle and the high-pressure nozzle with a flick of the wrist.

# Cleaning according to the house rules

The kitchen is vitally important for the reputation of a restaurant. For official reasons as well, there is no room for doubt that kitchen and restaurant hygiene is the top priority. The Kärcher system offers all the machines, accessories and cleaning agents necessary to maintain stainless steel and other surfaces, ovens and floors in appetizingly clean condition.



## Crumb alert

Handy battery-operated cleaners such as cordless brooms and sweepers effortlessly remove loose dirt.



## Powerful and independent

Battery-operated scrubber driers are mains-independent, immediately ready to use and manoeuvrable. Also available for mains operation.



## Versatile all-rounder

Compact mobile scrubbers such as the BR 40/1000 C for basic and maintenance cleaning of all hard surfaces are ideal for use in small kitchens.



## High pressure in the kitchen

Special high-pressure cleaners with components approved for use with foodstuffs deliver uncompromising hygiene.



### 1 Cordless wet cleaning

The BR 30/4 C Bp cleans up minor messes in no time. With cordless power instead of an annoying cable. There is no risk of tripping or getting caught somewhere. Nevertheless, this scrubber drier has enough endurance for thorough cleaning.

### 2 Even the machine is hygienic

The HD 7/10 CXF high-pressure cleaner is specifically designed for commercial kitchens. It has a food-grade high-pressure hose and abrasion-resistant grey wheels that leave no tracks. Together with the FR 30 ME surface cleaner, it is simply indispensable in a top-rank restaurant.

### 3 For tough jobs

The NT 65/2 Ap is a high-performance, twin motor wet and dry vacuum for professional use. The flat pleated filter is efficiently cleaned by blasts of air for virtually constant suction power.

### 4 The lowest profile in its class

The BRS 40/1000 C scrubber is an all-round machine for all hard surfaces. Thanks to its extremely low-profile construction, it can also reach under shelves – an important factor for kitchen hygiene.

### 5 Putting on the pressure

It takes the concentrated force of a hot-water jet or steam jet to remove stubborn baked-on dirt. Tackle the job with Kärcher accessories for steam cleaners, including the detail nozzle, brass bristle brushes, and a cleaning cloth set. Kärcher SGV\* and SG 4/4\*\* steam cleaners kill 99,999% bacteria without chemicals.

\* Accordant to prEN 16615, PVC floor, machine: SGV (floor nozzle with slats, 30 cm/sec., max. steam pressure, min. VapoHydro) Test-germ: Enterococcus hirae ATCC 10541

\*\* Accordant to prEN 16615, PVC floor, machine: SG 4/4 (floor nozzle, 30 cm/sec., 1. steam, 2. steam vacuum, level 3) Test-germ: Enterococcus hirae ATCC 10541

## Outdoor facilities – your calling card at the entrance

The anticipatory pleasure of a good meal or a wellness weekend reaches its climax immediately before the entrance. This expectation can be further enhanced by a well maintained outdoor area. This advantage should be exploited to the full – in the car park as well as the forecourt area, and in the underground car park, walkways and pool area. You can do this systematically with the Kärcher system: perfectly coordinated machines, accessories and cleaning agents.



### Absolutely indispensable

High-pressure cleaners are indispensable in many areas, including façade cleaning, vehicle maintenance and floor or surface cleaning.



### Swift brooms

Compact push and walk behind sweepers complete sweeping tasks in a fraction of the usual time and are considerably more cost effective than a normal broom.



### Broad areas

Ride-on sweepers are the solution for large-area sweeping tasks – on car parks as well as golf course paths.



### Ready for big jobs

Ride-on scrubber driers for extremely severe conditions and long working hours. Your first choice for underground and above-ground car parks, as well as loading areas.



**1 Progress made easy**

Kärcher compact ride-on sweepers combine superior ease of use with high area performance and effective automatic filter cleaning. The adjustable seat position, tilting steering wheel and oversized wheels underline their aim to fulfil contemporary expectations for ease of use.

**2 Can we make that easier?**

The compact and extremely manoeuvrable KM 75/40 W makes child's play of thorough cleaning of small to medium-sized surfaces. Traction drive replaces brute strength, while effective vacuuming delivers cleanliness without a cloud of dust. Available with a choice of a powerful petrol engine or an especially quiet battery-powered version also for indoor use, with an antistatic carpet sweeping kit available as an option.

**3 High-pressure surface cleaning**

The FR 30 surface cleaner masterfully transforms the power of a Kärcher high-pressure cleaner into surface cleaning performance. The version with a plastic housing is especially easy to use, both outdoors and indoors.


**4 Right on track**

With their large surfaces, coarse and stubborn dirt and steep ramps, multi-level car parks often impose special demands on scrubber driers. The Kärcher B 150 R is ideally suited for the task, with its robust steel frame for use under severe conditions on surfaces with slopes up to 15%. The large water tank and powerful battery enable for long periods of continuous operation.

**5 High frequency cleaning made easy**

The innovative cordless KM 35/5 C is a fast, effective and comfortable alternative to conventional sweeping. Thanks to the cleverly placed roller brush, it delivers impressive performance right to the edge. A powerful lithium-ion battery eliminates the need for an annoying cable. The foot-operated power switch is especially convenient.

# Find what you need at a glance

Application	Cleaner	Vacuum	Spray-extraction cleaners / Carpet cleaners	Steam cleaners
<b>Forecourt, entrance and corridor area</b> 	 <p><b>Machines</b>            T 10/1 versions            T 12/1 versions            T 15/1 versions            CV 38/2 Adv            CV 48/2 Adv            CV 66/2 Adv            CV 60/2 RS Bp            BV 5/1            EB 30/1 Adv Li-Ion</p>	 <p><b>Machines</b>            Puzzi 8/1   10/2   30/4,            BRS 43/500 C,            BRC 30/15 C, BRC 45/45 C  <b>Accessories</b>            PW 30/1 professional power brush for Puzzi, Puzzi hand tool for cleaning upholstery  <b>Cleaning agents</b>            CarpetPro range: RM 760 Powder or Tabs, RM 764, RM 767, RM 768/OA (iCapsol), RM 769, RM 763, RM 762, RM 770</p>	 <p><b>Machines</b>            SGV 8/5</p>	
<b>Rooms and bathrooms</b> 	<p><b>Machines</b>            NT 27/1 Adv            NT 35/1 Ap            T 7/1 versions            T 10/1 versions            T 12/1 versions            T 15/1 versions            CV 38/2 Adv            CV 48/2 Adv</p>	<p><b>Machines</b>            Puzzi 8/1   10/1   10/2,            BRS 43/500 C, BRC 30/15 C  <b>Accessories</b>            PW 30/1 professional power brush for Puzzi, Puzzi hand tool for cleaning upholstery  <b>Cleaning agents</b>            CarpetPro range: RM 760 Powder or Tabs, RM 764, RM 767, RM 768/OA (iCapsol), RM 769, RM 763, RM 762, RM 770</p>	<p><b>Machines</b>            SGV 4/4</p>	
<b>Sauna, wellness and fitness area</b> 	<p><b>Machines</b>            NT 27/1 versions            NT 35/1 Ap            NT 48/1            NT 70/2 Adv</p>		<p><b>Machines</b>            SGV 8/5            SGV 4/4</p>	
<b>Kitchen, restaurant and dining areas</b> 	<p><b>Machines</b>            NT 27/1 versions            NT 35/1 Ap            NT 70/2 Adv            T 12/1 ecoefficiency            T 15/1 versions            CV 38/2 Adv            EB 30/1 Adv Li-Ion</p>	<p><b>Machines</b>            Puzzi 8/1   10/2   30/4,            BRS 43/500 C,            BRC 30/15 C, BRC 45/45 C  <b>Accessories</b>            PW 30/1 professional power brush for Puzzi, Puzzi hand tool for cleaning upholstery  <b>Cleaning agents</b>            CarpetPro range: RM 760 Powder or Tabs, RM 764, RM 767, RM 768/OA (iCapsol), RM 769, RM 763, RM 762, RM 770</p>	<p><b>Machines</b>            SGV 8/5            SGV 4/4</p>	
<b>Outdoor areas, car parks and underground car parks</b> 	<p><b>Machines</b>            NT 70/2 Adv</p>	<p><b>Machines</b>            Puzzi 8/1  <b>Cleaning agents</b>            CarpetPro RM 760 Tabs,            RM 769, RM 770</p>		



<p>Scrubbers, scrubber driers and single-disc machines</p> 	<p>High-pressure cleaners</p> 	<p>Sweepers</p> 	<p>Special products</p> 	<p>Cleaning agents for manual cleaning</p> 
<p><b>Machines</b> BD 17/5 C (stairs, ledges), BR 30/4 C Ep/Bp, BR 35/12 C, BD 38/12 C, BR 40/10 C Adv, BR/BD 40/25 C Ep/Bp/Pack, B 40, BDS 43/180 C Adv, BDS 43/Duo C Adv, BDP 43/450 C Adv, BDP 50/1500 C <b>Cleaning agents</b> RM 69, RM 730, RM 743, RM 748, RM 753, RM 755, RM 776, RM 780</p>	<p><b>Machines</b> HD 6/13 versions HD 6/15 versions HDS 5 U versions <b>Accessories</b> FR 30/ME (surface cleaner) FRV/ME (surface cleaner with suction) <b>Cleaning agents</b> RM 25, RM 59, RM 732, RM 734, RM 735</p>	<p><b>Machines</b> KM 35/5 C KM 70/20 C, 1 or 2 SB KM 70/30 C Bp/Bp Pack Adv KM 75/40 W Bp Pack <b>Accessories</b> Carpet sweeping kit</p>	<p><b>Machines</b> Escalator cleaners: BR 45/10 Esc BR 47/35 Esc ECO! Spray mop system Manual cleaning equipment</p>	<p>CA 30 C / R CA 40 R CA 50 C</p>
<p><b>Machines</b> BR 30/4 C Ep/Bp BR 35/12 C <b>Cleaning agents</b> RM 69, RM 730, RM 743, RM 753, RM 755, RM 780</p>			<p><b>Machines</b> ECO!Clean-Liner system trolley ECO! Spray mop system Manual cleaning equipment</p>	<p>CA 10 C / Extra CA 20 C / R CA 30 C / R CA 40 R CA 50 C</p>
<p><b>Machines</b> BR 30/4 C Ep/Bp BR 35/12 C BD 38/12 C BR 40/10 C Adv BR/BD 40/25 C Ep/Bp/Pack <b>Cleaning agents</b> RM 69, RM 753, RM 780</p>	<p><b>Machines</b> HD 6/13 versions HD 6/15 versions HDS 5 U versions <b>Accessories</b> FR 30/ME (surface cleaner) FRV/ME (surface cleaner with suction) Inno-Foam kit <b>Cleaning agents</b> RM 25, RM 59, RM 732, RM 734, RM 735</p>	<p><b>Machines</b> KM 35/5 C <b>Accessories</b> Anti-static brush</p>	<p><b>Machines</b> WPD 100 water dispenser ECO! Spray mop system Manual cleaning equipment AP 50/100 M</p>	<p>CA 10 C / Extra CA 20 C / R CA 30 C / R CA 40 R CA 50 C</p>
<p><b>Machines</b> BR 30/4 C Ep/Bp BR 35/12 C Bd 38/12 C BR 40/10 C Adv BRS 40/1000 C <b>Cleaning agents</b> RM 69, RM 731, RM 753</p>	<p><b>Machines</b> HD 7/10 CXF HDS-E 8/16-4 M <b>Accessories</b> FR 30/ME (surface cleaner) FRV (surface cleaner with suction) Inno-Foam kit <b>Cleaning agents</b> RM 31, RM 57, RM 58, RM 59, RM 81, RM 731</p>	<p><b>Machines</b> KM 35/5 C KM 75/40 W Bp Pack <b>Accessories</b> Carpet sweeping kit</p>	<p><b>Machines</b> ECO! Spray mop system Manual cleaning equipment</p>	<p>CA 30 C / R CA 40 R CA 50 C</p>
<p><b>Machines</b> B 40 versions B 60 versions B 80 versions B 90 versions B 95 versions <b>Cleaning agents</b> RM 69, RM 750</p>	<p><b>Machines</b> HD 6/15 CX Plus HD 9/20-4 M HD 10/23-4 S HDS 5/15 UX HDS 6/14 versions HDS-E 8/16-4 M <b>Accessories</b> FR 30, FR 30 ME, FRV/ME</p>	<p><b>Machines</b> KM 70/20 C/2 SB KM 70/30 C Bp/Bp Pack Adv KM 75/40 W Bp Pack KM 85/50 W P/P Adv/Bp Pack KM 90/60 R P/Bp Pack KM 100/100 R versions KM 120/150 R versions</p>	<p><b>Machines</b> MC 50 (for large facilities)</p>	

# Technical data at a glance

## HOT WATER HIGH-PRESSURE CLEANERS

	Current type (phases)	Connection output (kW)	Flow rate (l/h)	Working pressure (bar /MPa)	Max. temperature (°C)
<b>HDS compact class</b>					
HDS 6/14-4 C   CX	1	3.6	240-560	30-140/3-14	80/155
HDS 6/14 C   CX	1	3.6	240-560	30-140/3-14	80/155
<b>HDS upright class</b>					
HDS 5/15 U   UX	1	2.7	450	150/15	80
HDS 5/13 U   UX	1	2.6	500	125/12.5	80
HDS 5/11 U   UX	1	2.2	450	110/11	80
<b>HDS special class</b>					
HDS-E 8/16-4 M 36 kW	3	41.5	300-760	30-160/3-16	58/85
HDS-E 8/16-4 M 24 kW	3	29.5	300-760	30-160/3-16	45/85
HDS-E 8/16-4 M 12 kW	3	17.5	300-760	30-160/3-16	30/85

## COLD WATER HIGH-PRESSURE CLEANERS

	Current type (phases)	Connection output (kW)	Flow rate (l/h)	Max. pressure (bar /MPa)	Working pressure (bar /MPa)
<b>HD middle class</b>					
HD 9/20-4 M	3	7	460-900	220/22	40-200/4-20
<b>HD compact class</b>					
HD 6/15 C   C Plus   CX Plus	1	3.1	230-560	190/19	30-150/3-15
HD 6/13 C   C Plus   CX Plus	1	2.9	560	190/19	130/13
<b>HD special class</b>					
HD 7/10 CXF	3	4.5	250-700	120/12	10-100/1-10

## CARPET CLEANING MACHINES

	Max. area performance (m²/h)	Air flow rate (l/s)	Turbine/pump power (W)	Tank fresh/dirty water (l)
<b>Spray extraction machines and professional power brushes</b>				
Puzzi 30/4   E	60-75	74	1200/70	30/15
Puzzi 10/2 Adv	30-45	54	1250/80	10/9
Puzzi 10/1	20-25	54	1250/40	10/9
Puzzi 8/1 C	12-18	61	1200/40	8/7
PW 30/1 für Puzzi 10/2 Adv	40-55	-	-	-
PW 30/1 für Puzzi 30/4   E	70-110	-	-	-
	Area performance basic/intermediate cleaning iCapsol (m²/h)	Turbine/brush motor power (W)	Working width brush/vacuum (mm)	Tank fresh/dirty water (l)
<b>Deep carpet cleaning machines</b>				
BRC 45/45 C	350/1000	1100/600	410/450	45/38
BRC 30/15 C	150/-	1130/80	270/315	15/17
BRS 43/500 C	-/300	-/370	430/-	7.5/-

## WET AND DRY VACUUM CLEANERS

	Air flow rate (l/s)	Vacuum (mbar/kPa)	Max. power rating (W)	Operating noise level (dB(A))
<b>Ap class</b>				
NT 35/1 Ap	74	254/25.4	1380	70
<b>Standard class</b>				
NT 70/2 Adv	2 × 56	208/20.8	2400	75
NT 48/1	67	200/20	1380	72
NT 27/1 Me   Adv	67	200/20	1380	72
NT 27/1   Adv	67	200/20	1380	72

## DRY VACUUM CLEANERS

	Air flow rate (l/s)	Vacuum (mbar/kPa)	Nominal power input (W)	Operating noise level (dB(A))
<b>Dry vacuum cleaners</b>				
T 15/1 ecoefficiency	43	230/23	750	57
T 15/1 + ESB 34	61	244/24.4	1300	64
T 15/1 HEPA + ESB 28	61	244/24.4	1180	63
T 15/1 HEPA	61	244/24.4	1150	60
T 15/1	61	244/24.4	1150	60
T 12/1 ecoefficiency	43	230/23	750	65
T 12/1	61	244/24.4	1150	65
T 10/1 ecoefficiency	55	210/21	750	54
T 10/1 Adv	61	244/24.4	1100	62
T 10/1	61	244/24.4	1100	62
BV 5/1	61	244/24.4	1150	64
T 7/1 ecoefficiency	55	210/21	750	54
T 7/1	54	245/24.5	1050	62
T 7/1 Classic	■ 40	230/23	1000	63
BV 5/1	61	244/24.4	1150	64
<b>Cordless vacuum cleaners</b>				
BV 5/1 Bp	61	244/24.4/123/12.3	1150	64/58
<b>EB machines</b>				
EB 30/1 Li-Ion   Adv Li-Ion	-	-	-	56
<b>Brush vacuum cleaners for carpets</b>				
CV 66/2	2 × 52	143/14.3	1650	73
CV 60/2 RS Bp Pack	34	117/11.7	1224	68
CV 60/2 RS	34	117/11.7	1224	68
CV 48/2 Adv	48	250/25	1050	67
CV 38/2 Adv	48	250/25	1050	67

## STEAM CLEANERS / STEAM VACUUM CLEANERS

	Voltage (V)	Heating output (W)	Tank capacity (l)	Steam pressure (bar)
<b>Steam cleaner/steam vacuum cleaner</b>				
SGV 8/5	220-240	3000	5	8
SG 4/4	■ 220-240	2300	4	4

## SCRUBBERS / SCRUBBER DRIERS

	Working width brushes / suction (mm)	Theoretical area performance (m <sup>2</sup> /h)	Practical area performance (m <sup>2</sup> /h)	Tank fresh/dirty water (l)
<b>Ride-on scrubber driers</b>				
B 90 R configured	550-750 / 850/940	3300-4500	2475-3375	90/90
B 90 R Adv Dose Bp   Pack	550-750 / 850/940	3300-4500	2475-3375	90/90
B 90 R Adv Bp   Pack	550-750 / 850/940	3300-4500	2475-3375	90/90
B 90 R Classic Bp   Pack	550-750 / 850/940	3300-4500	2475-3375	90/90
<b>Step-on scrubber driers</b>				
B 95 RS	650/750 / 940	2600-3000	1950-2250	95/95
<b>Walk-behind scrubber driers</b>				
B 80 W Bp   Classic	650/750 / 850/940	2200-3000	1950-2250	80/80
B 60 C Bp Classic	510/550 / 850	2040-2200	1530-1650	60/60
B 60 W Bp   Classic	550/650 / 850/940	2200-2600	1650-1950	60/60
B 60 W Ep	510/550 / 850	2040-2200	1530-1650	60/60
B 40 W Bp	430-550 / 850	1700-2200	1275-1650	40/40
B 40 C Bp   Classic	430-550 / 850	1700-2200	1275-1650	40/40
B 40 C Ep	430-550 / 850	1700-2200	1275-1650	40/40
<b>Compact scrubber driers</b>				
BD 40/25 C Bp   Pack	400 / 770	1600	1100	25/25
BR 40/25 C Ep	400 / 770	1600	1100	25/25
BD 40/25 C Ep	400 / 770	1600	1100	25/25
BR 40/25 C Bp   Bp Pack	400 / 770	1600	1100	25/25
BD 40/25 C Eco Bp   Bp Pack	400 / 770	1600	1100	25/25
BD 40/25 C Eco Ep	400 / 770	1600	1100	25/25
BR 40/25 C Eco Bp Pack	400 / 770	1600	1100	25/25
BR 40/25 C Eco Ep	400 / 770	1600	1100	25/25
BR 40/10 C I Adv	400 / 400	400	300	10/10
BR 40/10 C Adv	400 / 400	400	300	10/10
BD 38/12 C Bp Pack	380 / 480	1500	1050	12/12
BR 35/12 C Bp Pack	350 / 450	1400	1050	12/12
BR 30/4 C Bp Pack	300 / 300	200	130	4/4
BR 30/4 C Adv	300 / 300	200	130	4/4
BR 30/4 C   MF	300 / 300	200	130	4/4
<b>Scrubber</b>				
BRS 40/1000 C	400 / -	450	-	10
<b>Single disc machines</b>				
BDS 43/180 C Adv	430 / -	-	-	10
BDS 43/Duo C Adv	430 / -	-	-	10
BDP 43/450 C Adv	430 / -	-	-	-
<b>Stair/escalator cleaners</b>				
BR 47/35 Esc	470 / 470	-	-	35 / 35
BR 45/10 Esc	450 / 450	-	-	-
BD 17/5 C	170/200 / -	-	-	-
<b>Polishing machines</b>				
BDP 50/1500 C	508 / 560	900	-	-

## DRINKING WATER

	Water amount ambient (l/h)	Water amount chilled (l/h)	Water amount hot (l/h)	Water amount sparkling (l/h)
<b>Water dispenser</b>				
WPD 100 Adv   Basic	120	20	10   -	20

## MANUAL CLEANING EQUIPMENT

ECO!Clean Liner Press Trolley	With double bucket, mop press, bin liner holder, drawer compartments
ECO!Clean-Liner Trolley	Wet cleaning system with bin liner holder, drawer compartments
ECO!First-Liner Trolley	For efficient cleaning of all surfaces with bin liner holder
Double bucket trolley	With 2 colour-coded 15 litre buckets and mop press
ECO!Spray mop system	With 0.66 litre tank, mop holder and telescopic handle
Microfibre clothes, 40×40 cm	Ideal for heavily soiled surfaces, red, blue or yellow

## SWEEPERS / VACUUM SWEEPERS

	Working width without / with 1 / with 2 / with 3 side brushes (mm)	Waste container (l)	Max. area performance with 1 / 2 side brushes (m <sup>2</sup> /h)	Indoor use	Outdoor use
<b>Ride-on vacuum sweepers</b>					
KM 120/150 R Bp Pack 2SB	850/1200/1450/-	150	-/8700	■	■
KM 120/150 R Bp Pack	850/1200/-/-	150	7200/8700	■	■
KM 120/150 R Bp 2SB	850/1200/1450/-	150	-/8700	■	■
KM 120/150 R Bp	850/1200/1450/-	150	7200/8700	■	■
KM 120/150 R D 2SB	850/1200/1450/-	150	-/11600	-	■
KM 120/150 R D	850/1200/-/-	150	9600/11600	-	■
KM 120/150 R Lpg 2SB	850/1200/1450/-	150	-/11600	■	■
KM 120/150 R Lpg	850/1200/-/-	150	9600/11600	■	■
KM 120/150 R G 2SB	850/1200/1450/-	150	-/11600	-	■
KM 120/150 R G	850/1200/-/-	150	9600/11600	-	■
KM 100/100 R D	700/1000/1300/-	100	8000/10400	-	■
KM 100/100 R Lpg	700/1000/1300/-	100	8000/10400	■	■
KM 100/100 R G	700/1000/1300/-	100	8000/10400	-	■
KM 100/100 R Bp Pack	700/1000/1300/-	100	6000/7800	■	■
KM 100/100 R Bp	700/1000/1300/-	100	6000/7800	■	■
KM 90/60 R G Adv Edition	615/900/1150/-	60	7200/9200	-	■
KM 90/60 R G Adv	615/900/1150/-	60	7200/9200	-	■
KM 90/60 R Lpg Adv	615/900/1150/-	60	7200/9200	■	■
KM 90/60 R G	615/900/1150/-	60	7200/9200	-	■
KM 90/60 R Bp Pack Adv Edition	615/900/1150/-	60	5400/6900	■	■
KM 90/60 R Bp Pack Adv	615/900/1150/-	60	5400/6900	■	■
KM 90/60 R Bp Adv	615/900/1150/-	60	5400/6900	■	■
<b>Walk-behind sweepers/vacuum sweepers</b>					
KM 85/50 W Bp Pack Adv	610/850/1050/-	50	3825/4725	■	■
KM 85/50 W Bp Pack	610/850/1050/-	50	3825/4725	■	■
KM 85/50 W Bp Adv	610/850/1050/-	50	3825/4725	■	■
KM 85/50 W Bp	610/850/1050/-	50	3825/4725	■	■
KM 85/50 W G Adv	610/850/1050/-	50	3825/4725	-	■
KM 85/50 W G	610/850/1050/-	50	3825/4725	-	■
KM 75/40 W Bp Pack	550/750/-/-	40	3375/-	■	■
KM 70/30 C Bp Pack Adv	480/700/-/-	42	2800/-	■	■
KM 70/30 C Bp Pack	480/700/-/-	42	2800/-	■	■
KM 70/30 C Bp Adv	480/700/-/-	42	2800/-	■	■
KM 70/30 C Bp	480/700/-/-	42	2800/-	■	■
KM 70/20 C 2SB	480/700/920/-	42	-/3680	■	■
KM 70/20 C	480/700/-/-	42	2800/-	■	■
KM 35/5 C	350/-/-/-	5	1480/-	■	■

## VACUUM SWEEPERS

	Working width (mm)	Sweeping container (l)	Max. area performance (m <sup>2</sup> /h)	Year-round use	Air conditioning
<b>Vacuum sweepers</b>					
MC 50 Adv Comfort	900-1400	500	14000	■	■
MC 50 Adv	900-1400	500	14000	■	-

## MULTI-PURPOSE CLEANING MACHINE

	Tank volume fresh/dirty water (l)	Low pressure (bar)	High pressure (bar)	Flow rate (l/min)	Motor rating suction motor / pump (W)
<b>Multi-purpose cleaning machine</b>					
AP 100/50 M	100/70	6	19/50 max.	5	1800/370

■ NEW ■ Included in delivery □ Optional

# eco!efficiency: achieve more with efficiency.

If you want to move and change things, you have to lead the way and show your true colours. The blue symbols representing the various building blocks of Kärcher eco!efficiency show at a glance how and where Kärcher's power of innovation achieves measurably greater and better efficiency for customers, products and the environment. Kärcher eco!efficiency is implemented in all business areas and is an integral part of corporate policies and actions.



## Measurable time saving

The simple equation, time = money, is still valid, but is multiplied by the efficiency factor. More efficient machines allowing work to be carried out more quickly lead to significant labour cost savings and genuine competitive advantages.



## High recyclability

Raw materials that cannot be avoided at the outset must be recyclable as far as possible after a long machine life. Kärcher machines are currently more than 90% recyclable.



## Reduced water consumption

Drinking water is precious and conserving it protects natural resources and saves energy in processing, transport and disposal. Many Kärcher high-pressure cleaners and scrubber driers already meet the eco!efficiency standard or feature an eco!efficiency mode, which efficiently regulates the amount of water depending on the cleaning task.



## Less noise

Noise is not just unpleasant, it has been shown to be damaging to health over the long term. Kärcher tackles working noise both in its own production processes and for users, on the one hand through constructive noise damping and on the other by reducing power to an optimum level. An example of this is the T 12/1 eco!efficiency dry vacuum cleaner. Its working noise level has been reduced by 5 dB(A) compared to the basic model, making it over 50% quieter. Furthermore, the low frequency of its operating noise is subjectively perceived as being very pleasant. As a result, the T 12/1 eco!efficiency is also outstandingly suitable for longer work intervals and noisesensitive areas.



## Intelligent energy efficiency

Everything has its limits. Sometimes more power no longer makes sense. The T 12/1 eco!efficiency dry vacuum cleaner proves that less can be more. Its 750 W motor uses 40% less electricity but, thanks to flow-optimised suction channels, achieves 98% of the cleaning performance of the basic unit, which is more than sufficient for maintenance cleaning.



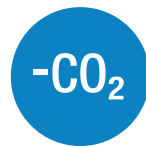
## Exemplary reparability

As early as the development phase, Kärcher machines are designed for reparability: as few components and assemblies as possible, the best possible accessibility and as many standard parts as possible, e.g. standardisation of screws.



## Materials to suit the job

The selection of the best materials for a particular case is a never-ending challenge. New materials and production processes open up new opportunities in manufacturing and the use of machines, accessories and consumables. Lightweight design, durability, avoidance of harmful substances, recyclability and costs – these are factors from which Kärcher regularly re-calculates formulae for efficiency and eco-friendliness.



## Reduced CO<sub>2</sub> emissions

Reducing CO<sub>2</sub> greenhouse gas emissions is a global objective. To reduce its CO<sub>2</sub> footprint, Kärcher is making its contribution on all levels of production and in all business areas: through optimised use of materials, energy and water, high recyclability, as well as self-generated renewable energy.



**Optimised company processes**

Kärcher ecoefficiency simply means continuously trimming all processes in the company to achieve maximum efficiency. This results in constant optimisation in all areas.



**Less waste water pollution**

It is as easy as it sounds: water that has not been used does not need to be disposed of. At the same time, dirty water should be concentrated in order to make work easier for sewage treatment plants. The Kärcher system, consisting of the device, accessories and cleaning agents is fine-tuned to achieve maximum effect with minimum effort.



**Extended service life**

A robust construction style and high strength are key prerequisites for a long usage period. High quality, reparability and a long-term spare parts supply ensure that Kärcher Professional devices give years of reliable service.



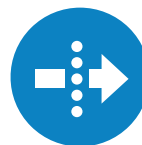
**Correctly dosed cleaning agents**

The most environmentally friendly and economical cleaning agent is that which is not used. Kärcher DOSE technology enables exact dosing of cleaning agents and, as a result, achieves a significantly lower level of consumption.



**Reduced use of materials**

If there is one art that is efficient, it is the art of reduction. Less material consumption due to optimised designs is one aspect. Another is reducing the number of components. On average, Kärcher machines consist of significantly fewer components than comparable competitor models. The resulting lighter weight not only saves driving energy, it also saves a serious amount of raw materials and energy in manufacture.



**Effective dust filtering**

Dust is a nuisance to people and the environment and can be detrimental to health and ecology. Kärcher vacuums feature efficient filter systems with innovative components, such as the Tact and Tact<sup>2</sup> systems for fully automatic filter cleaning as well as HEPA filters for hygienically clean, particle-free exhaust air. Fleece filter bags with a better degree of separation, double the retention capacity and longer service life compared to paper filter bags. And last, but not least, certified safety vacuum cleaners for critical applications.



**Comprehensive spare parts supply**

Durable investment goods can only fully develop their economical and environmental advantages if all spare parts are available until the end of their service life. Depending on the particular device, Kärcher guarantees a spare parts supply for up to ten years after a model goes out of production.

# We are there for you, wherever you need us.

Kärcher stands for top performance – not just with our products, but also with service. As the world's largest manufacturer of cleaning machines, we are there for our customers all around the world and at more than 50,000 service and sales points. With sound advice, excellent service and quick repairs. This is how we give you peace of mind. Kärcher – your reliable partner.



## **Hotline**

Friendly. Competent. Solution-oriented. Kärcher hotline staff are familiar with all products and can provide sound advice and assistance by telephone.

## **Application advice**

We provide application advice to ensure that you always have the most efficient solution. The size of the operation and areas of application are the decisive factors in determining your equipment.

## **Service contracts and extended warranty**

Top performance every time: with service contracts, your devices are always ready to use. Optionally with inspection, service or the full service package. Our warranty extension and machine breakdown insurance provide you with additional protection.

## **Refurbished machines**

Machines in top condition at very attractive terms. A new machine is not always cost-effective. This is why we also offer you affordable refurbished devices for economical planning.

## **Local presence**

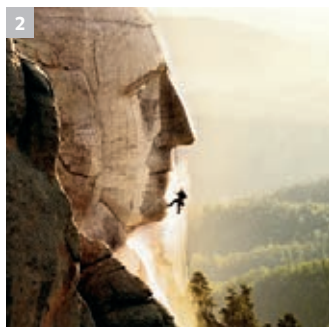
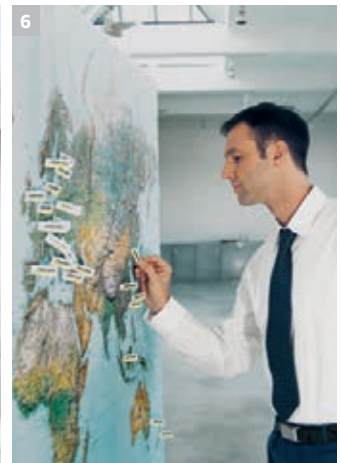
We guarantee you personal service. Our global service and sales network ensures that you always have a competent contact partner locally, for all enquiries regarding service, advice or sales.

## **Technical training**

Get the most out of your equipment: With our local technical training courses, we can show you and your employees how to use each Kärcher device as effectively as possible.

# Enthusiasm. Innovation. Success.

Since its beginnings more than 75 years ago, as a value-oriented family business, Kärcher has become a world brand with three strong attributes: top performance, innovation and quality. Today, the Kärcher brand enjoys the reputation of being a global leader and resource-conserving supplier of professional cleaning systems and is synonymous with reliable products, optimal user value and ongoing commitment to the environment, culture and sport.



## 1 Seattle's highest building: the Space Needle

A Kärcher team pressure-washed the structure up to a height of 184 m. The job took eight weeks, working only at night.

## 2 A facelift for the heads of state

Clean again: In 2005 Kärcher cleaned the National Memorial on Mount Rushmore.

## 3 Innovative right from the start

In 1950, Kärcher developed the first hot water high-pressure cleaner in Europe for professional cleaning.

## 4 Clean environment

Kärcher works on environmental protection every day, with new products, technologies and investments in production facilities.

## 5 In-house research and development

Kärcher develops high-performance cleaning machines, accessories and special cleaning and care products.

## 6 Internationally represented

We are there for our customers all around the world.

## 7 Commitment to sports

Clean performance on the pitch. For several years, Kärcher has supported German and international football as a partner.

Please contact us for more information:

#### **Head Office Germany**

Alfred Kärcher GmbH & Co. KG  
Alfred-Kärcher-Straße 28-40  
71364 Winnenden

Phone +49 7195-14-0  
Fax +49 7195-14-2212

[www.kaercher.com](http://www.kaercher.com)

#### **North America**

Kärcher North America  
4555 Airport Way  
Denver, CO 80239  
U.S.A.

Phone +1 303-738-5805  
Fax +1 303-865-2758

[www.karcherna.com](http://www.karcherna.com)

#### **United Kingdom**

Kärcher (UK) Ltd.  
Kärcher House  
Beaumont Road  
Banbury  
Oxon OX16 1TB

Phone +44 1295-752-100  
Fax +44 1295-752-103

[www.karcher.co.uk](http://www.karcher.co.uk)

#### **Ireland**

Kärcher Ltd.  
Unit 4  
E.P. Mooney Business Park  
Walkinstown Avenue  
Dublin 12

Phone +353 1-409-7777  
Fax +353 1-409-7775

[www.karcher.ie](http://www.karcher.ie)

#### **Southeast Asia**

Regional Head Office  
Southeast Asia

Kärcher South East Asia Pte. Ltd.  
3 Depot Close #01-01  
Singapore 109840

Phone +65 6897 18 11  
Fax +65 6897 16 11

[www.karcher.com.sg](http://www.karcher.com.sg)

#### **Hong Kong**

Kärcher Limited  
Unit 05, 13/F, Nanyang Plaza  
57 Hung To Road  
Kwun Tong, Kowloon

Phone +852 2-357-5863  
Fax +852 2-357-5632

[www.karcher.com.hk](http://www.karcher.com.hk)

#### **Australia**

Kärcher Pty. Ltd.  
40 Koornang Road  
Scoresby VIC 3179  
Melbourne, Victoria

Phone +61 3-9765-2300  
Fax +61 3-9765-2398

[www.karcher.com.au](http://www.karcher.com.au)

#### **New Zealand**

Kärcher Ltd.  
66 Allens Road  
East Tamaki  
Auckland 2013

Phone +64 9-274-4603  
Fax +64 9-274-6932

[www.karcher.co.nz](http://www.karcher.co.nz)

#### **South Africa**

Kärcher (Pty) Ltd.  
Cnr. Mount Joy & George Allen Rd.  
Wilbart Ext. 2  
P.O. Box 11818  
Vorna Valley, 1686

Phone +27 11 657 7300  
Fax +27 11 657 7440

[www.karcher.co.za](http://www.karcher.co.za)

#### **Dubai**

Kärcher FZE  
Quality Cleaning Systems  
Jebel Ali Free Zone  
Plot No. S-10104 South Zone  
RA 08, XB 1, Jebel Ali

Phone +971 4-886-1177  
Fax +971 4-886-1575

[www.kaercher.com](http://www.kaercher.com)