

Manage your business.
We will give you a clear view.

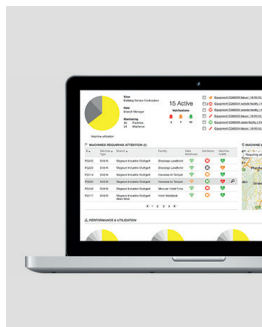


Complete transparency for more success.

Kärcher Fleet is the innovative professional fleet management from the global leader in cleaning technology. This unique, comprehensive and future-orientated solution was developed in collaboration with leading contract cleaners. Kärcher Fleet delivers the respective relevant information to the cleaning task managers for a seamless overview about machines, staff and responsibilities. On this basis, optimisation of processes can be promoted as more efficiency can be achieved in the performance of different cleaning tasks.



Industry specific solution



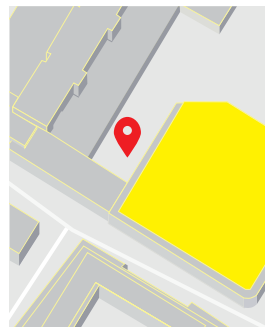
Reliable cleaning processes



Transparent fleets under control



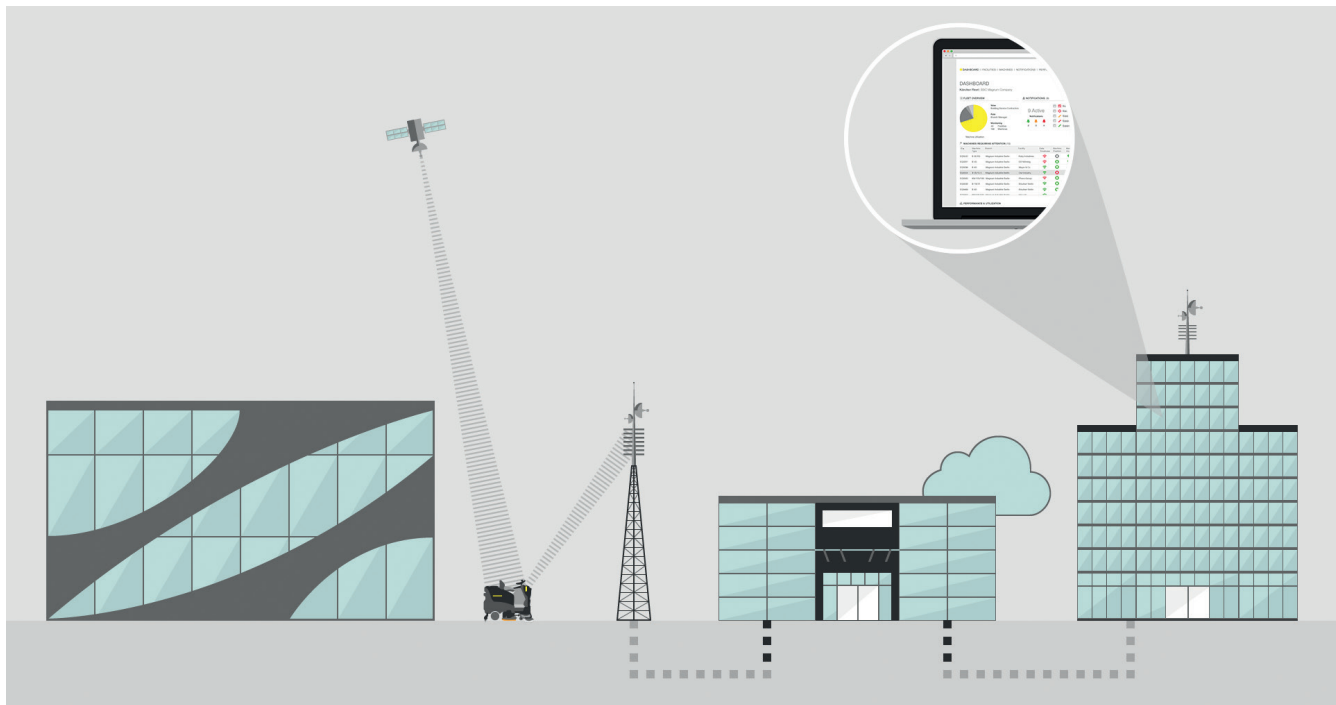
Increased machine utilization



Secure fleets

The principle and benefits of Kärcher Fleet are based on machine data, which are processed into meaningful information. This information can be accessed through a modern, web-based portal. Different versions of the portal are at the disposal of fleet managers, dependent on branch affiliation. Through this, Kärcher Fleet offers relevant, concrete and current information for each respective type of fleet. The structures, locations, task

managers and responsibilities within the fleet, as well as the measurement criteria, are illustrated both industry-specific and company-related. The reliability of the cleaning processes can thereby be increased significantly. Through better machine coordination, the protection against misuse and theft, as well as increased machine availability, Kärcher Fleet offers important distinguishing features for each industry.



Healthcare



Building Service
Contractors



Retail



Industry

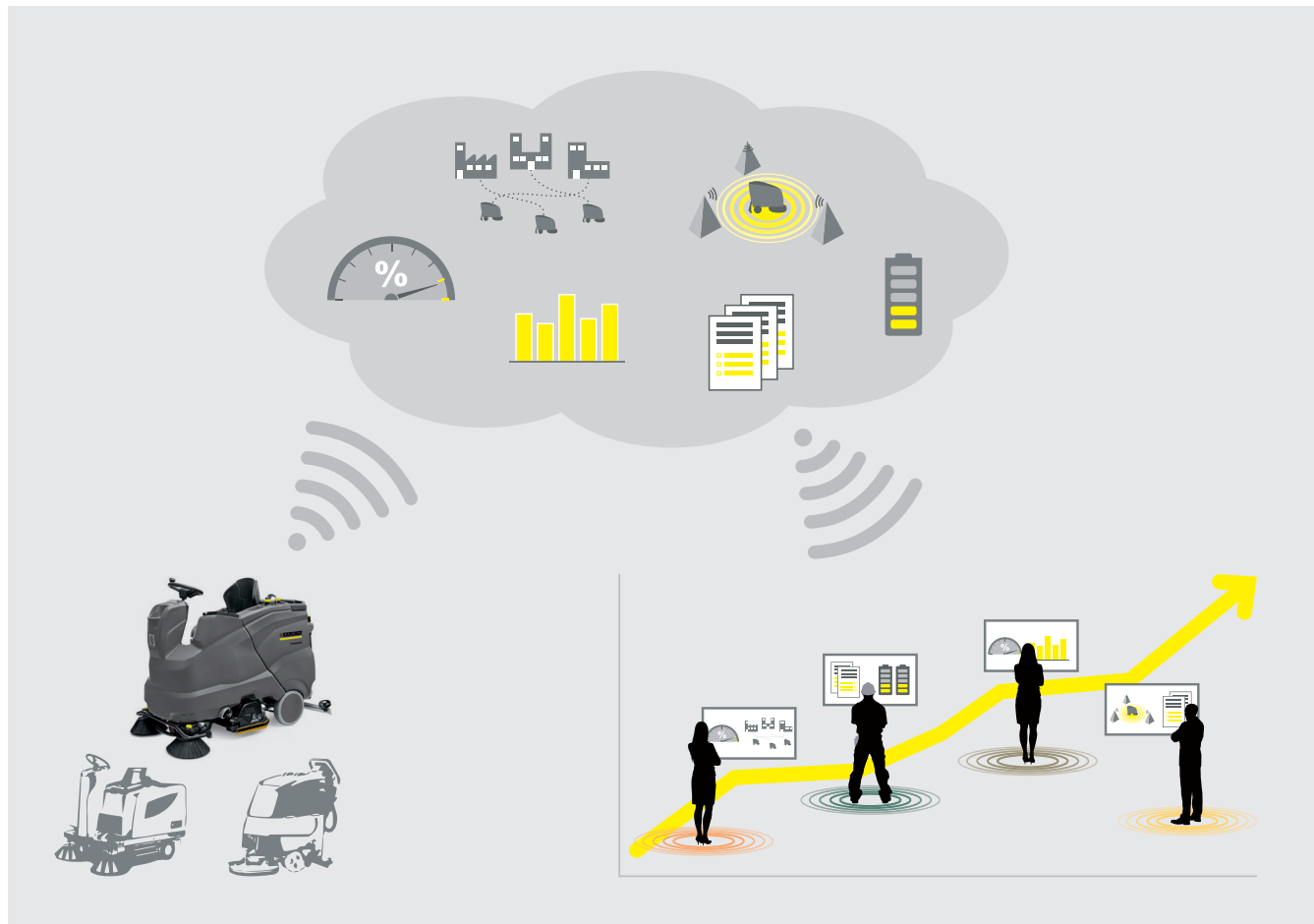
The innovative Fleet Management solution for your business

Kärcher Fleet gives management and fleet managers the opportunity to continually optimise the fleet used, to monitor if the machines are being used according to plan, to be informed in a timely manner in cases of violations or important fleet conditions and pursue preventative management. Kärcher Fleet

offers full transparency in the administration and operation of fleets for different-sized organisations and structures. Today Kärcher Fleet can be used for machines of different manufacturers, and marks the dawn of a new era of sustainable fleet management.

You can't be everywhere, but you can know everything!

What you see is what you need. With task-oriented access, Kärcher Fleet users only receive the information that is relevant for them. Alarms, warnings and information are individually adjustable. Kärcher Fleet is precisely aligned to the requirements of different industries and marks a new level of efficiency and professionalism in fleet management.



Simple planning and management

The planning and control of cleaning activities can be made a success at different levels of management with Kärcher Fleet. Authorised users can make up-to-date changes to the structure or responsibilities at any time. The important notifications and current state of the fleet will be clearly displayed on the dashboard, dependent upon authorisation. The representation of the spatial allocation of machines to places of work takes place graphically on a map. The current status is represented by clear indicators. Fleet operators can view the status around the clock: whether the machines are used properly and according to plan, whether the cleaning times are respected, whether maintenance or repairs are necessary and much more besides. Detailed information is accessible with just one click directly in the overview. Kärcher Fleet transmits the data in near real-time, even on smartphones or other mobile applications, thereby optimising fleet utilisation or, if necessary, allowing for corrections to be made almost immediately.

Continuous availability

With Kärcher Fleet, operators always have a complete overview of all machines – restricted even from other manufacturers – as well as their availability, condition and planned or actual locations. In the event of any deviations in planned status, authorised persons are immediately informed by an automated alarm and can identify the cause as well as take measures. Battery conditions, such as charging cycles, are monitored in order to optimise the use of batteries and machines.

Increased machine utilisation

Too low a machine utilisation quickly generates costs that rocket the total cost of the fleet skywards. With Kärcher Fleet, every fleet operator can set the desired daily use of machine times individually.



Complete documentation

With automatic saving and collation of machine data and fleet information, Kärcher Fleet enables the possibility of report creation at any time. Pre-completed template reports can be brought up and used with just a mouse click. Classic export and printing functions are available and simplify the use of information for individual purposes, while proof of services rendered is available at any time.

Predictive service

Costly service calls can be avoided by permanently monitoring the condition of the machine. Service technicians will thus only be contacted when machines need maintenance. Through colour coding and categorisation of reports according to information, warnings or alarms, measures can be taken in a timely manner.

Increased profitability

With Kärcher Fleet, various approaches to cost optimisation are available: Machines can be used more efficiently and rarely malfunction. The coordination of transportation and deployment at different locations can be improved and therefore save time and resources. Fleet managers save considerable time and money because technical inspections can be targeted to needs.

Service rendered. Customer satisfied.

Adherence to cleaning times is a new challenge every day. Those who can recognise and intervene on time always have full control over the service to be performed. Kärcher Fleet supports the optimal performance of the cleaning task, in the desired time frame and at the intended location. The service promise is kept and the customers are satisfied.



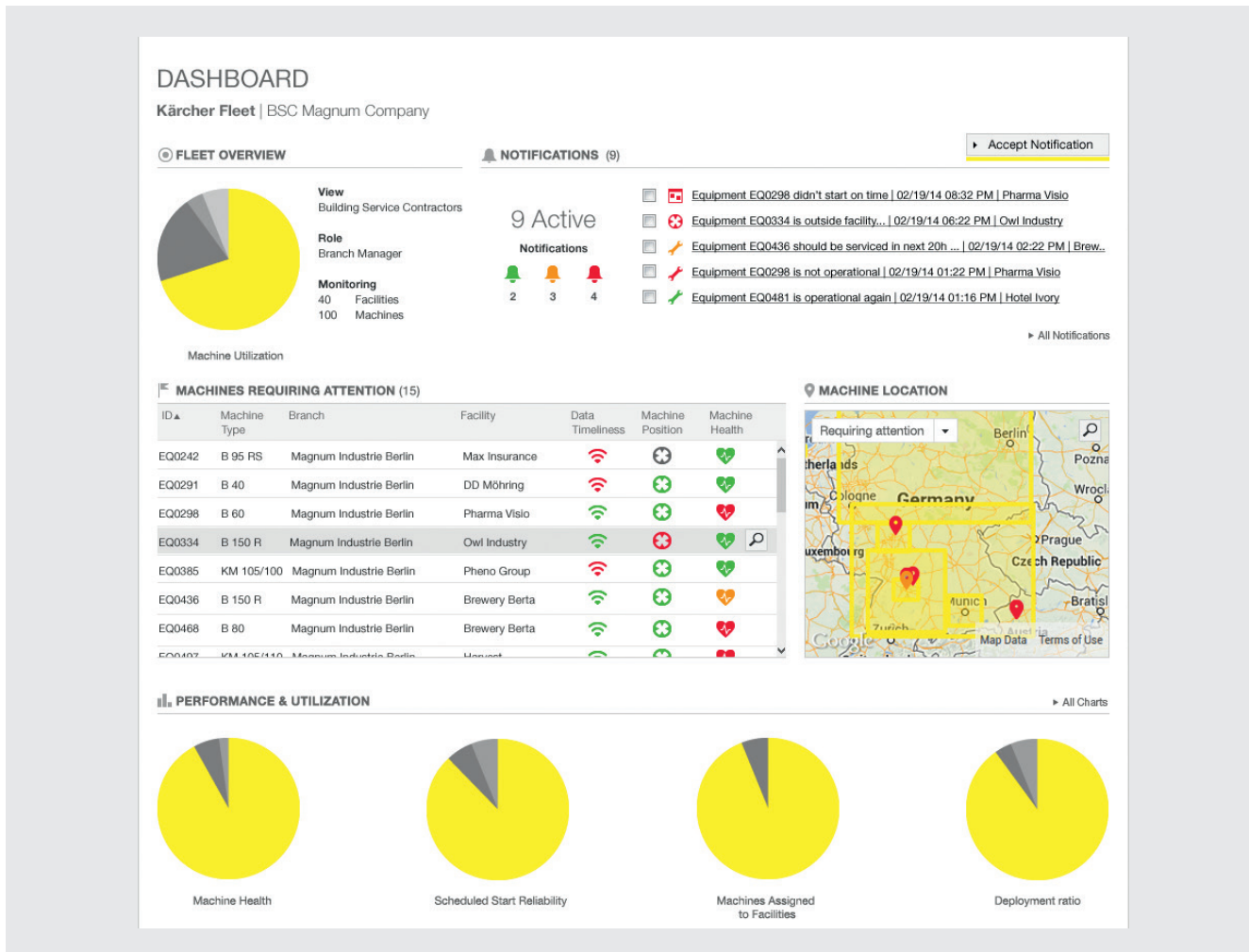
Cleaning performance under control

With Kärcher Fleet, fleet operators can set the desired daily use of machine times individually. Target/Actual comparison is depicted graphically and shows deviations from the fleet plan. If deviations are identified, for example, if the planned work start

time is not adhered to, automated alarms ensure quick recognition of the situation and the immediate possibility to correct that situation.

Kärcher Fleet: Your advantages.

If competent fleet management was easy, everybody would have it. This is precisely the goal of Kärcher Fleet. This innovative as well as functional and user-friendly system combines the experience and knowledge of a global market leader for cleaning technology with the practical expertise. The results are astounding – Kärcher Fleet impresses with its high efficiency and incredible ease of use.



User-optimised portal

The Kärcher Fleet user portal is clearly structured and easy to use. Intensive training is not required. The key indicators for the main fleet will be illustrated by means of diagrams. Changing from "Overview" to "Detailed view" can be achieved intuitively with just one click.

Individually configurable

Authorised users can employ the Kärcher Fleet system for different purposes. Through individual settings, the focus can be set as required on machines or fleet information, security, machine reliability or control.

Controlled function

Kärcher Fleet ensures control of the vital functions of the machines and immediately sends a message to the relevant staff via automated e-mail when a deviation or malfunction occurs: alarms, information, warnings.

Anywhere, any time

Access to Kärcher Fleet can be obtained from virtually anywhere and at any time, whether in the office, on the road, on your PC or laptop or via your mobile.

No installation

Kärcher Fleet is a web-based solution for which only a functioning, secure internet connection is required to be able to use this fleet management system to its fullest extent. The telematics box encodes all information and sends it via modern transference technology (GSM) at UMTS speed via a global server cloud. Authorised users can obtain such information from this cloud as relevant data and analyses.



makes a difference

Please contact us for more information:

Head Office Germany

Alfred Kärcher GmbH & Co. KG
Alfred-Kärcher-Straße 28-40
71364 Winnenden

Phone +49 7195-14-0
Fax +49 7195-14-2212
www.kaercher.com

North America

Kärcher North America
750 W. Hampden Avenue
Suite 400
Englewood, CO 80110
U.S.A.

Phone +1 303-738-5805
Fax +1 303-738-2758
www.karcherna.com

United Kingdom

Kärcher (UK) Ltd.
Kärcher House
Beaumont Road
Banbury
Oxon OX16 1TB

Phone +44 1295-752-100
Fax +44 1295-752-103
www.karcher.co.uk

Ireland

Kärcher Ltd.
Unit 4
E.P. Mooney Business Park
Walkinstown Avenue
Dublin 12

Phone +353 1-409-7777
Fax +353 1-409-7775
www.karcher.ie

**Regional Head Office
Southeast Asia**

Kärcher South East Asia
Pte. Ltd.
5 Toh Guan Road East,
#01-00 Freight Links
Express Distripark,
Singapore 608831

Phone +65 68971811
Fax +65 68971611
www.karcher.com.sg

Hong Kong

Kärcher Limited
Unit 05, 13/F, Nanyang Plaza
57 Hung To Road
Kwun Tong, Kowloon

Phone +852 2-357-5863
Fax +852 2-357-5632
www.karcher.com.hk

Australia

Kärcher Pty. Ltd.
40 Koornang Road
Scoresby VIC 3179
Melbourne, Victoria

Phone +61 3-9765-2300
Fax +61 3-9765-2398
www.karcher.com.au

New Zealand

Kärcher Ltd.
66 Allens Road
East Tamaki
Auckland 2013

Phone +64 9-274-4603
Fax +64 9-274-6932
www.karcher.co.nz

South Africa

Kärcher Pty. Ltd.
Corner Mount Joy &
George Allen Road
Wilbart Ex2
Germiston
Johannesburg 2008

Phone +27 11 657 7300
Fax +27 11 657 4872
www.karcher.co.za

Dubai

Kärcher FZE
Quality Cleaning Systems
Jebel Ali Free Zone
Plot No. S-10104 South Zone
RA 08, XB 1, Jebel Ali

Phone +971 4-886-1177
Fax +971 4-886-1575
www.kaercher.com