

KÄRCHER

makes a difference



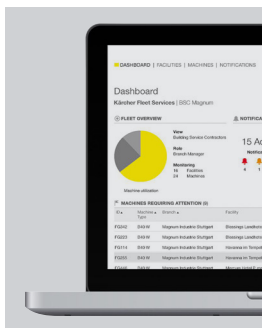
YOU MANAGE YOUR BUSINESS. WE PROVIDE A CLEAR VIEW.

COMPLETE TRANSPARENCY DRIVES SUCCESS.

Kärcher Fleet is an innovative professional fleet management system developed by the global leader in cleaning technology. This comprehensive, IoT based solution was created in collaboration with the industry's leading contract cleaners. Kärcher Fleet provides task managers with frequently updated machine data, allowing them to maximize performance by allocating resources where needed. This helps to optimize processes, resulting in improved efficiency for a variety of cleaning tasks.



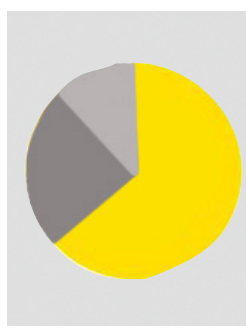
Industry specific solution



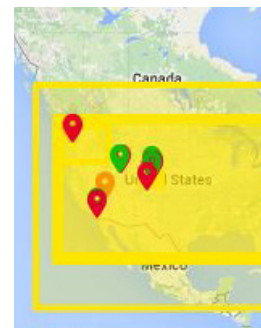
Easily access machine details



Confirm work completion



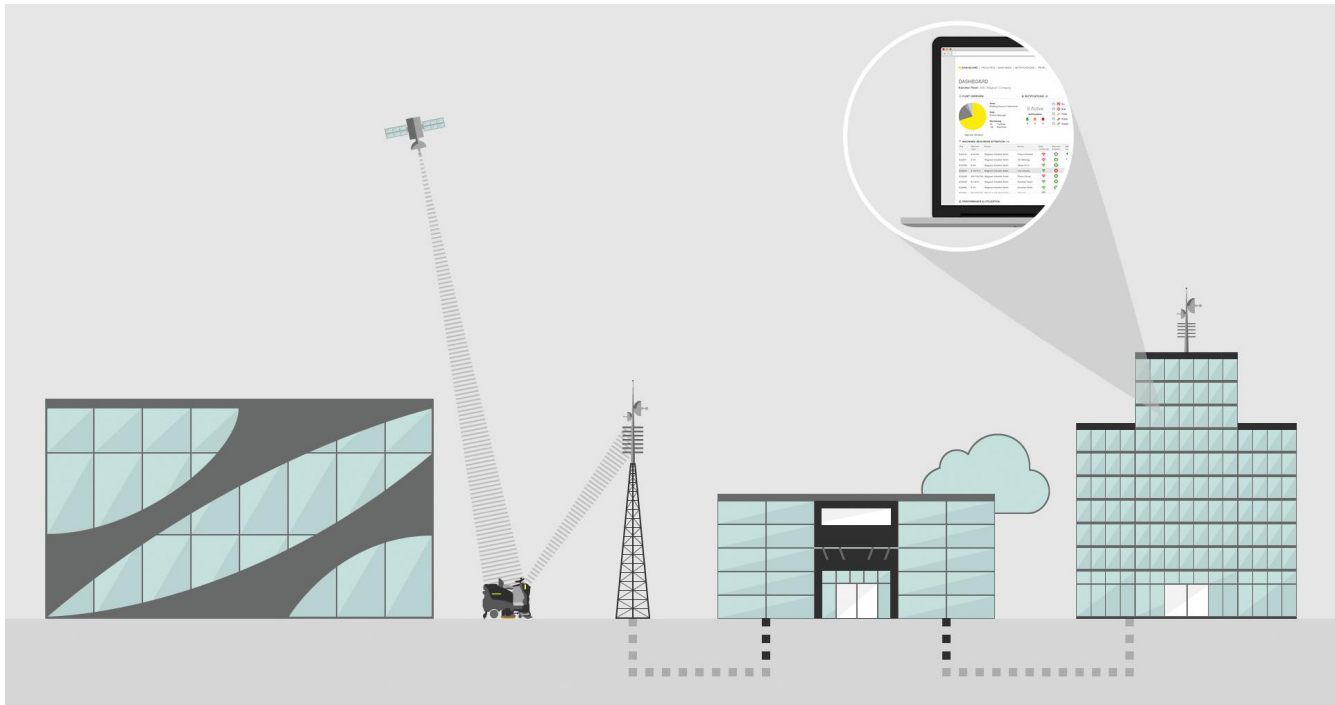
Increased machine utilization



Knowledge of equipment location

Kärcher Fleet processes machine data into meaningful information that can be accessed through a modern, web-based portal. Fleet managers have the option of selecting different versions of the portal based on their needs. Users have instant access to relevant, concrete and current information for each machine they are tracking.

Data on machine health, current location, and operating hours per day is conveniently shown and can be compared to the expected targeted plan. This allows for better machine coordination, protects against misuse and theft, and maximizes machine availability, resulting in significant increase in the reliability of the cleaning process across the board for any facility in any industry.



Healthcare



**Building Service
Contractors**



Retail



Industry

The innovative Asset Management solution for your business

Kärcher Fleet provides senior management and branch managers the opportunity to continually optimize their equipment, to monitor if the machines are being used according to plan, to be informed in a timely manner in cases of machine breakdown or theft. Kärcher Fleet

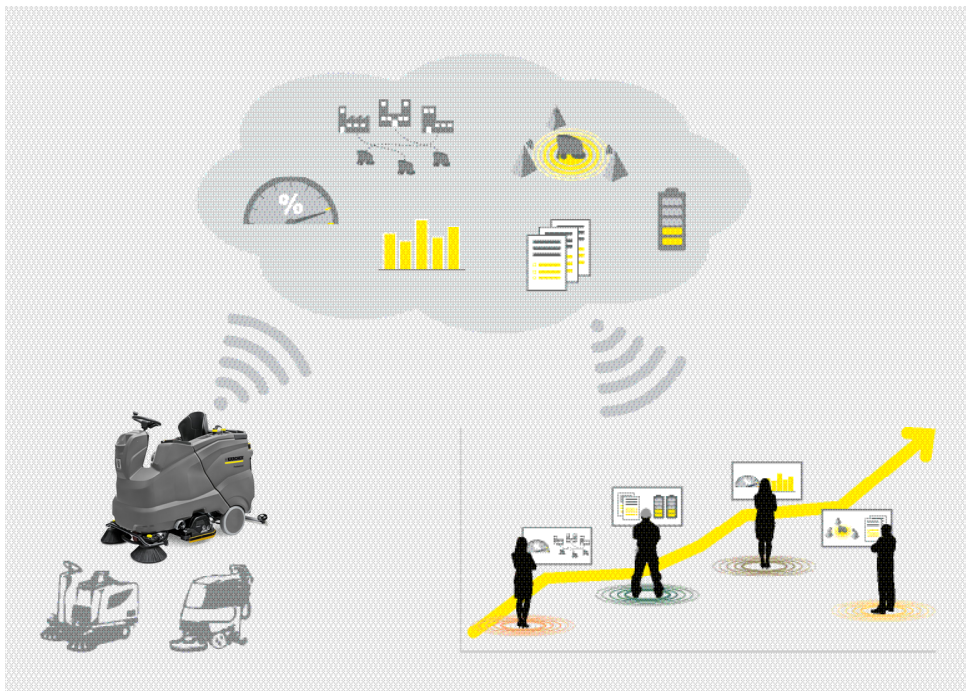
offers full transparency in the administration and operation of equipment for different-sized organizations and structures. Today, Kärcher Fleet can be used for machines from different manufacturers, and marks the dawn of a new era of sustainable fleet management.

NOW YOU CAN BE EVERYWHERE AT ONCE

Before Kärcher Fleet you had little insight into the condition of your equipment. Without checking the hour meter on the display, you had no idea how much it was actually being used. Without walking through the facility, you did not know where it was even located. To determine any of these specifics, you had to leave your desk, find the machine and verify these details on your own.

Managing your assets with Kärcher Fleet gives you all your machine information at your fingertips at any time. From your office, home, or any location with an internet accessible device, you will know how many machines you own, where each machine is located, the condition of each machine, and exactly how much it is being used daily to perform the required cleaning tasks. Instead of traveling from site to site, simply check on your equipment when it is convenient for you, all in only a few minutes.

With Kärcher Fleet, you can reduce the amount of time you worry about your assets and you can spend that time focusing on the management of your employees and optimizing your business.



Simple planning and management

The planning and control of cleaning activities can be taken to the next level with Kärcher Fleet. Authorized users can make up-to-date changes to the organizational structure or individual responsibilities at any time. The important notifications and current state of your equipment will be clearly displayed on the portal. The current status is represented by clear indicators. Fleet operators can view the status around the clock: whether the machines are used properly and according to plan, whether the cleaning durations are followed, whether maintenance or repairs are necessary, and much more. Detailed information is accessible with just one click directly in the web portal. Kärcher Fleet transmits data in near real-time, thereby optimizing fleet utilization, or if necessary, providing the information needed for corrections to be made.

Continuous availability

With Kärcher Fleet, operators always have a complete overview of their machines - even from other manufacturers - which begins with operating hours and GPS location services. For their Kärcher equipment with full functionality, users not only know usage and GPS, but also monitor the status of machine health, as well as battery condition and charging cycles to optimize battery life. In the event of any deviations in planned status, authorized persons are immediately informed by an automated notification, considerably improving productivity and reducing downtime.

Increased machine utilization

Kärcher Fleet provides visibility into machine utilization. Input the expected usage parameters, and easily track usage against plan. Quickly identify the locations and applications where equipment and cleaners are underutilized, and make the necessary adjustments to improve equipment allocation.



Complete documentation

Machine data for your equipment fleet is saved and organized automatically. At your convenience, generate reports at any time. Standard reports have been pre-configured and can be accessed simply with just a mouse click. Classic export and printing functions are available and will simplify the use of information for individual purposes.

Predictive service

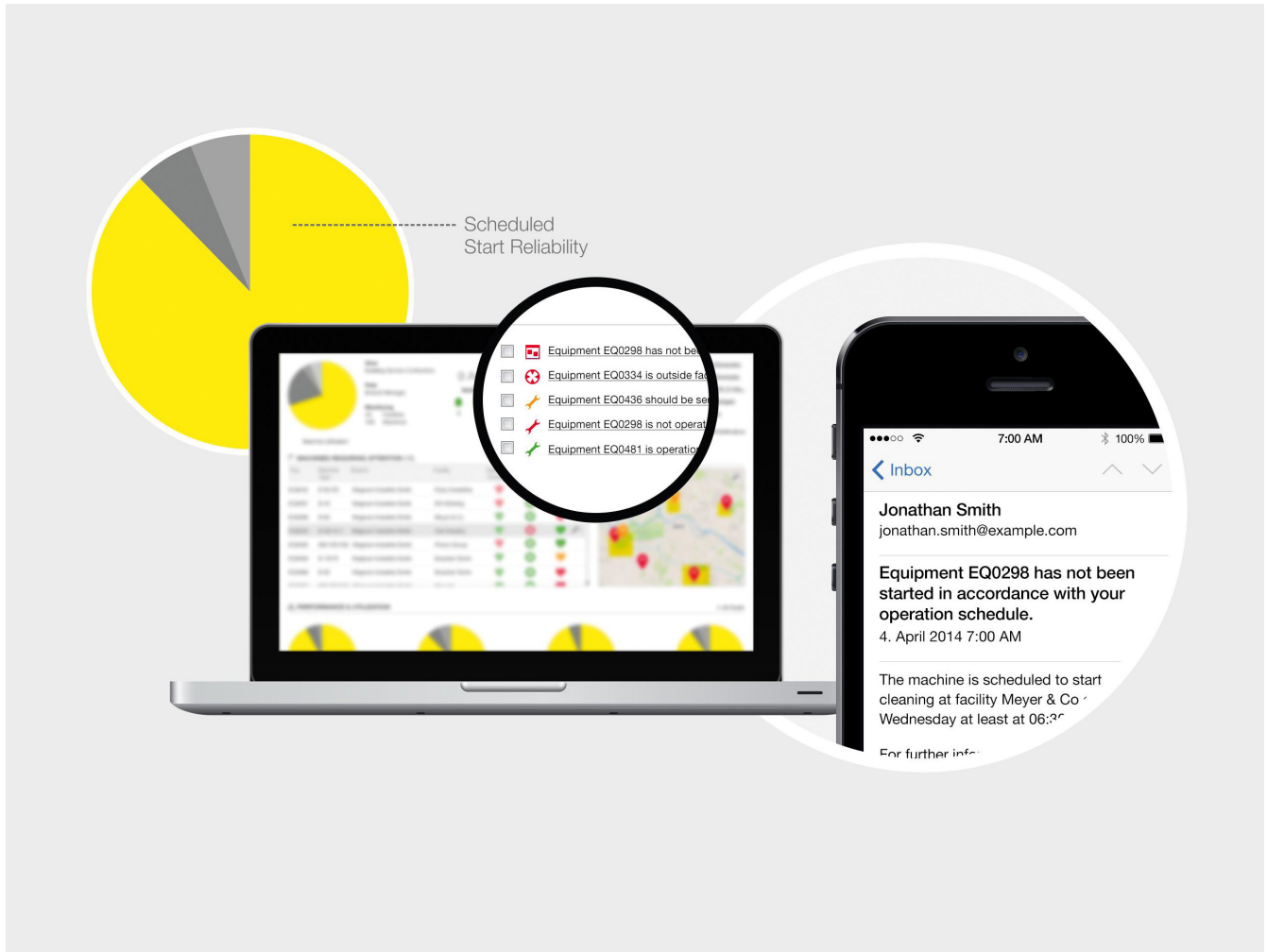
Costly service calls can be avoided by continuously monitoring the condition of the machine. Service technicians will only be contacted when machines need maintenance. Machine status is easily identified through icon color and additional notifications may be sent via email to all interested individuals. Additionally, during routine service calls, other machines at the same location can be reviewed prior to the service technician being dispatched, reducing the number of visits.

Increased profitability

With Kärcher Fleet, various approaches to cost optimization are available. Machines can be used more efficiently which drives productivity. Equipment managers spend less time traveling from site to site to inspect machine health and usage. Service managers save considerable time and money because technical inspections can be targeted to specific machine needs.

SERVICE COMPLETED. CUSTOMER SATISFIED.

Adherence to required cleaning durations, at specific cleaning times, is a new challenge every day. Those who can recognize and intervene on time always have more control over the service being performed. Kärcher Fleet supports the optimal performance of the cleaning task, in the desired time frame at the intended location. By tracking how much the machines are being used during the time window available for cleaning, the service provider ensures promises are kept and customers are satisfied.



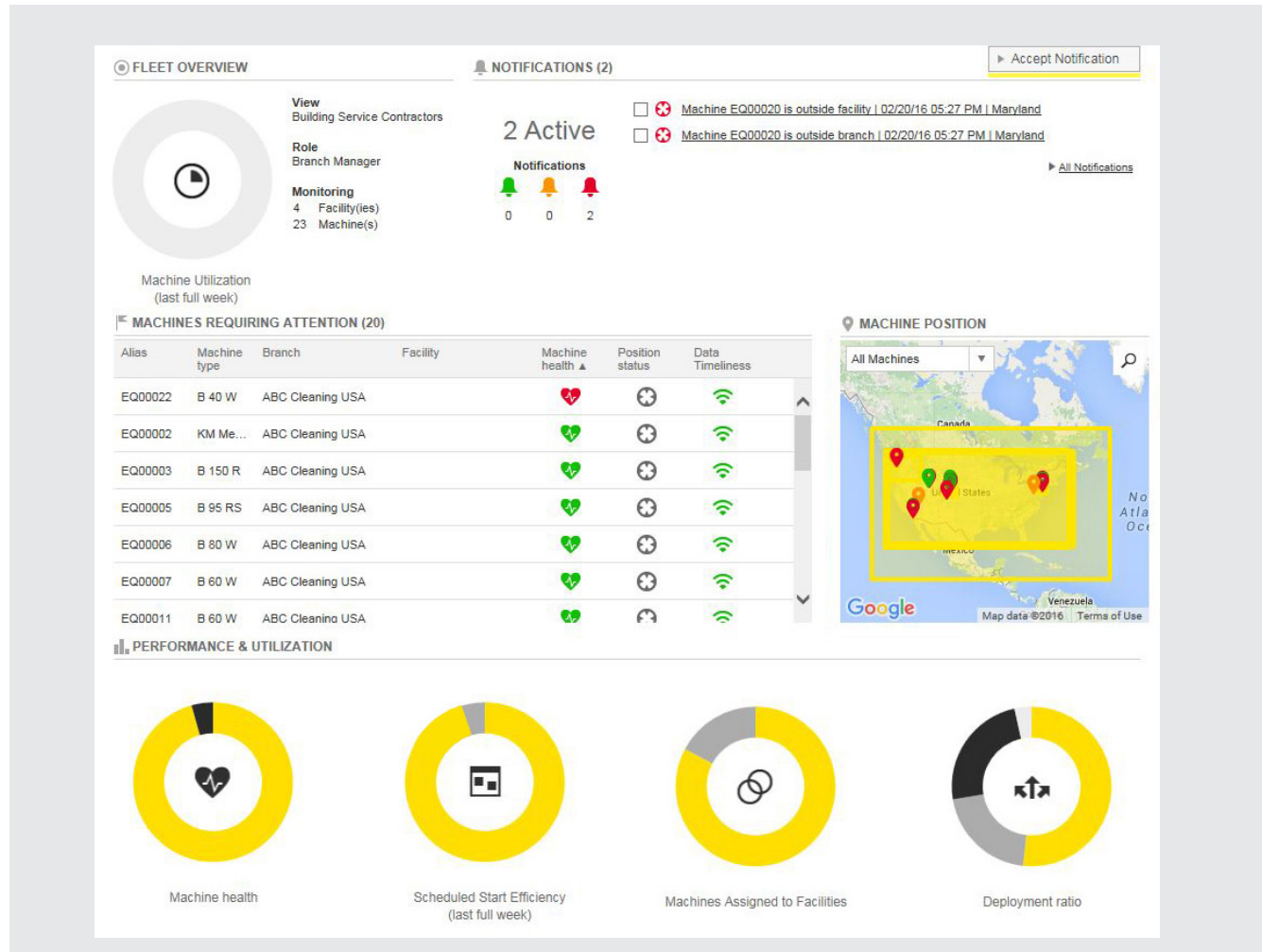
Cleaning performance under control

With Kärcher Fleet, operators can set the desired daily use of machine times individually. Target versus Actual comparison is depicted graphically and shows deviations from the clean-

ing plan. If deviations are identified, such as, total cleaning duration is not achieved, automated alarms ensure immediate awareness of the situation, increasing the likelihood all cleaning tasks will be completed on time.

KÄRCHER FLEET: YOUR ADVANTAGES

If competent fleet management was easy, everybody would have it. Kärcher Fleet provides you with a simple user-friendly tool which brings a wealth of knowledge and information to your fingertips. This innovative system, from the global market leader for cleaning technology, delivers astounding results in any type of cleaning environment.



User-optimized portal

The Kärcher Fleet user portal is clearly structured and easy to use. Intensive training is not required, although training videos are available for use at any time. The status of your fleet will be illustrated in a manner which is easily understood with very little time investment. Changing from the overview to detailed view can be achieved intuitively with just one click.

Individually configurable

Authorized users can employ the Kärcher Fleet system for different purposes. Through individual settings, the focus can be set as required on machines or fleet information, security, machine reliability or control. Limit access to only the equipment necessary, improving both efficiency and security at the same time.

Effective monitoring

Kärcher Fleet monitors the vital functions of machines and immediately sends a message to the relevant staff via automated email when a deviation or malfunction occurs.

Anywhere, any time

Access to Kärcher Fleet can be obtained from virtually anywhere and at any time, whether in the office or on the road, with your PC, laptop, or any mobile device.

No installation

Kärcher Fleet is a web-based solution for which only a functioning, secure internet connection is required to be able to use this fleet management system to its fullest extent. The telematics box encodes all information and sends it via modern cellular technology (GSM) to a global server cloud. Authorized users can obtain access to only their information from this cloud based database through modern data security techniques.

Please contact us for more information:

North America

Kärcher North America
4555 Airport Way
Denver, CO 80239
U.S.A.

Phone +1 888-805-9852
Fax +1 800-248-8409

www.karcherna.com/us
fleet@karcherna.com