

KÄRCHER

makes a difference



ICE COLD ON DIRT – GENTLE ON SURFACES

PROFESSIONAL | ICE BLASTER | DRY ICE PELLETTIZER



WITH DRY ICE, CLEANING IS CONVENIENT AND EFFECTIVE.

Do you want to a way to remove stubborn dirt that is as effective as it is gentle? Then the ice blaster from Kärcher is the right solution for you. The system uses compressed air and dry ice pellets to remove rubber residues, oils, grease, parting agents, dyes etc. from workpieces or surfaces. No abrasive residues are left behind and the machines do not need to be disassembled to be cleaned. With a Kärcher dry ice pelletizer, you can produce the pellets yourself to optimise the effect and reduce costs. With the right accessories for all of the diverse applications, you can always achieve outstanding cleaning results.



YOU SIMPLY CLEAN. CLEANING UP IS A THING OF THE PAST.



The innovative ice blaster system

6	Ice blaster – cool and versatile	14	Features and technical data
8	Cleaning without limits	16	Accessories
10	The working principle	22	Kärcher Services
12	Pelletizer		



You know the problem: soiled moulds, parts or machines are often difficult to clean. Sandblasting leaves behind spray agents such as sand or glass granulate. This means having to clean up after cleaning. Forget about that. Start cleaning with powerful ice blasters and dry ice pellets. These pellets evaporate completely into carbon dioxide (CO₂). All that remains is perfect cleanliness.

Advantages of dry ice blasting:

- 1 No more preparation**
No need to disassemble machines for cleaning. The pellets easily reach into even the smallest nooks and crannies.
- 2 Minimum machine downtimes**
You know how long it currently takes to prepare for cleaning. And the follow-up work. So you also know how much time you could save.
- 3 Environmentally-friendly cleaning**
Clean without additional chemicals or spray agents. No waste material. No harmful substances. No disposal.
- 4 Surfaces remain intact**
Do you want to clean in a way that is gentle on sensitive surfaces? Dry ice blasting removes dirt without damaging surfaces.
- 5 No residues**
Dry ice sublimates completely to CO₂. No spray agent remains, and there is no waste water.

A COOL SYSTEM



Ice blaster IB 7/40 Classic
Compact class



Ice blaster IB 7/40 Adv
Compact class



Ice blaster IB 15/120
Super class

The ice blaster, dry ice pelletizer and cool box combined are an invincible team in the fight against stubborn dirt. You will be impressed by uncompromising Kärcher quality, excellent workmanship and high functionality.



Dry ice pelletizer IP 55



Dry ice pelletizer IP 120



Kärcher dry ice box (EPP)

FOR YOU. FOR EVERY- THING. FOR EVERYWHERE.

Kärcher ice blasters are even suitable for use in areas where cleaning with water or sand is legally prohibited. There is no need for detergents or chemicals. The dry ice pellets evaporate without residues – without leaving moisture behind. And you can very easily produce the pellets yourself with the powerful Kärcher dry ice pelletizer.



1 Automotive industry, foundries and plastic injection moulding plants

Ice blasters remove binding and parting agents from all kinds of parts and workpieces. They can be used to remove residues such as silicone, rubber, dyes, paints, etc. from injection moulds, tools and the entire production line. Everything is cleaned perfectly, without residues.

2 Printing plants

After dry ice blasting, all printing machines, printing cylinders and tools look as good as new.

3 Plastic and packaging industry

Use the dry ice blaster to remove silicone and rubber as well as dyes, paints and many other kinds of contamination from injection moulds and production lines.

4 Paper industry

In the paper industry, glue, lime, dust and cellulose are a problem which can cause machine failures and compromise quality. When you use dry ice, your facilities are cleaned much faster and are soon ready to use again.



5 Timber and electrical industry

Dry ice blasting is the perfect cleaning solution for wood-working machines, generators, turbines, control cabinets and other installations.

6 Food, pharmaceutical and cosmetics industry

An ice blaster can be used to remove coking, burnt-on soot and encrustation, fat and starch from filling and mixing plants, production lines, handling systems as well as tanks and furnaces.

7 Steel, metal and machine construction

Deep cleaning and maintenance cleaning of production machinery, welding robots, conveyor belts and paint shops is extremely quick and easy with ice blasters from Kärcher.

8 Local authorities and municipalities

Graffiti and chewing gum present a special cleaning problem for cities and municipalities. They require a cleaning method that cleans walls and surfaces thoroughly, yet gently. The ice blaster is the perfect solution. The dry ice pellets can be used to remove even stubborn dirt without damaging the surface.

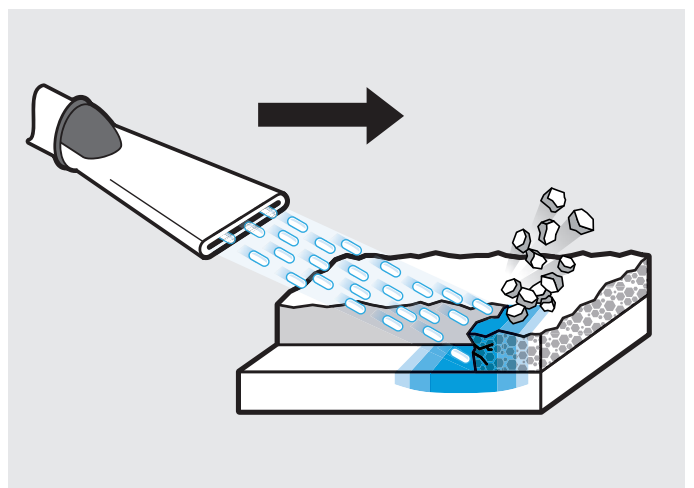
PROFESSIONALS LIKE IT ICE-COLD.



Among the Kärcher range of ice blasters, you will find the right specialists for your needs. The IB 7/40 can work with very little compressed air and is therefore ideal for use on existing compressed air systems. The IB 15/120 is one of the most powerful ice blasters on the market and achieves a very high area performance with a very high air throughput. As a result, the IB 15/120 covers a broad application spectrum and is perfect for cleaning service providers in industry, for example.

Cleanliness = cold × velocity

The ice blaster uses compressed air to accelerate the dry ice pellets, which are up to 3 mm in size, to a velocity of over 150 m/s. This high velocity and the cold temperature of -79°C freeze the dirt and cause it to crack. The pellets penetrate the cracks, burst and force the dirt off. This is an especially effective method of gently removing virtually all types of dirt.



AFFORDABLY PRODUCE YOUR OWN DRY ICE PELLETS.



IP 55 - the compact ice pelletizer from Kärcher



IP 120 - the middle class ice pelletizer from Kärcher



IP 220 - the super class ice pelletizer from Kärcher

From carbon dioxide to ice

During the production process, liquid carbon dioxide flows into the pelletizer's compressing cylinder and is turned into dry ice snow by the pressure drop. A hydraulic cylinder

compresses this dry ice snow, which is then pressed through an extruder plate. This causes rods of dry ice to form, which are then broken down into pellets.





With pelletizers from Kärcher, you can very easily and affordably produce as many dry ice pellets as you need. This allows you to save on purchase and transport costs and always have fresh pellets. Cleaning with freshly made dry ice can cut cleaning times by half under ideal conditions. And the fresher the pellets, the better the cleaning result.

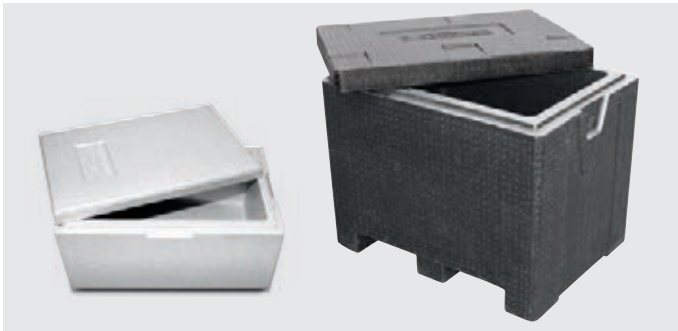


Any amount at any time

The Kärcher pelletizers IP 55, IP 120 and IP 220 are the ideal solution for producing any quantity of dry ice pellets. The dry ice produced with Kärcher pelletizers can also be used for cooling heat-sensitive products, for example in the food industry.

Dry ice box for transport

The Kärcher dry ice box for transport and storage of dry ice pellets is available in two variants: as a disposable polystyrene box for up to 25 kg of dry ice and as a reusable box made from expanded polypropylene (EPP) for up to 100 kg of dry ice. The reusable box offers good insulation, is lightweight and durable.



PERFECT OVERVIEW. EVERYTHING UNDER CONTROL.

1 Glass-fibre reinforced plastic dry ice container

Double wall foamed dry ice container of glass-fibre reinforced plastic. The pellets do not adhere to the container. Excellent insulation for low sublimation of the pellets.

2 Tool storage

Additional storage for nozzles, tools, gloves and other utensils.

3 Control panel

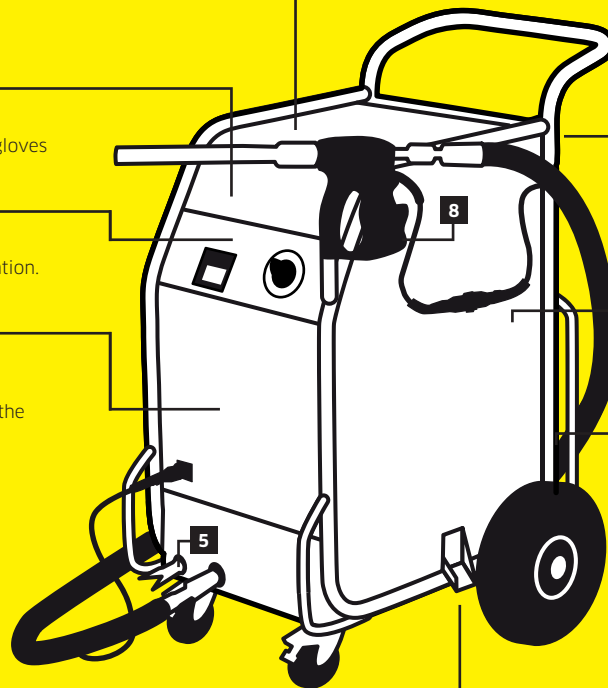
Convenient and easy ice blaster operation.

4 Robust stainless steel housing

Frames and panels are made entirely of stainless steel and withstand even the toughest conditions.

5 Integrated coiled earth cord

Prevents static build-up on the object being cleaned. No more sparking.



7 Innovative nozzle case holder

With the IB 15/120, all accessories are stored on-board for easy access.

8 Parking position for jet gun

The jet gun can be conveniently stored on the machine during breaks. Also ideal for changing the nozzles.

9 Self-sealing dosing unit

Maintenance-free, saves on servicing requirements and costs.

10 Integrated oil and water separators

Separates the moisture from the compressed air and prevents the machine from freezing.

6 Residual ice and tank emptying

Dry ice remaining in the machine after use is ejected at the push of a button. This prevents the machine from freezing. Condensation in the machine is significantly reduced.

Ice blaster



		IB 7/40 Classic/Adv*	IB 15/120
Technical data			
Current type	~V/Hz	1/220-240/50 or 60**	1/220-240/50 or 60***
Connection load	kW	0.6	0.6
Sound pressure	dB(A)	max. 99	Max. 125
Casing/frame		Stainless steel	Stainless steel
Weight excluding accessories	kg	70 / 71	91.5
Dimensions (L × W × H)	mm	510 × 760 × 1100	720 × 850 × 1100
Compressed air			
Hose connector		Claw coupling (DIN 3238)	Claw coupling (DIN 3238)
Working pressure	bar/MPa	2-10/0.2-1.0	2-16/0.2-1.6
Volume flow	m³/min	0.5-3.5	2-12
Compressed air quality		dry and oil-free	dry and oil-free
Dry ice blasting			
Blasting pressure	bar/MPa	2-10/0.2-1.0	2-16/0.2-1.6
Dry ice pellets	Ø in mm	3	3
Dry ice consumption	kg/h	15-50	30-120
Dry ice tank capacity	kg	15	40
Order no.		1.574-001.0 / 1.574-002.0	1.574-104.0

* The jet gun with remote control and coiled earth cord are only included in the scope of delivery with the IB 7/40 Adv.

** 60 Hz only in conjunction with modification kit 2.882-686.0 *** 60 Hz only in conjunction with modification kit 2.882-003.0

Ice pelletizer



		IP 55	IP 120	IP 220
Technical data				
Production quantity	kg/h	55	120	220
Current type	~V/Hz	3/400/50	3/400/50	3/400/50
Connection load	kW	1.6	4.0	5.6
CO ₂ supply line BSP connector	Inches	1/2	1/2	1/2
CO ₂ -storage tank (liquid phase)	bar	13-21	13-21	13-21
Weight	kg	147 (without accessories)	360 (without accessories)	540 (without accessories)
Dimensions (L × W × H)	mm	1150 × 600 × 1300	1320 × 700 × 1430	1560 × 800 × 1450
Order no.		1.574-110.0	1.574-111.0	On request

JET GUN
Heavy Duty



JET GUN
Advanced



JET GUN
Classic



NOZZLES
Flat jet nozzle

Jet width up to 100 mm for high area performance.



NOZZLES
Scrambler

Breaks up the pellets into finer particles for extremely gentle cleaning.



NOZZLES
Round jet nozzles

Extremely powerful nozzles with very high cleaning power.



OTHER ACCESSORIES
Hose trolley

Holds up to 80 m compressed air hose 1". Indispensable on any construction site.



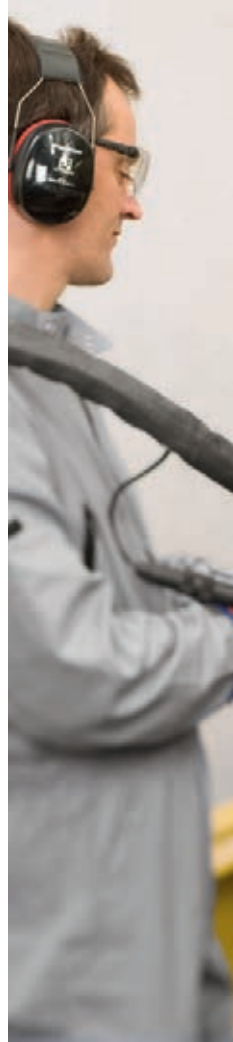
OTHER ACCESSORIES
Disposable protective cover

For especially dirty jobs. Protects the spray hose. Easy to change.



OTHER ACCESSORIES
Cavity nozzles

For cleaning pipes or blind holes.





THE RIGHT ACCESSORY FOR EVERY APPLICATION

You know that any system is only as good as its weakest point. And that excellent blasters can only be used to their full potential with the right accessories. The Kärcher accessories range for ice blasters is derived directly from practice and offers everything needed to achieve optimal cleaning results. For high area performance, nozzles with up to 100 mm jet width. For powerful stripping performance, the point jet nozzles. Or the large hose reel for convenient compressed air supply. The Kärcher system leaves nothing to be desired.

OTHER ACCESSORIES

Nozzle lights

Ideal for use in poorly lit areas.



AS PROFESSIONAL AS YOU: ACCESSORIES FROM KÄRCHER

You get everything you need: special nozzles for every application, e.g. short or long flat and round jet nozzles, configurable mini angled nozzles for cleaning

in confined spaces or round and flat angled nozzles. And from lights to personal protective gear, everything for professional and safe operation.

Nozzle sizes

Cleaning performance	Pressure in bar	IB 7/40 Air quantity index/ nozzle sizes		IB 15/120 Air quantity index/ nozzle sizes				
		XS Ø 5	S Ø 6	M Ø 7	L Ø 8	XL Ø 9	XXL Ø 10	
Very low blasting aggression For very light soiling or very sensitive surfaces, e.g. dust from rubber, grease and oil from soft plastics.	2	0.4	1.0	0.7	1.0	1.6	1.1	
	3	0.7	1.3	1.1	1.6	2.3	2.0	
Low blasting aggression For light soiling, e.g. oil and grease, light encrustations, adhesive residues, separating agents, rubber residues, cleaning of injection moulds.	4	0.9	1.7	1.7	2.2	3.0	2.8	
	5	1.1	2.0	2.3	2.9	3.6	3.7	
	6	1.3	2.4	2.7	3.5	4.3	4.5	
Medium blasting aggression For heavy soiling, e.g. removal of rust film, removal of underbody coating, cleaning of welding tongs.	7	1.6	2.7	3.1	4.0	5.0	5.0	
	8	1.8	3.0	3.6	4.6	5.7	5.9	
	9	2.0	3.4	4.0	5.3	6.4	6.7	
	10	2.3	3.7	4.5	6.0	6.7	7.5	
High blasting aggression For extremely stubborn soiling, e.g. paint removal, cleaning of heat exchangers, cleaning of die-casting moulds.	11		4.0	5.0	6.5	7.4	8.4	
	12		4.4	5.5	7.1	8.2	9.3	
	13		4.7	5.9	8.0	8.9	10.3	
Very high blasting aggression For extremely stubborn soiling, e.g. paint removal, cleaning of moulds, cleaning of power plant furnaces.	14		5.1	6.5	8.4	9.6	11.2	
	15		5.4	7.0	9.0	10.4	12.0	
	16		5.7	7.5	9.7	11.2	12.9	
Area performance								

Air consumption is shown in m³/min in the fields.

	up to 1 m³/min:	Industrial compressed-air system; entry-level compressor, e.g. Kaeser M 17, Compair C14
	1 - 2 m³/min:	Industrial compressed-air system; small compressor, e.g. Kaeser M 31, Compair C20GS
	2 - 3 m³/min:	Medium-sized compressor, e.g. Kaeser M 57, Compair C35
	3 - 5 m³/min:	Medium-sized compressor, e.g. Kaeser M 57, Compair C35
	5 - 7 m³/min:	Medium-sized compressor, e.g. Kaeser M 80, Compair C55
	7 - 10 m³/min:	Large compressor, e.g. Kaeser M 122, Compair C105
	> 10 m³/min:	Very large compressor, e.g. Kaeser M 250, Compair C200



				IB 15/120	IB 7/40 Adv	IB 7/40 Classic
		Order no.	Description			
Jet guns						
Jet gun, heavy duty	1	4.775-836.0	Ergonomic and lightweight jet gun with safety function to prevent unintentional triggering. Switch for selecting compressed air and dry ice or compressed air only.	<input checked="" type="checkbox"/>	<input type="checkbox"/>	<input type="checkbox"/>
Jet gun, Adv	2	4.775-837.0	Ergonomically shaped jet gun. The compact design of this spray gun makes it especially light and easy-to-use. Includes safety function to prevent unintentional triggering. The Advanced jet gun is equipped with an integrated remote control. The ice delivery rate and blasting pressure can be adjusted directly on the spray gun. There is also a switch to choose between „air only“ or „air and ice“.	<input type="checkbox"/>	<input checked="" type="checkbox"/>	<input type="checkbox"/>
	3	4.775-785.0				
Jet gun, classic	4	4.775-794.0	Ergonomically shaped jet gun. The compact design of this spray gun makes it especially light and easy-to-use. Includes safety function to prevent unintentional triggering.	<input type="checkbox"/>	<input checked="" type="checkbox"/>	<input type="checkbox"/>
High-pressure spray nozzles						
Flat jet nozzle, 50 mm	5	4.574-033.0	Flat jet nozzle with optimised nozzle geometry. Excellent cleaning results with a high area performance.	<input checked="" type="checkbox"/>	<input type="checkbox"/>	<input type="checkbox"/>
Flat jet nozzle, 75 mm	6	4.574-054.0	Flat jet nozzle (75 mm jet width) for the Kärcher ice blaster. The innovative nozzle geometry ensures an extremely even spray pattern across the entire width during dry ice blasting.	<input type="checkbox"/>	<input type="checkbox"/>	<input type="checkbox"/>
Flat jet nozzle, 100 mm	7	4.574-056.0	Ice blaster flat jet nozzle with 100 mm jet width and new geometry. Ideal for dry ice blasting over very large areas. For an extremely even spray pattern across the entire width.	<input type="checkbox"/>	<input type="checkbox"/>	<input type="checkbox"/>
Flat jet nozzle insert, S	8	4.574-031.0	Nozzle insert for controlling the air flow.	<input type="checkbox"/>	<input type="checkbox"/>	<input type="checkbox"/>
Flat jet nozzle insert, L	9	4.574-030.0		<input checked="" type="checkbox"/>	<input type="checkbox"/>	<input type="checkbox"/>
Flat jet nozzle insert, XXL	10	4.574-032.0		<input type="checkbox"/>	<input type="checkbox"/>	<input type="checkbox"/>
Round jet nozzle, S, long	11	4.574-050.0	Efficient round jet nozzle with innovative nozzle line for outstanding cleaning performance and minimal air consumption. Ideal for stubborn dirt. Air volume index: S.	<input type="checkbox"/>	<input type="checkbox"/>	<input type="checkbox"/>
Round jet nozzle, M, long	12	4.574-048.0	Efficient round jet nozzle with innovative nozzle line for outstanding cleaning performance and minimal air consumption. Ideal for stubborn dirt. Air volume index: M.	<input type="checkbox"/>	<input type="checkbox"/>	<input type="checkbox"/>
Round jet nozzle, M, short	13	4.574-028.0	Short, extremely handy round jet nozzle for smaller areas. Air volume index: M.	<input type="checkbox"/>	<input type="checkbox"/>	<input type="checkbox"/>
Round jet nozzle, L, long	14	4.574-051.0	Efficient round jet nozzle with innovative nozzle line for outstanding cleaning performance and moderate air consumption. Ideal for stubborn dirt. Air volume index: L.	<input type="checkbox"/>	<input type="checkbox"/>	<input type="checkbox"/>
Round jet nozzle, L, short	15	4.574-029.0	Short, extremely handy round jet nozzle for medium-sized areas. Air volume index: L.	<input type="checkbox"/>	<input type="checkbox"/>	<input type="checkbox"/>
Round jet nozzle, XL, long	16	4.574-049.0	Highly effective round jet nozzle with innovative nozzle line for outstanding cleaning performance. The optimal solution for stubborn dirt. Air volume index: XL.	<input checked="" type="checkbox"/>	<input type="checkbox"/>	<input type="checkbox"/>
Round jet nozzle, XL, extra long	17	4.574-047.0	45 cm round jet nozzle with innovative nozzle line for outstanding cleaning performance. The optimal solution for extremely stubborn dirt. Air volume index: XL.	<input type="checkbox"/>	<input type="checkbox"/>	<input type="checkbox"/>
Low-pressure spray nozzles						
Flat jet nozzle, XS, short	18	4.574-040.0	Optimised nozzle geometry for extremely efficient, low-noise operation. Very short, compact nozzle. Especially well-suited for blasting in narrow areas.	<input type="checkbox"/>	<input type="checkbox"/>	<input type="checkbox"/>
Flat jet nozzle, XS, long	19	4.574-038.0	Optimised nozzle geometry for extremely efficient, low-noise operation. Excellent cleaning results with a high area performance.	<input checked="" type="checkbox"/>	<input checked="" type="checkbox"/>	<input type="checkbox"/>
Round jet nozzle, XS, short	20	4.574-039.0	Optimised nozzle geometry for extremely efficient, low-noise operation. Very short, compact nozzle. Especially well-suited for blasting in narrow areas.	<input type="checkbox"/>	<input type="checkbox"/>	<input type="checkbox"/>
Round jet nozzle, XS, long	21	4.574-037.0	Optimised nozzle geometry for extremely efficient, low-noise operation. Very powerful for stubborn dirt.	<input type="checkbox"/>	<input type="checkbox"/>	<input type="checkbox"/>
Angled nozzle, XS, flat	22	4.574-042.0	The angled nozzle deflects the spray at a 90° angle. Ideal for cleaning injection moulds.	<input type="checkbox"/>	<input type="checkbox"/>	<input type="checkbox"/>
Angled nozzle, XS, round	23	4.574-041.0		<input type="checkbox"/>	<input type="checkbox"/>	<input type="checkbox"/>
Miniature angled nozzle, 60°, XS	24	4.574-044.0	Miniature angled nozzle for cleaning in tight spaces. Deflects the blast about 60° laterally. Protrudes 57 mm to the side, length: 260 mm. The set consists of four pieces: 1× union nut, 1× extension piece, 100 mm (5.321-971.0), 1× angle piece 60° (5.321-972.0), 1× nozzle tip (5.321-977.0). Any number of extension pieces can be attached. The angle and nozzle can be ordered separately.	<input type="checkbox"/>	<input type="checkbox"/>	<input type="checkbox"/>

■ Included in scope of delivery. □ Available accessories. Further Kärcher original accessories and detergents can be found on the following pages.



		Order no.	Description	IB 15/120	IB 7/40 AGV	IB 7/40 Classic
Miniature angled nozzle, 90°, XS	25	4.574-043.0	Miniature angled nozzle for cleaning in tight spaces. Deflects the blast about 90° laterally. Protrudes 63 mm to the side, length: 240 mm. The set consists of four pieces: 1× union nut, 1× extension piece, 100 mm (5.321-971.0), 1× angle piece 90° (5.321-973.0), 1× nozzle tip (5.321-977.0). Any number of extension pieces can be attached. The angle and nozzle can be ordered separately.	<input type="checkbox"/>	<input type="checkbox"/>	<input type="checkbox"/>
Extension tube, 100 mm	26	5.321-971.0	100 mm extension tube for miniature angled nozzles (60°, 90°)	<input type="checkbox"/>	<input type="checkbox"/>	<input type="checkbox"/>
Angle piece, 90°	27	5.321-973.0	Angle piece, 90°, for all miniature angled nozzles.	<input type="checkbox"/>	<input type="checkbox"/>	<input type="checkbox"/>
Angle piece, 60°	28	5.321-972.0	Angle piece, 60°, for all miniature angled nozzles.	<input type="checkbox"/>	<input type="checkbox"/>	<input type="checkbox"/>
Replacement nozzle tip	29	5.321-977.0	Nozzle tip for all miniature angled nozzles.	<input type="checkbox"/>	<input type="checkbox"/>	<input type="checkbox"/>
Adaptor for straight mini nozzle	30	5.321-992.0	For attachment to all miniature angled nozzles. Converts a miniature angled nozzle to a straight nozzle.	<input type="checkbox"/>	<input type="checkbox"/>	<input type="checkbox"/>
Cavity nozzle, XS	31	4.574-045.0	Diameter: 22 mm. Any number of extension pieces can be attached.	<input type="checkbox"/>	<input type="checkbox"/>	<input type="checkbox"/>
Nozzle accessories						
Scrambler	32	4.574-026.0	The innovative scrambler patented by Kärcher is mounted between the spray gun and spray nozzle, and breaks down the 3 mm dry ice pellets into fine particles. This makes it possible to clean very sensitive surfaces. There are three pellet breaking force levels.	<input type="checkbox"/>	<input type="checkbox"/>	<input type="checkbox"/>
Extra scrambler	33	4.574-052.0	Additional scrambler which, together with the standard blaster, produces even finer spray particles. The extra scrambler can be installed onto the standard scrambler to save space.	<input type="checkbox"/>	<input type="checkbox"/>	<input type="checkbox"/>
Nozzle extension, XXL, 170 mm	34	4.574-027.0	170 mm nozzle extension.	<input type="checkbox"/>		
Nozzle extension, XXL, 500 mm	35	4.574-025.0	500 mm nozzle extension.	<input type="checkbox"/>		
Nozzle extension, XS, 300 mm	36	4.574-046.0	300 mm nozzle extension.	<input type="checkbox"/>		
IB 7/40 handle	37	4.321-248.0	Handle for attachment to nozzle extension (4.574-046.0, 300 mm). For convenient two-hand use.	<input type="checkbox"/>	<input type="checkbox"/>	
IB 15/120 handle	38	6.321-206.0	Handle for using nozzle extension.	<input type="checkbox"/>		
Nozzle illumination, IB 15/120	39	2.815-010.0	Nozzle light - screws on to the jet gun. For optimal illumination of the spraying area.	<input type="checkbox"/>		
Nozzle illumination, IB 7/40	40	2.815-011.0	Nozzle light - screws on to the jet gun to illuminate the working area.		<input type="checkbox"/>	<input type="checkbox"/>
Open-end wrench	41	7.815-009.0	Open-end wrench for mounting nozzles (2 required).	<input checked="" type="checkbox"/>	<input checked="" type="checkbox"/>	<input checked="" type="checkbox"/>
Grease for nozzle thread, silicone-free	42	6.288-088.0	The threads of the spray nozzles must be regularly treated with this silicone-free grease.	<input checked="" type="checkbox"/>	<input checked="" type="checkbox"/>	<input checked="" type="checkbox"/>
Intermediate piece for angle spray lances	43	4.574-034.0	Intermediate piece for all available angled spray lances. Can also be used as a flat jet nozzle insert (14 mm).	<input type="checkbox"/>		
Angled spray lance, 90°, XXL	44	4.574-035.0	90° spray lance for use with all available nozzles. Requires the use of intermediate piece 4.574-034.0.	<input type="checkbox"/>		
Angled spray lance, 105°, XXL	45	4.574-036.0	105° spray lance for use with all available nozzles. Requires the use of intermediate piece 4.574-034.0.	<input type="checkbox"/>		
Spray hose, compressed air hose						
Spray hose	46	4.013-042.0	5 m spray hose with electric control cable and quick-action couplings, non-marking outer layer, silicone-free (1/2" diameter).		<input checked="" type="checkbox"/>	<input checked="" type="checkbox"/>
	47	4.013-043.0	8 m spray hose with electric control cable and quick couplings, non-marking outer layer, silicone-free (3/4" diameter).		<input checked="" type="checkbox"/>	
Hose trolley	48	4.574-057.0	Hose reel includes all connections. This practical tool for dry ice blasting using the ice blaster is designed for 80 m long compressed air hoses with a diameter of 1".	<input type="checkbox"/>	<input type="checkbox"/>	<input type="checkbox"/>
Compressed air hose, 1", 5 m	49	6.574-279.0	Very light, shape-retaining compressed air hose (1", 5 m) for the ice blaster. Ideal for connecting the hose drum with the compressor.	<input type="checkbox"/>	<input type="checkbox"/>	<input type="checkbox"/>
Compressed air hose, 1", 20 m	50	6.574-280.0	Very light, shape-retaining compressed air hose (1", 20 m) for the ice blaster. Once the dry ice blasting is finished, the hose can be wound up again neatly on the Kärcher hose reel.	<input type="checkbox"/>	<input type="checkbox"/>	<input type="checkbox"/>



51



52-53



55-57



59



60



61



62

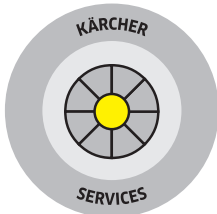
		Order no.	Description	IB 15/120	IB 7/40 Adv	IB 7/40 Classic	IP 220	IP 120	IP 55
Compressed air hose, 1", 60 m	51	6.574-281.0	Very light, shape-retaining compressed air hose (1", 60 m) for the ice blaster. Once the dry ice blasting is finished, the hose can be wound up again neatly on the Kärcher hose reel.	<input type="checkbox"/>	<input type="checkbox"/>	<input type="checkbox"/>			
Compressed air hose, 10 m	52	6.390-284.0	3/4".	<input type="checkbox"/>	<input type="checkbox"/>	<input type="checkbox"/>			
Compressed air hose, 20 m	53	6.390-285.0		<input type="checkbox"/>	<input type="checkbox"/>	<input type="checkbox"/>			
Protective foil for IB spray hose, 100 m	54	6.667-214.0	100-m roll of hose foil. Protects the spray hose from dirt and damage. A damaged foil can easily be replaced.	<input type="checkbox"/>	<input type="checkbox"/>	<input type="checkbox"/>			
Protective gear									
Safety goggles	55	6.321-208.0	Safety goggles.	<input type="checkbox"/>	<input type="checkbox"/>	<input type="checkbox"/>			
Protective gloves	56	6.321-210.0	Protective gloves.	<input type="checkbox"/>	<input type="checkbox"/>	<input type="checkbox"/>			
Hearing protection	57	6.321-207.0	Hearing protection.	<input type="checkbox"/>	<input type="checkbox"/>	<input type="checkbox"/>			
Attachment kits and other accessories									
Y adaptor, air supply	58	2.641-880.0	Y adaptor for connecting the air hose to two 1/4" quick coupling connections.	<input type="checkbox"/>	<input type="checkbox"/>	<input type="checkbox"/>			
Coiled earth cord	59	2.641-741.0	Automatic coiled earth cord with about 6 m grounding cable and sturdy clamp. The grounding cable retractor reliably prevents static build-up on the object being blasted and prevents arcing between the object and nozzle.		<input checked="" type="checkbox"/>	<input type="checkbox"/>			
Shovel	60	4.321-198.0	For filling the ice blaster's tank with dry ice pellets.	<input type="checkbox"/>	<input type="checkbox"/>	<input type="checkbox"/>			
Dry ice box, 25 kg	61	5.574-054.0	Polystyrene, white.	<input type="checkbox"/>	<input type="checkbox"/>	<input type="checkbox"/>	<input type="checkbox"/>	<input type="checkbox"/>	<input type="checkbox"/>
Dry ice box, 100 kg	62	5.574-053.0	Expanded polypropylene (EPP), black.	<input type="checkbox"/>	<input type="checkbox"/>	<input type="checkbox"/>	<input type="checkbox"/>	<input type="checkbox"/>	<input type="checkbox"/>
Pelletizer									
Extruder plate, 3 mm	63	6.574-046.0	High-quality extruder plate for producing 3 mm dry ice pellets.						<input checked="" type="checkbox"/>
	64	6.574-061.0							<input checked="" type="checkbox"/>
	65	6.574-001.0						<input checked="" type="checkbox"/>	
Extruder plate, 1.7 mm	66	6.574-200.0	This extruder plate produces dry ice pellets with a 1.7 mm diameter.					<input type="checkbox"/>	
Extruder plate, 16 mm	67	6.574-060.0	High-grade extruder plate for producing 16 mm dry ice nuggets.					<input type="checkbox"/>	
	68	6.574-002.0					<input type="checkbox"/>		
	69	6.574-045.0							<input type="checkbox"/>
CO ₂ detector with sensor	70	6.574-105.0	The CO ₂ detector indicates the CO ₂ concentration in the air. This attachment kit includes a CO ₂ detector and a CO ₂ sensor. Since CO ₂ gas is heavier than air, the CO ₂ sensor should be installed at the lowest point of the building.				<input type="checkbox"/>	<input type="checkbox"/>	<input type="checkbox"/>
Weighing unit 800×600	71	6.574-198.0	Production control system for automatic filling. The pelletizer can be set to a certain production volume using the weighing unit. The pelletizer starts dry ice production automatically and stops as soon as the precise amount of dry ice has been produced. It produces the precise filling quantity. This attachment kit is ideal for automation of the dry ice blasting process as the tank of the ice blaster is directly filled.					<input type="checkbox"/>	<input type="checkbox"/>
	72	6.574-179.0						<input type="checkbox"/>	<input type="checkbox"/>
Weighing unit 1000×1000	73	6.574-180.0					<input type="checkbox"/>	<input type="checkbox"/>	
Timer module	74	6.574-178.0	Production control system for automatic filling. The timer module can be used to set the pelletizer to run for a specific time. The pelletizer automatically stops dry ice production when the set time has elapsed.				<input type="checkbox"/>		
	75	6.574-181.0						<input type="checkbox"/>	
	76	6.574-197.0							<input type="checkbox"/>

■ Included in scope of delivery. □ Available accessories.



YOU MANAGE YOUR BUSINESS. WE PROVIDE THE SUPPORT.

Things can be much easier when people combine their talents. Pursuing goals together, complementing one another and learning from each other makes it so much easier to achieve success. One could call it the principle of progress. We call it Kärcher Services. A promise of partnership. By professionals for professionals.



Kärcher Services:
The complete range of services from a world market leader. And the perfect continuation of the advanced Kärcher systems with innovative tools, a tailored range of services and efficient software solutions.



Kärcher Fleet - Fleet management
 Branch-specific data acquisition and evaluation. Evaluation of machine data enables the documentation of services provided to clients as well as business planning and evaluation.



Kärcher Service - Customer service
 Service means trust. Anytime. Services you really need. Fast reaction for maximum availability. Maximum value retention and compliance with all statutory requirements.



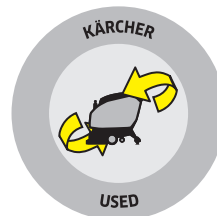
Kärcher Lease - Leasing
 Tailor-made. Flexible. Safe. We provide the flexibility you need: with leasing and financing models to suit every need.



Kärcher Rent - Rental
 Precisely the machine you need. Renting instead of buying. And get more: know-how and the Kärcher Full service package.



Kärcher Maintain - Service packages
 Every service package is exactly tailored to suit specific needs. Services include inspections as part of mandatory safety checks, timely maintenance and flat-rate full service.



Kärcher Used - Used machines
 If used is what you need. New start-up? Or just saving costs? We have the right used machine for you. Used, refurbished, reliable, good and affordable. Our range constantly changing. Just ask us.



Kärcher ECO!Manager - Facility Management
 The innovative web application for real-time recording of all facility management activities on site. Paperless mobile documentation. Recorded data is available directly in the system.

Please contact us for more information:

Head Office Germany

Alfred Kärcher GmbH & Co. KG
Alfred-Kärcher-Straße 28-40
71364 Winnenden

Phone +49 7195-14-0
Fax +49 7195-14-2212

www.kaercher.com

North America

Kärcher North America
4555 Airport Way
Denver, CO 80239
U.S.A.

Phone +1 303-738-5805
Fax +1 303-865-2758

www.karcherna.com

United Kingdom

Kärcher (UK) Ltd.
Kärcher House
Beaumont Road
Banbury
Oxon OX16 1TB

Phone +44 1295-752-100
Fax +44 1295-752-103

www.karcher.co.uk

Ireland

Kärcher Ltd.
Unit 4
E.P. Mooney Business Park
Walkinstown Avenue
Dublin 12

Phone +353 1-409-7777
Fax +353 1-409-7775

www.karcher.ie

Southeast Asia

Regional Head Office
Southeast Asia

Kärcher South East Asia Pte. Ltd.
3 Depot Close #01-01
Singapore 109840

Phone +65 6897 18 11
Fax +65 6897 16 11

www.karcher.com.sg

Hong Kong

Kärcher Limited
Unit 05, 13/F, Nanyang Plaza
57 Hung To Road
Kwun Tong, Kowloon

Phone +852 2-357-5863
Fax +852 2-357-5632

www.karcher.com.hk

Australia

Kärcher Pty. Ltd.
40 Koornang Road
Scoresby VIC 3179
Melbourne, Victoria

Phone +61 3-9765-2300
Fax +61 3-9765-2398

www.karcher.com.au

New Zealand

Kärcher Ltd.
66 Allens Road
East Tamaki
Auckland 2013

Phone +64 9-274-4603
Fax +64 9-274-6932

www.karcher.co.nz

South Africa

Kärcher (Pty) Ltd.
Cnr. Mount Joy & George Allen Rd.
Wilbart Ext. 2
P.O. Box 11818
Vorna Valley, 1686

Phone +27 11 657 7300
Fax +27 11 657 7440

www.karcher.co.za

Dubai

Kärcher FZE
Quality Cleaning Systems
Jebel Ali Free Zone
Plot No. S-10104 South Zone
RA 08, XB 1, Jebel Ali

Phone +971 4-886-1177
Fax +971 4-886-1575

www.kaercher.com