

KÄRCHER

makes a difference



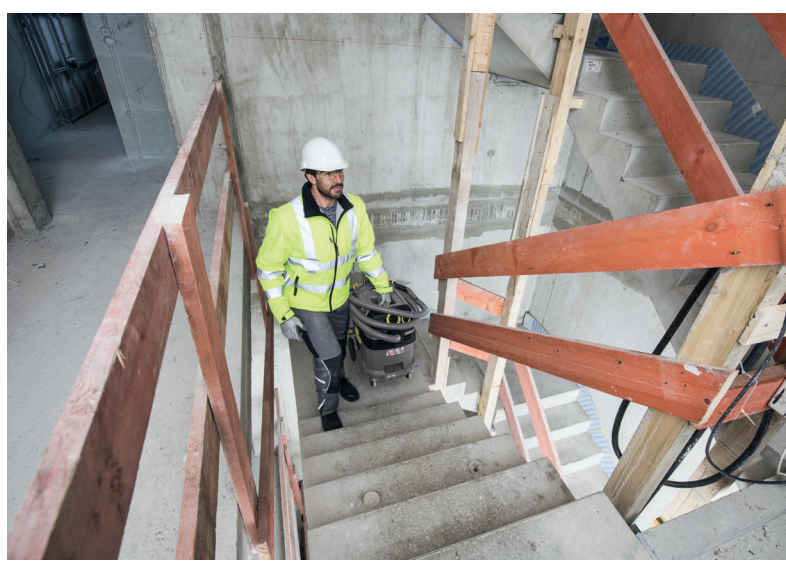
PERFORMANCE THAT KNOWS NO BOUNDARIES

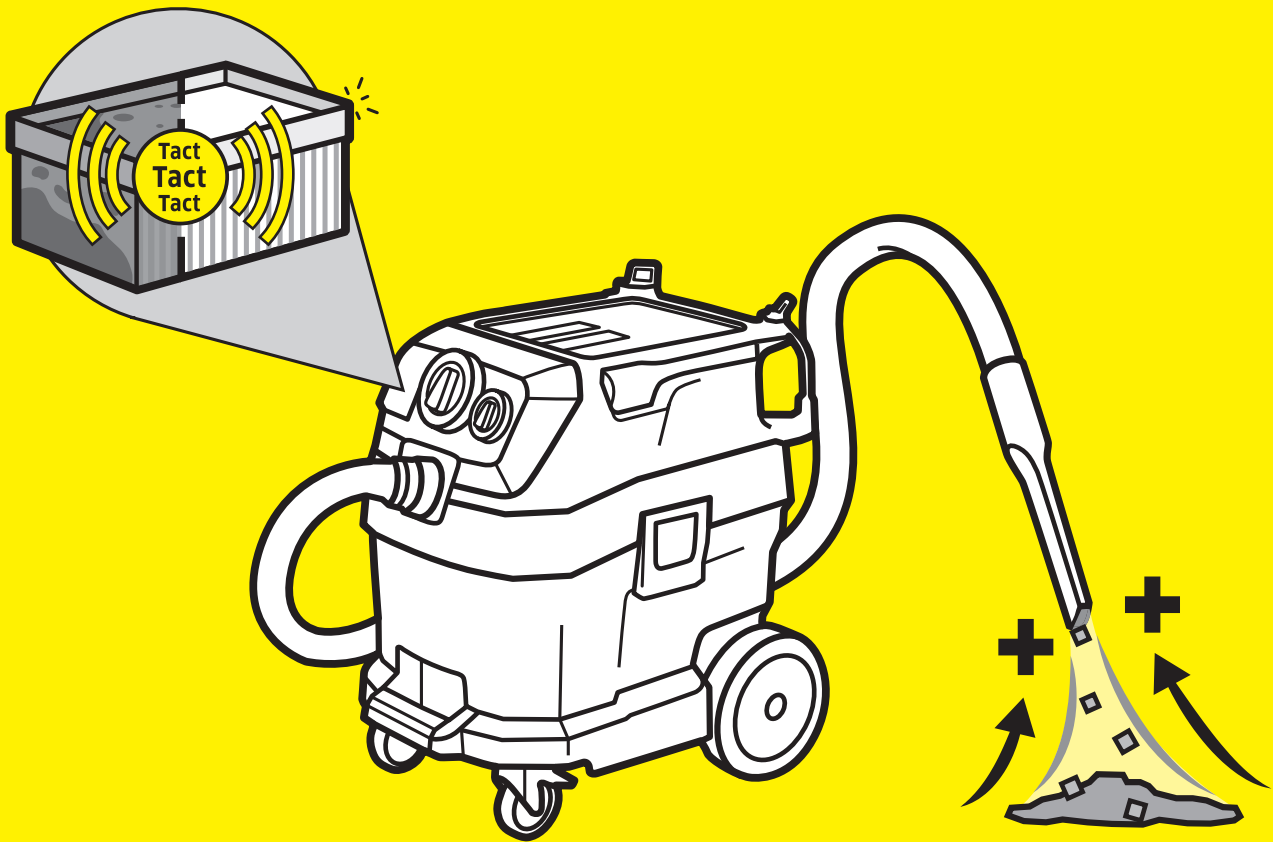
Experience the most powerful and robust NT Tact vacuum cleaner of all time.

IS THE BEST GOOD ENOUGH FOR YOU?

Do you place high demands on the work you do? If so, our new wet and dry vacuum cleaners with improved Tact automatic filter cleaning system are the perfect choice for you. With robust components and incomparable suction power, our Tact vacuum cleaners deliver maximum performance everywhere. In addition, they are more robust, mobile and quieter. The new accessory system offers greater performance and easier handling. With the innovative bayonet and clip connections, connecting the vacuum cleaner and all accessory parts is now even easier and safer. No matter how far you want to go, your NT Tact will take you further.







SIMPLY A QUESTION OF Tact

Fine dust is dangerous to health. To ensure that you have the best protection against fine dust, we have made our Tact system even better. The result is a powerful Tact vacuum cleaner with highly efficient filter cleaning and a worldwide unique filter service life of 180 kg fine dust (mineral dust category A) until the filter needs to be cleaned manually. This results in even longer periods of uninterrupted operation with constant suction power and better protection against fine dust.

Filter service life when vacuuming fine dust with the NT 30/1 Tact Te L

Suction waste: Mineral dust Category A

Temperature: Room temperature

Accessories: Main filter and hoses included in delivery

Competitor machines: Comparable container size and equipment

Test results of the maximum quantity that can be vacuumed until the main filter needs to be cleaned manually or replaced:

Kärcher NT 30/1 Tact Te L: 180 kg

Competitor A: 19 kg

Competitor B: 10 kg

ROBUST CAN ALSO BE PRACTICAL.

Innovation starts in the mind. Our new Tact wet and dry vacuum cleaners feature a central EASY Operation switch for convenient single-button operation of the various functions and operating modes.

The hose connection has also been placed in the machine head in order to achieve a large net volume, easy handling and longer work intervals. Tool boxes and other implements can be placed securely on the flat container head with rubberised storage space and fixed with lashing eyes.

Perfectly equipped for construction sites

In order to cope with the sometimes harsh environments on construction sites, our NT Tact vacuum cleaners now have robust, reinforced containers with a bumper, handles and large, sturdy metal castors with brakes.

Make way for high performance

Our Tact vacuum cleaners come with suction hoses with 35 mm inner diameter (DN 35) as standard. This larger inner diameter increases the air flow and reduces the risk of blockages when vacuuming coarse dirt.

Flat, protected and always correct

All new Tact vacuum cleaners have a filter casing for flat pleated filters. The old filter can be removed dust-free. The filter is always inserted correctly and the filter medium and seal are protected. In addition, our Tact vacuum cleaners are all dust class L certified, which means that they have a dust separation efficiency of 99% according to EN 60335-2-69. You will be amazed what a difference this will make on your construction site.



YOUR WISHES HAVE COME TRUE.



Your NT Tact will make you perfectly happy. You will see that we have thought of everything that is important for professional operators: the superior suction power, simple operation, robustness and durability, the more efficient and even quieter Tact filter cleaning system. And accessories that fulfil all your wishes in terms of versatility and function.

1 Easy single-button operation

The new central EASY Operation switch enables convenient selection between three vacuum functions: Tact Max. for maximum cleaning performance for fine dust application; Tact Min. for medium to small dust quantities, and vacuuming without Tact, e.g. for water.

2 Suction hose connection in the machine head

Our new NT Tact vacuum cleaners have the suction hose directly in the machine head. This increases the usable container volume and makes emptying much easier.

3 Robust containers with easy handling

The particularly robust containers of our wet and dry vacuum cleaners have an outer bumper, which protects against damage, and practical recessed handles for easier handling.

4 Flat machine head with storage

The flat machine head of our new NT Tact machines is rubberised. It can be used to store tool boxes and other implements without slipping. In addition, the stored box can be fastened securely with a standard lashing strap for transport.

5 Hoses and cord securely stowed

Hoses up to 4 metres long and a diameter of 40 mm and the NT Tact rubber power cord can be fixed securely to the machine using sturdy rubber straps.

6 Accessories securely stowed

Practical, secure storage on the machine for accessories such as the crevice nozzle and tool adapter ensures that all accessories are always at hand.

7 Stability and maximum mobility

Large, sturdy steel castors give our NT Tact stability on any surface and maximum mobility.

8 Power outlet with automatic on/off switch

All NT Tact Te machines have a power outlet with automatic on/off switch. When a power tool is connected to the vacuum cleaner, the vacuum cleaner switches on and off again automatically when the connected power tool is switched off.

Internal, not visible:

9 The improved Tact system

With the new improved Tact system, work can be carried out without interruption even with large quantities of fine dust. The filter cleans itself regularly with targeted, powerful blasts of air, and high suction power is maintained at all times. This offers the benefit of lower maintenance costs and a longer filter service life. The new Tact also works more efficiently.

10 Antistatic preparation

Our NT Tact vacuum cleaners are earthed from suction hose port to the mains plug as standard. In combination with the optionally available conductive accessories, this provides extensive protection against electrostatic charge.

11 Filter casing

With the new filter casing, the main filter can be removed dust-free and cleaned manually. Incorrect insertion is not possible.

BETTER THROUGH EXPERIENCE

Our range of wet and dry vacuum cleaners is based on decades of experience. And that of many professional users. We have developed our new NT Tact machines together with tradesmen, industrial operators, vehicle finishers and other occupational groups to ensure that you have an NT Tact for every purpose and application.



NT 50/1 Tact Te L

**NT 40/1 Tact Te L
(with optional push handle)**

**NT 30/1 Tact Te L und NT 30/1 Tact L
(without power outlet)**

NT 50/1 Tact Te L

- Adjustable push handle
- Drain hose
- Antistatic preparation

Technical Data

| | | |
|---|------------|-------------------|
| Air flow | l/s | 74 |
| Vacuum | mbar / kPa | 254 / 25.4 |
| Container capacity | l | 50 |
| Max. rated input power | W | 1,380 |
| Voltage | V | 220-240 |
| Standard nominal width | | DN 35 |
| Rubber power cable length | m | 7.5 |
| Sound pressure level EN 60335-2-69 Uncertainty K = 1 dB(A) | dB(A) | 68 |
| Weight | kg | 18.3 |
| Dimensions (L × W × H) | mm | 640 × 370 × 1,045 |

Equipment

| | | |
|--|----|---------------|
| Suction hose | m | 4 / with bend |
| Suction pipe, stainless steel 2 × 0,55 m | | ■ |
| Filter bag | | Fleece |
| Wet and dry floor nozzle | mm | 360 |
| Crevice tool | | ■ |
| Power tool connection adapter | | ■ |
| Order No. | | 1.148-411.0 |
| Price | | |

- Included in delivery.

NT 40/1 Tact Te L

- PES flat pleated filter
- Antistatic preparation
- Optional push handle

Technical Data

| | | |
|---|------------|-----------------|
| Air flow | l/s | 74 |
| Vacuum | mbar / kPa | 254 / 25.4 |
| Container capacity | l | 40 |
| Max. rated input power | W | 1,380 |
| Voltage | V | 220-240 |
| Standard nominal width | | DN 35 |
| Rubber power cable length | m | 7.5 |
| Sound pressure level EN 60335-2-69 Uncertainty K = 1 dB(A) | dB(A) | 68 |
| Weight | kg | 14.4 |
| Dimensions (L × W × H) | mm | 560 × 370 × 655 |

Equipment

| | | |
|--|----|---------------|
| Suction hose | m | 4 / with bend |
| Suction pipe, stainless steel 2 × 0,55 m | | ■ |
| Filter bag | | Fleece |
| Wet and dry floor nozzle | mm | 360 |
| Crevice tool | | ■ |
| Power tool connection adapter | | ■ |
| Order No. | | 1.148-311.0 |
| Price | | |

- Included in delivery.

NT 30/1 Tact Te L

- PES flat pleated filter
- Antistatic preparation
- Auto-start feature (for power tools)

Technical Data

| | | |
|---|------------|-----------------|
| Air flow | l/s | 74 |
| Vacuum | mbar / kPa | 254 / 25.4 |
| Container capacity | l | 30 |
| Max. rated input power | W | 1,380 |
| Voltage | V | 220-240 |
| Standard nominal width | | DN 35 |
| Rubber power cable length | m | 7.5 |
| Sound pressure level EN 60335-2-69 Uncertainty K = 1 dB(A) | dB(A) | 69 |
| Weight | kg | 13.6 |
| Dimensions (L × W × H) | mm | 560 × 370 × 580 |

Equipment

| | | |
|--|----|---------------|
| Suction hose | m | 4 / with bend |
| Suction pipe, stainless steel 2 × 0,55 m | | ■ |
| Filter bag | | Fleece |
| Wet and dry floor nozzle | mm | 360 |
| Crevice tool | | ■ |
| Power tool connection adapter | | ■ |
| Order No. | | 1.148-211.0 |
| Price | | |

- Included in delivery.

NT 30/1 Tact L

- PES flat pleated filter
- Metal castors
- Antistatic preparation

Technical Data

| | | |
|---|------------|-----------------|
| Air flow | l/s | 74 |
| Vacuum | mbar / kPa | 254 / 25.4 |
| Container capacity | l | 30 |
| Max. rated input power | W | 1,380 |
| Voltage | V | 220-240 |
| Standard nominal width | | DN 35 |
| Rubber power cable length | m | 7.5 |
| Sound pressure level EN 60335-2-69 Uncertainty K = 1 dB(A) | dB(A) | 69 |
| Weight | kg | 13.5 |
| Dimensions (L × W × H) | mm | 560 × 370 × 580 |

Equipment

| | | |
|--|----|---------------|
| Suction hose | m | 4 / with bend |
| Suction pipe, stainless steel 2 × 0,55 m | | ■ |
| Filter bag | | Fleece |
| Wet and dry floor nozzle | mm | 360 |
| Crevice tool | | ■ |
| Power tool connection adapter | | - |
| Order No. | | 1.148-201.0 |
| Price | | |

- Included in delivery.

INNOVATION IN A SYSTEM

Every machine is only as good as its accessories. We have redesigned the accessories for our new NT Tact vacuum cleaners from scratch and developed a new system in which everything fits together perfectly.



1 Ergonomic bend

With soft components for the handle, the bend always fits securely and comfortably in the hand.

2 Improved clip system

Thanks to the new clip system with a wide push-button, accessories are very easy to change, for example from bend to tool adapter.

3 Dirt-resistant bayonet closure

The new bayonet closure ensures easy and safe connection and separation of hose and machine – even under extremely dusty conditions.

4 Tool sleeve with false air valve and rubber attachment

For optimal power tool compatibility. The new sleeve for connecting power tools ensures perfect dust suction. With the rotating ring, the suction performance can be regulated directly on the sleeve.

5 Wide floor nozzle

Change between wet and dry vacuuming in seconds: all NT Tact vacuum cleaners have the new floor nozzle with quick change inserts for wet and dry use on board as standard.



| Name | Order No. | Description |
|------------------------------------|-------------|---|
| Fleece filter bags | 2.889-155.0 | Fleece filter bag with 40-50 litre volume. Tear-resistant, dust class M for suction hose port in machine head. |
| Fleece filter bags | 2.889-154.0 | Fleece filter bag with 30 litre volume. Tear-resistant, dust class M for suction hose port in machine head. |
| Plastic bag for dust-free disposal | 2.889-158.0 | PE plastic bag for dust-free disposal. |
| PES flat pleated filter | 6.904-360.0 | Polyester fleece, rot-proof, dust class M approved. |
| PTFE flat pleated filter | 6.907-455.0 | Polyester fleece with PTFE coating for single-motor Tact and Ap vacuum cleaner, dust class M approved. Particularly suitable for strongly adhering materials. |
| Flat pleated filter, paper | 6.904-367.0 | Paper, dust class M approved. |



| Name | Order No. | Description |
|---------------------------------------|-------------|--|
| Suction hose | 2.889-134.0 | 2.5 m suction hose with new bayonet and clip closure. |
| Suction hose | 2.889-135.0 | 4 m suction hose with new bayonet and clip closure. |
| Suction hose, electrically conductive | 2.889-136.0 | Electrically conductive suction hose with new bayonet and clip closure. Length: 2.5 m. |
| Suction hose, electrically conductive | 2.889-137.0 | 4 m suction hose with new bayonet and clip closure. Electrically conductive. |



| Name | Order No. | Description |
|--|-------------|--|
| Bend Adv | 2.889-170.0 | Ergonomic bend for the new clip system. |
| Bend Adv, electrically conductive | 2.889-168.0 | Ergonomic bend for the new clip system. |
| Tool adapter DN 35, clip-on | 2.889-151.0 | Tool adapter with false air valve. |
| Wet and dry floor nozzle Adv for DN 35 | 2.889-152.0 | 360 mm wide wet and dry floor nozzle with easy-change inserts. Including brush strips and squeegees. |

Please contact us for more information:

Head Office Germany

Alfred Kärcher GmbH & Co. KG
Alfred-Kärcher-Straße 28-40
71364 Winnenden

Phone +49 7195-14-0
Fax +49 7195-14-2212

www.kaercher.com

North America

Kärcher North America
4555 Airport Way
Denver, CO 80239
USA

Phone +1 303-738-5805
Fax +1 303-865-2758

www.karcherna.com

United Kingdom

Kärcher (UK) Ltd
Kärcher House
Brookhill Way
Banbury
Oxon OX16 3ED

Phone +44 1295-752-000
Fax +44 1295-752-103

www.karcher.co.uk

Ireland

Kärcher Ltd
Unit 4
E.P. Mooney Business Park
Walkinstown Avenue
Dublin 12

Phone +353 1-409-7777
Fax +353 1-409-7775

www.karcher.ie

South East Asia

Regional Head Office
South East Asia
Kärcher South East Asia Pte Ltd
3 Depot Close #05-01
Singapore 109840

Phone +65 6897-1811
Fax +65 6897-1611

www.karcher.com.sg

Hong Kong

Kärcher Limited
Unit 05, 13/F, Nanyang Plaza
57 Hung To Road
Kwun Tong, Kowloon

Phone +852 2-357-5863
Fax +852 2-357-5632

www.karcher.com.hk

Australia

Kärcher Pty Ltd
40 Koornang Road
Scoresby VIC 3179
Melbourne, Victoria

Phone +61 3-9765-2300
Fax +61 3-9765-2398

www.karcher.com.au

New Zealand

Kärcher Ltd
66 Allens Road
East Tamaki
Auckland 2013

Phone +64 9-274-4603
Fax +64 9-274-6932

www.karcher.co.nz

South Africa

Kärcher (Pty) Ltd
Cnr Mount Joy & George Allen Rd
Wilbart Ext. 2
PO Box 11818
Vorna Valley, 1686

Phone +27 11-657-7300
Fax +27 11-657-7440

www.karcher.co.za

Dubai

Kärcher FZE
Quality Cleaning Systems
Jebel Ali Free Zone
Plot No. S-10104 South Zone
RA 08, XB 1, Jebel Ali

Phone +971 4-886-1177
Fax +971 4-886-1575

www.kaercher.com