

# KÄRCHER

makes a difference

## SPRING OFFERS FROM THE CLEANING EXPERTS.

PROFESSIONAL | 2017 PROMOTION  
VALID FROM APRIL 1<sup>ST</sup> UNTIL JUNE 30<sup>TH</sup> 2017

### CARPET & UPHOLSTERY SPRAY EXTRACTION CLEANER

Puzzi 10/1 Adv

- Powerful and convenient spray extraction cleaner delivering 1 bar spray pressure
- Revolutionary flexible floor tool features a pivoting lip to ensure maximum contact to the surface being cleaned, reducing the amount of moisture left in fibres by up to 30%
- Large 10 litre tank, reduces down time for re-fills

CLAIM  
£25  
CASH  
BACK



### CARPET & UPHOLSTERY SPRAY EXTRACTION CLEANER

Puzzi 30/4

- Large area spray extraction cleaner delivering 4 bar spray pressure
- Integrated power outlet enables flexible use of the PW without an additional power source
- Using an optional PW 30/1 will increase the cleaning performance which cleans deep into your carpet pile with a rotating brush and aligns it in one direction
- Removable 30 litre dirty water container which can also be used to fill the clean water tank prior to use

CLAIM  
£25  
CASH  
BACK



SSP  
£ 453.00

FROM  
£ 3.50 p/w

CLAIM £25 CASH BACK +  
RM 769 UNIVERSAL STAIN  
REMOVER + RM 760  
DETERGENT TABLETS\*\*

\*\*Visit [www.karcher.co.uk/claim](http://www.karcher.co.uk/claim) for more information

SSP  
£ 1,299.00

FROM  
£ 9.30 p/w

shown with optional PW 30/1

### INTERIM CARPET CLEANER

BRS 43/500

- Provides fast, exceptional and highly effective results for interim cleaning
- Sprays the carpet with water and detergent using Kärcher iCapsol technology, then agitates with counter-rotating brushes
- Dirt particles are encapsulated to separate them from the carpet fibres allowing simple vacuuming once dry

SSP  
£ 1,921.00

FROM  
£ 13.75 p/w

Claim  
FREE  
iCapsol & CV 30/1  
Vacuum Cleaner  
worth £380.00

### DEEP CARPET CLEANER

BRC 30/15 C

- Constant roller brush pressure, provides agitation and revives carpet pile
- Integrated 15 litre clean and 17 litre dirty water tanks
- Compact for easy and convenient storage

SSP  
£ 1,727.00

FROM  
£ 12.35 p/w



## STEAM CLEANER

### SG 4/4 (240V & 110V)

- Hygienic cleaning without the need for chemicals; protects both the operator and the surfaces treated from aggressive cleaning agents.
- Certified to kill 99.999%\* of bacteria without the need for chemicals
- Continuously refillable tank prevents work interruptions by allowing non-stop cleaning
- VapoHydro function allows the steam level to be adjusted to the cleaning task. Both steam pressure and saturation level can be adjusted from full steam to hot water. With the hot water jet, even stubborn dirt can be effectively dissolved

SSP  
£ **649.00**

FROM  
£ **4.65 p/w**

CLAIM  
£50  
CASH  
BACK



KILLS 99.999%  
BACTERIA WITHOUT  
CHEMICALS



## STEAM GENERATING VACUUM

### SGV 8/5

- Cleans and recovers in a single pass
- ecoefficiency mode reduces power consumption and noise output
- EASY operation one-turn switch with self-explanatory symbols
- Continuous operation thanks to the large twin tanks
- Operates at 8 bar pressure
- Unique self-cleaning system and chemical dosage enables the machine to be used in multiple areas without the risk of cross-contamination

SSP  
£ **2,850.00**

FROM  
£ **20.35 p/w**

CLAIM  
£100  
CASH  
BACK



eco!efficiency

KILLS 99.999%  
BACTERIA WITHOUT  
CHEMICALS



## WALK-BEHIND VACUUM SWEEPER

### KM 75/40 W

- Ergonomic 750mm working width sweeper, with 40 litre waste container
- On-board traction drive allows for easy cleaning of medium-sized areas
- Container features ergonomic handles and wheels for easy emptying
- Available with maintenance-free batteries or high performance Honda engine, for long operating times - indoors or outdoors.

Ask your Kärcher representative for more details



SSP FROM  
£ **2,899.00**

FROM  
£ **20.75 p/w**



## WALK-BEHIND BATTERY-POWERED SWEEPER

### KM 70/30 C Bp Adv

- 700mm working width and 30 litre waste container which is very easy to empty
- Electrically powered main roller brush and side brush to make pushing easier and increase productivity. Brushes are also adjustable to suit different surfaces
- The machine also features an integrated extraction system for dust free applications

SSP  
£ **1,434.00**

FROM  
£ **10.25 p/w**



\*Accordant to prEN 16615, PVC floor, Test-germ: Enterococcus hirae ATCC 10541 SG 4/4 (Floor nozzle with lamellae, 30 cm/sec., steam pressure maximum, VapoHydro minimum)



## COMPACT SCRUBBER DRIER

### BR 40/10 C (240V & 110V)

- Designed for heavy-duty cleaning of small to medium areas with adjustable brush pressure for cleaning different floor types
- Two counter-rotating brushes and front and rear squeegees deliver easy and efficient cleaning and ensure floors are thoroughly cleaned and dried in a single pass
- The vacuum system can be turned on or off independently so that the machine can be used for deep cleaning of heavily soiled floors, where more scrubbing and detergent are needed

SSP  
£ 1,499.00

JUST ADD WATER\* FROM  
£ 20.00 p/w



## COMPACT SCRUBBER DRIER

### BD 30/4 C Bp

- The squeegee blade is mounted directly behind the brush head and rotates automatically, meaning optimal suction in turns and curves
- Single pass cleaning can take place in forward and reverse direction
- The compactness provides an extremely comfortable machine to manoeuvre, with the folding handle means it can be easily stored away without taking too much space
- Long life Li-ion battery

SSP  
£ 1,499.00

JUST ADD WATER\* FROM  
£ 25.00 p/w



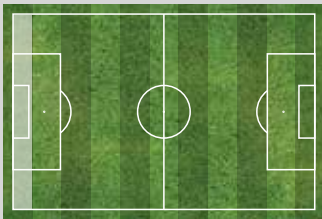
NEW



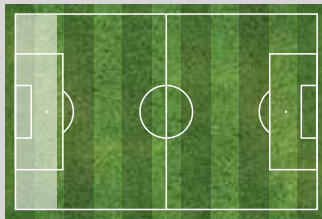
eco!efficiency

### Theoretical Cleaning Performance (m<sup>2</sup>/h)

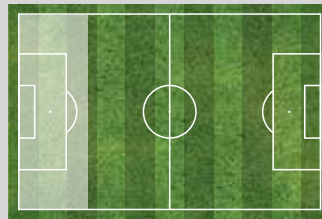
BR 40/10 C  
400 m<sup>2</sup>/h



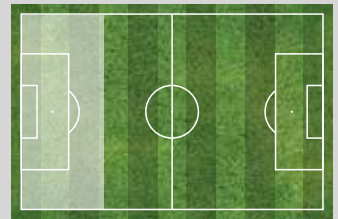
BD 30/4 C Bp  
900 m<sup>2</sup>/h



BD 38/12 C Bp  
1500 m<sup>2</sup>/h



BR 45/22 C Bp  
1800 m<sup>2</sup>/h



## COMPACT SCRUBBER DRIER

### BD 38/12 C Bp

- 12 litre clean and dirty water tanks with 380mm disc working width
- Reliable disc technology for great cleaning effects on smooth surfaces, suitable for use with either brushes or pads
- Long life Li-ion battery

SSP  
£ 2,499.00

JUST ADD WATER\* FROM  
£ 34.00 p/w



## COMPACT SCRUBBER DRIER

### BR 45/22 C Bp

- 22 litre clean and dirty water tanks with 450mm brush working width
- Kärcher's eco!efficiency mode reduces noise levels, energy and water consumption, which results in greater run times and the ability to use the machine in noise sensitive areas
- Brush head can be rotated by up to 200 degrees in either direction for exceptional manoeuvrability and cleaning performance
- Long life lithium-ion battery with on board charger

SSP  
£ 4,579.00

JUST ADD WATER\* FROM  
£ 52.00 p/w



NEW



eco!efficiency

Claim  
FREE  
Manual  
Cleaning Kit  
worth £119.00



## TOTAL COST FLOORCARE SOLUTIONS FROM KÄRCHER.

**3 YEARS' WARRANTY**  
Our extended 3 year warranty includes spare parts, accessories, batteries and battery chargers.



**3 YEARS' SERVICING**  
Our nationwide network of skilled engineers provide fast, efficient service visits to protect and maintain your machine and keep you cleaning.



**3 YEARS' CONSUMABLES**  
Maintain ultimate floorcare performance - we'll provide the consumables including detergents, brushes and squeegees.

**ONE FIXED  
REGULAR  
PAYMENT**

ASK YOUR KÄRCHER REPRESENTATIVE FOR DETAILS

BR 40/10 C £20.00 P/W Based on: Red Brushes, Standard Squeegees, 1% RM 69, 3 Tanks Per Week, 200hrs per year  
BD 38/12 C Bp £34.00 P/W Based on: 2.5l RM 756 FloorPro Multi Cleaner, 0.5% Dose, 5 Full Tanks per week, 200hrs per year

BD 30/4 C Bp £25.00 P/W Based on: 2.5l RM 756 FloorPro Multi Cleaner, 0.5% Dose, 5 Full Tanks per week, 200hrs per year  
BR 45/22 C £52.00 P/W Based on: 2.5l RM 756 FloorPro Multi Cleaner, 0.5% Dose, 5 Full Tanks per week, 400hrs per year

## WALK-BEHIND SCRUBBER DRIERS

### B 40 W & B 60 W

- 40 or 60 litre water tanks and a working width of up to 650mm (B 60 W)
- Kärcher Intelligent Key system, allows each operator to have their own customisable key with individual settings
- Machine speed, detergent dosing, brush pressure and water quantity settings can be pre set and locked by supervisors
- eco!efficiency mode reduces power consumption resulting in longer running times and lower noise levels
- Auto Rinse enables the machine to self clean its tank after operation
- AutoFill lets the operator fill the fresh water tank unattended as the water supply is automatically cut off once the tank is full
- Multiple configurations available to match your exact cleaning requirements
- **Ask your Kärcher representative about Just Add Water**


**JUST ADD WATER\*** FROM **£ 62.00 p/w**


**JUST ADD WATER\*** FROM **£ 91.00 p/w**

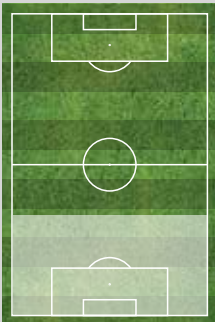


B 40 W £62.00 P/W Based on: 2.5l RM 756 FloorPro Multi Cleaner, 0.5% Dose, 5 Full Tanks per week, 400hrs per year  
 B 60 W £91.00 P/W Based on: 2.5l RM 756 FloorPro Multi Cleaner, 0.5% Dose, 5 Full Tanks per week, 600hrs per year

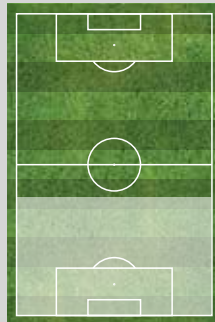
  
**eco!efficiency**

### Theoretical Cleaning Performance (m<sup>2</sup>/h)

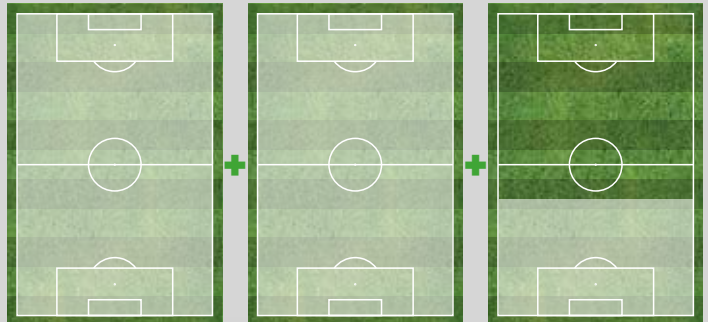
**B 40 W**  
2200 m<sup>2</sup>/h



**B 60 W**  
2600 m<sup>2</sup>/h



**B 300**  
16550 m<sup>2</sup>/h



## RIDE-ON COMBINATION SWEEPER-SCRUBBER

### B 300

- Ride-on combination sweeper scrubber which performs two tasks simultaneously
- Highly agile and manoeuvrable machine with a working width of up to 1.75m which excels at large area cleaning
- Powerful and robust LPG and diesel engines for indoor and outdoor operation
- 300 litre fresh/dirty water tanks for long operating periods

**SSP FROM**  
**£ 49,999.00**

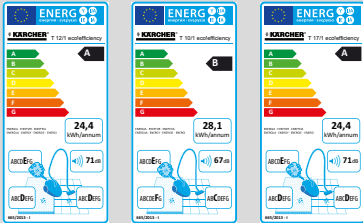
**FROM**  
**£ 359.00 p/w**





### ECO!EFFICIENCY DRY VACUUM CLEANERS

- 17, 12 & 10 litre container capacities are available
- Easy-change 12m detachable power cable reduces engineer call outs and repair bills
- Energy-efficient working with exceptional cleaning performance and low noise
- Anti-static suction bend as standard, reducing static shocks



T 17/1 eco! SSP  
**£ 179.00**

T 12/1 eco! SSP  
**£ 159.00**

T 10/1 eco! SSP  
**£ 119.00**



### DRILL DUST NOZZLE

DDN

- Dust-free working thanks to extraction of high (fine) dust amounts when use in conjunction with a vacuum cleaner
- Interruption-free working as operation with Tact system vacuum cleaners
- High flexibility due to movability button of drilling dust nozzle
- No batteries needed

SSP  
**£ 25.00**

**NEW**



### WET & DRY VACUUM CLEANER

NT 27/1

- Accessories can be attached to the container at the rear of the machine
- The extremely robust metal latches lock with extreme reliability
- Pleated cartridge filter for both wet and dry pick up
- Perfect for small areas due to its compact dimensions and easy portability

SSP  
**£ 149.00**



### INDUSTRIAL VACUUM CLEANER

IV 60/24-4 (240V & 110V)

- Single phase industrial vacuum to pick up liquids and oils as well as dry materials
- Two motors for powerful cleaning action, electronically controlled to avoid high starting currents
- Manual filter vibration increases the working time of the permanent filter, thereby reducing the maintenance effort
- Convenient storage basket on the chassis for holding nozzles, bends and other parts

240V SSP  
**£ 1,711.00**

240V FROM  
**£ 12.25 p/w**

110V SSP  
**£ 1,948.00**

110V FROM  
**£ 13.95 p/w**



## ZERO FORCE. FULL POWER.



Only one thing should come between you and your cleaning task: our new EASY!Force trigger gun. It gives you the power to use high pressure with ease. The revolutionary operating concept of the EASY!Force trigger gun uses the recoil force of the high-pressure jet and reduces the holding force for the trigger to zero. Absolutely zero. Designed for effortless, ergonomic and stress-free use.

EASY!Force is compatible with all Kärcher pressure washers\*, offering a new dimension in control and ergonomics, letting you clean effortlessly and with less stress, so you can focus on getting the job done.

**Try our EASY!Force trigger gun - you won't want to put it down.**



### HOT WATER PRESSURE WASHER

#### HDS 6/12 C

- User friendly single phase hot water pressure washer with compact design and small footprint
- 560 l/h flow rate and 120 bar pressure
- ecoefficiency saves up to 20% on fuel costs
- Kärcher standard single switch operation, detergent dosing and on-board storage
- 3-year heating coil warranty\*\*

SSP  
£ **1,824.00**

FROM  
£ **13.20 p/w**



### HOT WATER PRESSURE WASHER TRAILER

#### HDS 13/20 De Tr1

- Independent operation with integrated 500 litre water and 100 litre diesel tanks
- 1300 l/h flow rate and 200 bar pressure
- Reliability during daily use, thanks to tried and tested Kärcher components
- Flexibility of options in chassis types and performance to suit customer requirements
- **Ask your Kärcher representative for details**

SSP FROM  
£ **22,265.00**

FROM  
£ **160.00 p/w**

**ASK FOR A DEMO**

### COLD WATER PRESSURE WASHER

#### HD 5/11 P

- Light weight, compact and powerful - perfect for quick cleaning tasks where mobility is key
- Cleaning jobs made easy with 490 l/h flow rate and 110 bar operating pressure
- Design enables stand-up or lie flat operation
- The Dirt blaster with rotating pencil jet offers 10 times better cleaning performance and increased area performance

SSP  
£ **380.00**

FROM  
£ **2.70 p/w**



### COLD WATER PRESSURE WASHER

#### HD 6/13 CX Plus

- Great performance with a 590 l/h flow rate and 130 bar pressure, ideal for daily cleaning tasks
- Design enables stand up or lay flat operation
- Integrated detergent feed tube

SSP  
£ **799.00**

FROM  
£ **5.70 p/w**



**Claim FREE Hard Surface Cleaner & Nozzle Kit worth £150.00**

\*up to 300 bar, adapter may be required \*\*3-year heating coil warranty is subject to use of RM 110 (when required) and regular service of the machine.

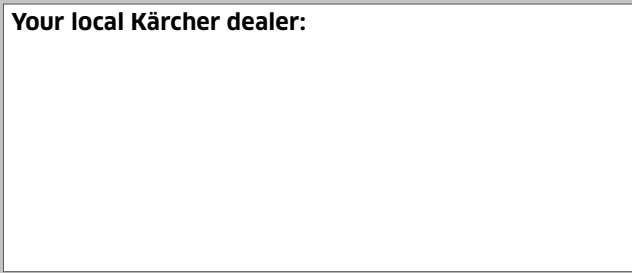
Please contact us for more information or to arrange a free site survey.

#### Kärcher (UK) Ltd.

Tel 01295 752 142  
Fax 01295 752 103

cleaning@karcher.co.uk  
www.karcher.co.uk/professional

#### Your local Kärcher dealer:



Specifications are subject to change without prior notice. Images are for illustration purposes only. All prices exclude VAT. E. & O.E.

'Price per week' and 'Just Add Water' pricing is based on regular payments being made over a 3 year term. This is not an offer to provide finance or any other terms. Prices quoted are subject to changes in funding costs, tax assumptions and credit policy. Any offer to provide finance will be subject to credit approval by Siemens Financial Services Limited and subject to terms and conditions. Provision of finance may be subject to Service, Administration, Facility and Annual Services Fees. Full details, terms and conditions for Just Add Water are available at [www.karcher.co.uk/justaddwater](http://www.karcher.co.uk/justaddwater).

## CLAIM YOUR FREE ITEM:

[www.karcher.co.uk/claim](http://www.karcher.co.uk/claim)



**Proof of purchase will be required. Claims must be submitted by 15<sup>th</sup> July 2017.**