

# KÄRCHER

makes a difference



## KÄRCHER MANAGE

Successful management of cleaning processes



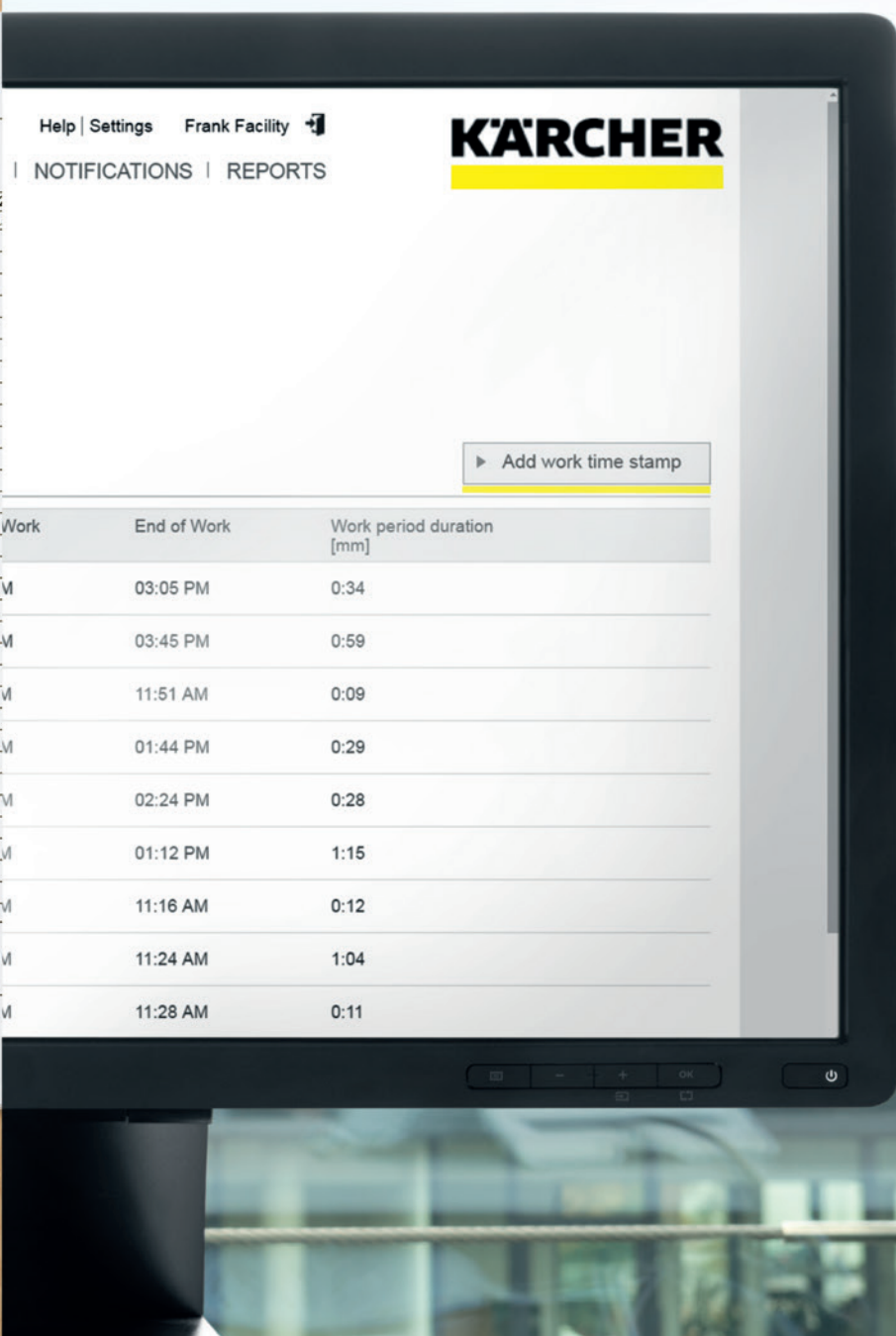
Working Hours		Employee: John Smith		Site: kv0		
Day	Kitchen Main Floor		Main Floor Office 201		Main Floor Office 202	
	In	Out	In	Out	In	Out
1						
2						
3			8:25	8:32		
4			8:22	8:33		
5			8:22	8:30		
6					8:00	
7					8:01	
8						
9						
10			7:57	8:10	8:12	
11			8:12	8:13	8:20	
12	7:55	8:03	8:05	8:13		
13	8:20	8:33	8:05	8:42		
14	8:07	8:12	8:20	8:31		
15						
16						
17						
18						
19						
20						
21						
22						
23						
24						
25						
26						
27						
28						
29						
30						
31						

Total Hours: \_\_\_\_\_

Manager's Signature \_\_\_\_\_



**SUCCESS IS GOING DIGITAL.**



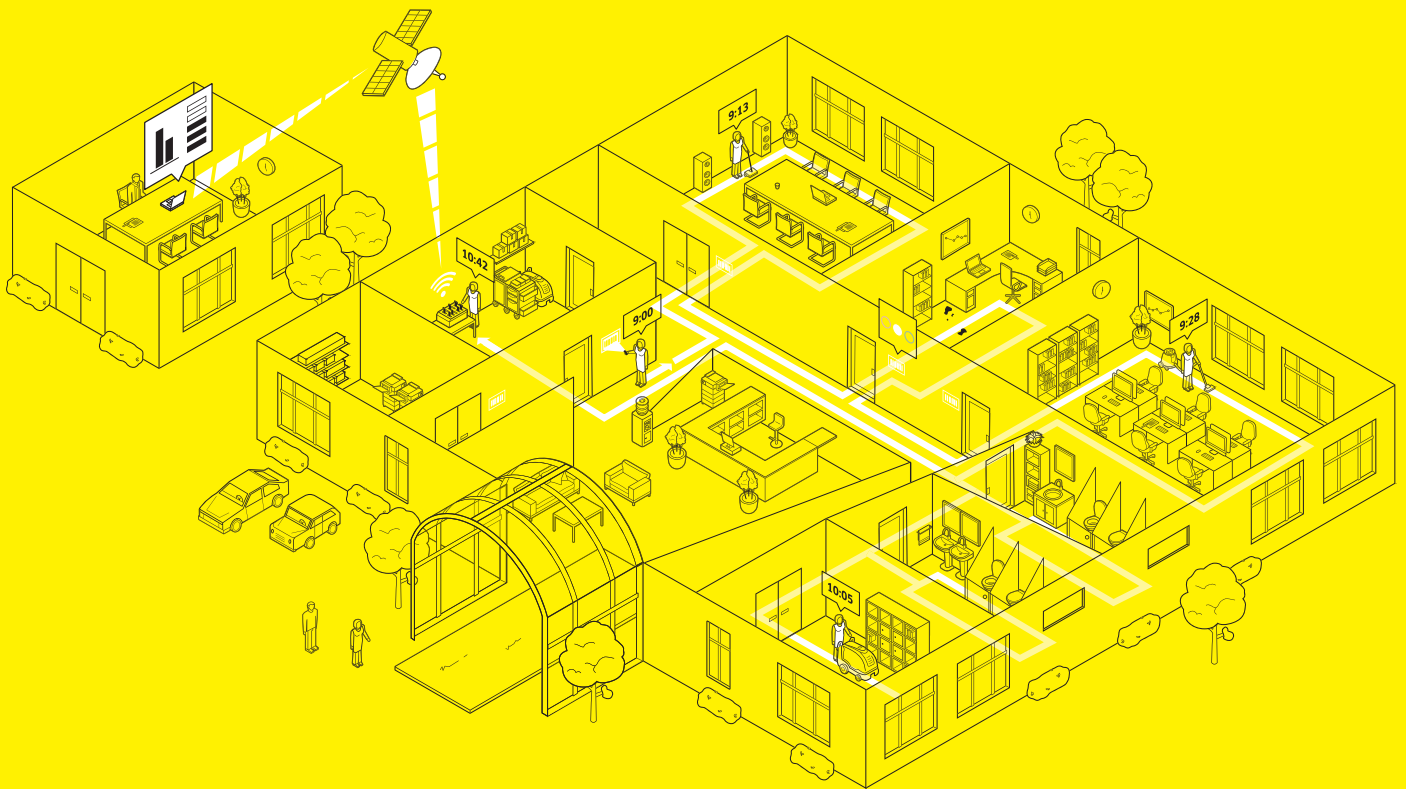
Manage and optimise your manual cleaning processes and workflows digitally. With Kärcher Manage, we offer you the software solution for the planning, monitoring and quality assurance of your tasks throughout the building.

# MANAGEMENT NEEDS RELIABLE INFORMATION.

Kärcher Manage provides you with all the information you need to optimise your cleaning and building management. The data required for this can be recorded and analysed easily. Kärcher Manage can be integrated seamlessly into your operational workflows and those of your employees. It is very user-friendly and intuitive, meaning that anyone can work with it without specific prior knowledge.

With Kärcher Manage, you can log working hours, cleaning times and cleaning outcomes in a fraction of the time previously required for this. Pen and paper have had their day. Your employees record the data, which is then transferred automatically into the system. You can carry out quality checks just as quickly using the Kärcher Manage app for smartphones.

Kärcher Manage optimises the exchange of information between cleaning personnel and facility managers or technicians. This means that cleaning personnel can notify the facility manager directly of exceptional or unusual incidents or special cleaning activities, for example. The facility manager does not lose any time, can track the activities in the online portal and is always up to date.



Kärcher Manage records data on working hours, cleaning duration and other activities. The data is transferred to the web portal automatically via the docking station.

### **Gather and analyse information in a meaningful way**

Kärcher Manage simplifies building and cleaning management. You can coordinate employees, tasks and resources more effectively.

- Fast and accurate recording and analysis of cleaning times and quality checks for more efficient organisation.
- Better overview of the actual duration of specific tasks. Optimised assignment of personnel and resources, as well as more efficient planning.
- Reliable recording of working hours and as proof for clients.
- Quality control features for increased cleaning quality. Your customers are satisfied and you can see at a glance which areas require improvement.
- The Kärcher Manage “Activities” feature facilitates dovetailing with other areas of building management by reporting incidents directly to the people responsible. They have a better overview of pending or already completed tasks, and are therefore in control of the processes.

# RECORDING DATA HAS NEVER BEEN EASIER.

In Kärcher Manage, data is recorded using handy barcode scanners and transferred automatically to the web-based Kärcher Manage portal via our innovative docking station. This means that the recorded information can be accessed quickly and from anywhere.



**Scanner and docking station** Kärcher Manage allows you to accurately record when cleaning personnel start work, enter and leave rooms, and finish work. The information is recorded by scanning locally applied barcodes. Moreover, activities such as special tasks and damage can be reported via special barcodes attached to the cleaning trolley.

Our barcode scanners are handy and user-friendly. Moreover, our scanners can be operated with wet hands or gloves problem-free. And they are extremely robust in day-to-day use.

You can define the data to be recorded via barcodes according to your requirements. This could be damage in a room (e.g. a faulty light), filling towel dispensers or any other task.

When the scanner is placed into the Kärcher Manage docking station, this reads the saved data automatically and transfers it to the web-based Kärcher Manage portal. Shortly afterwards, the data is available for access online. The docking station simultaneously recharges the scanner batteries so that these are always charged and ready to use.

With the docking station, you can very easily integrate Kärcher Manage into daily workflows. Install the docking station as a start and end point in the cleaning storeroom, for example. The data is transferred via mobile communication. The permanently installed SIM card transfers data free of charge and does not require LAN or WLAN access.



**Web portal** You can access the web-based Kärcher Manage portal from any computer with online access and an internet browser. There is no need to install specific software. Operation is simple and intuitive. Access is encrypted and password-protected – no one can access the data unauthorised. You define which employees can see which information via a special role system.

**The portal – your organisational centre**

- Access and evaluate working hours and cleaning times
- Access and analyse the results of quality checks
- Manage reports and activities: assign tasks, track completion status
- Create a wide range of reports and evaluations
- Create and manage cleaning entities with room schedules
- Create and manage cleaning personnel
- Change incorrect or missing data manually, for example if a cleaner has forgotten to scan

# THE APP YOU CAN RELY ON

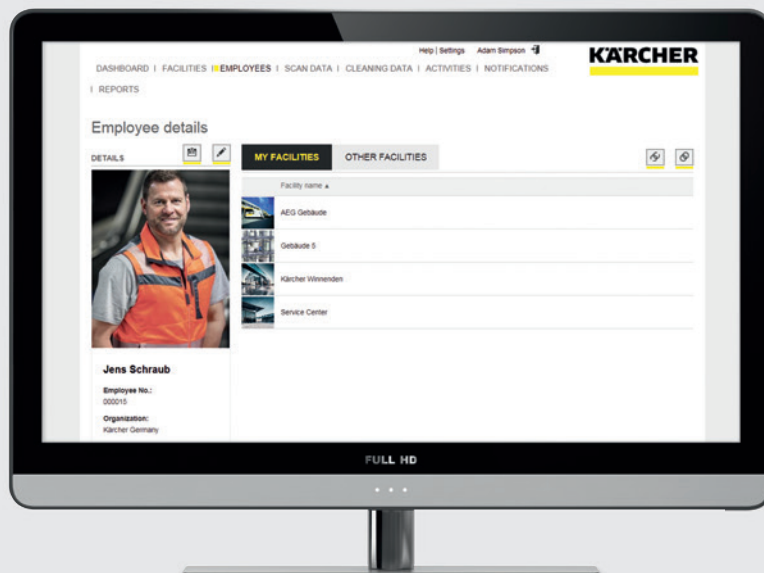
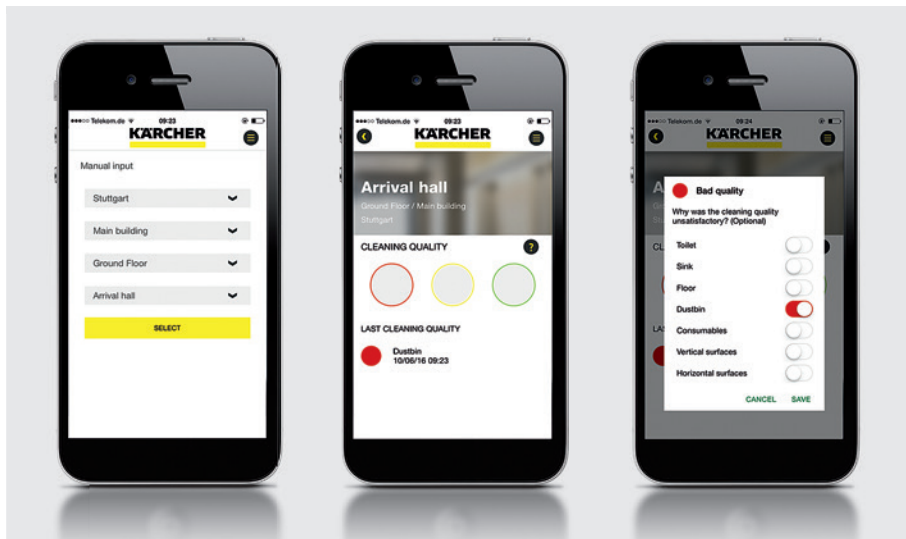
With the Kärcher Manage app, you can check the quality of every cleaning activity quickly and reliably. And you can efficiently manage information with optimum networking between all parties.



**Quality checks with the Kärcher Manage app** From damage reports to completed activities or work performance records - you will know. With the Kärcher Manage app, your facility managers can carry out quality checks on the spot quickly and reliably in different rooms and buildings. The recorded data is synchronised automatically by the smartphone and is available to you via the web portal immediately. Our Kärcher Manage app supports iOS and Android.

The cleaning quality is assessed using an intuitive traffic light system. The app can also be used to give reasons for a negative assessment, for example dirt on the floor or tables, inadequate cleaning of toilets, or waste bins that have not been emptied. This allows you to identify possible problem areas and determine the causes and individual training needs.





### Manage outstanding tasks with a complete overview

With the Kärcher Manage web portal, you or your representatives have an overview of all of the important information at all times: from the recording of working hours and cleaning times to planning and tracking special cleaning activities and repairs. You can see which activities are pending, which are still underway, whether and to whom these have been assigned and which have already been completed. Coordinating various contractors and employees from areas such as electrics, maintenance and hygiene has never been so easy.

Your Kärcher Manage web portal shows you all of the recorded information with its status. You can even turn events which require a reaction into tasks automatically and assign the relevant employees. In the case of a faulty light, for example, a request can be sent automatically to the electrician listed.

The different types of information that you can record and manage with Kärcher Manage can easily be tailored to the precise needs of your customer. Kärcher Manage is your control centre for managing all tasks, from gardening tasks to disinfection verification or completion of winter service.

# TURN DATA INTO MEASURABLE ADDED VALUE.

Kärcher Manage helps you make the most of your potential. Systematic recording and utilisation of relevant data on cleaning and facility management form the basis of more reliable decision-making. With a better overview, complete transparency and faster reactions, you can achieve much higher efficiency.

**Kärcher Manage** Our solution for your tasks: time is money. And saving time means saving money. We all make mistakes, but with greater transparency these can be reduced to a minimum. With Kärcher Manage, you get all of the information you need to improve manual cleaning processes in the long term. This gives you major competitive advantages as a building service contractor. You can demonstrate every activity, point by point, to your customers. You can accomplish tasks more quickly and in a more controlled manner. Easily, reliably and much more efficiently. Your Kärcher Manage: comprehensive, accurate information – not a paper chase.



# **ADVANTAGES AT A GLANCE:**

- Optimise cleaning processes
- Easy quality control
- Fast reporting of events and activities
- Electronic logging of working hours
- Verification of work to customers
- Overview of pending activities and special cleaning activities

Please contact us for more information:

#### **Head Office Germany**

Alfred Kärcher GmbH & Co. KG  
Alfred-Kärcher-Straße 28-40  
71364 Winnenden

Phone +49 7195-14-0  
Fax +49 7195-14-2212

[www.kaercher.com](http://www.kaercher.com)

#### **North America**

Kärcher North America  
4555 Airport Way  
Denver, CO 80239  
USA

Phone +1 303-738-5805  
Fax +1 303-865-2758

[www.karcherna.com](http://www.karcherna.com)

#### **United Kingdom**

Kärcher (UK) Ltd  
Kärcher House  
Brookhill Way  
Banbury  
Oxon OX16 3ED

Phone +44 1295-752-000  
Fax +44 1295-752-103

[www.karcher.co.uk](http://www.karcher.co.uk)

#### **Ireland**

Kärcher Ltd  
Unit 4  
E.P. Mooney Business Park  
Walkinstown Avenue  
Dublin 12

Phone +353 1-409-7777  
Fax +353 1-409-7775

[www.karcher.ie](http://www.karcher.ie)

#### **South East Asia**

Regional Head Office  
South East Asia  
Kärcher South East Asia Pte Ltd  
3 Depot Close #05-01  
Singapore 109840

Phone +65 6897-1811  
Fax +65 6897-1611

[www.karcher.com.sg](http://www.karcher.com.sg)

#### **Hong Kong**

Kärcher Limited  
Unit 05, 13/F, Nanyang Plaza  
57 Hung To Road  
Kwun Tong, Kowloon

Phone +852 2-357-5863  
Fax +852 2-357-5632

[www.karcher.com.hk](http://www.karcher.com.hk)

#### **Australia**

Kärcher Pty Ltd  
40 Koornang Road  
Scoresby VIC 3179  
Melbourne, Victoria

Phone +61 3-9765-2300  
Fax +61 3-9765-2398

[www.karcher.com.au](http://www.karcher.com.au)

#### **New Zealand**

Kärcher Ltd  
66 Allens Road  
East Tamaki  
Auckland 2013

Phone +64 9-274-4603  
Fax +64 9-274-6932

[www.karcher.co.nz](http://www.karcher.co.nz)

#### **South Africa**

Kärcher (Pty) Ltd  
Cnr Mount Joy & George Allen Rd  
Wilbart Ext. 2  
PO Box 11818  
Vorna Valley, 1686

Phone +27 11-657-7300  
Fax +27 11-657-7440

[www.karcher.co.za](http://www.karcher.co.za)

#### **Dubai**

Kärcher FZE  
Quality Cleaning Systems  
Jebel Ali Free Zone  
Plot No. S-10104 South Zone  
RA 08, XB 1, Jebel Ali

Phone +971 4-886-1177  
Fax +971 4-886-1575

[www.kaercher.com](http://www.kaercher.com)