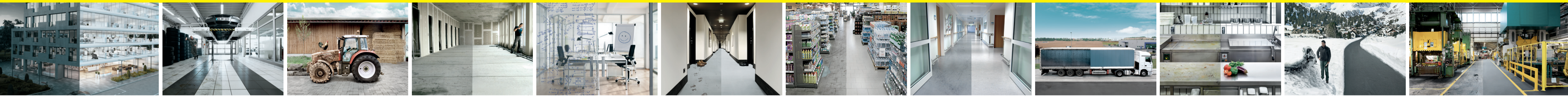


KÄRCHER PROFESSIONAL 2017



HOT WATER HIGH-PRESSURE CLEANERS



WET AND DRY VACUUM CLEANERS



CARPET CLEANERS



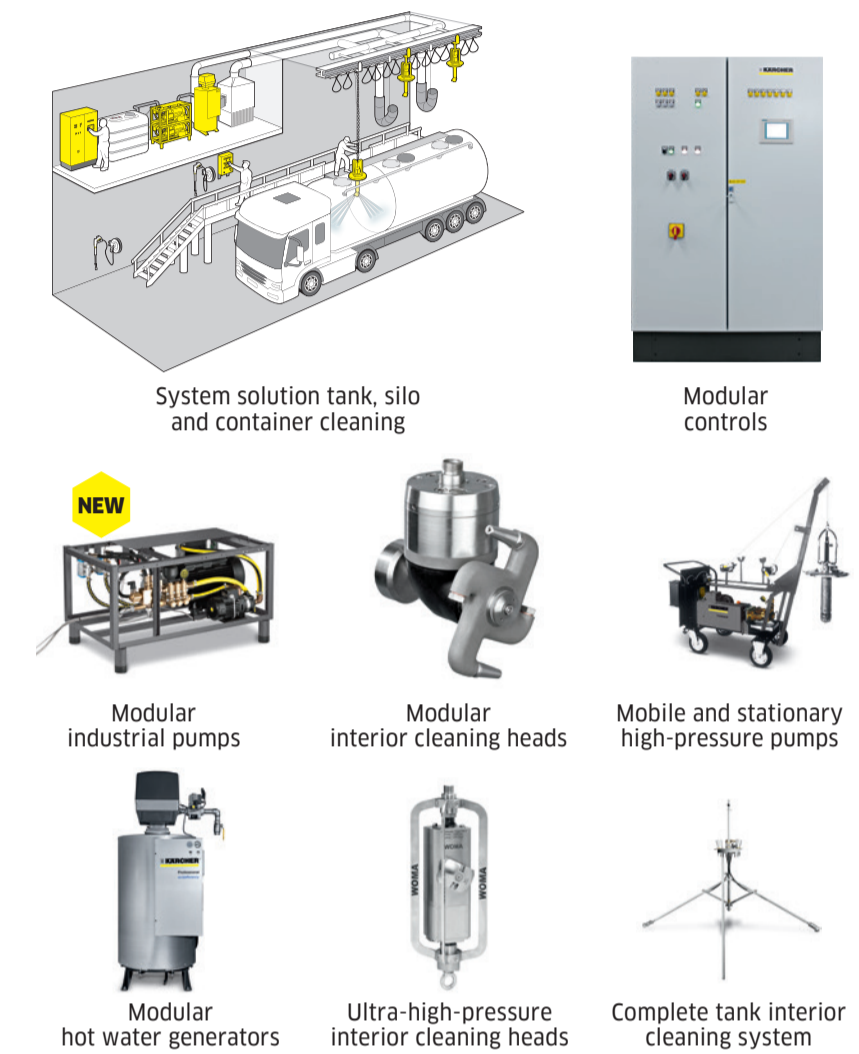
SCRUBBERS/SCRUBBER DRIERS



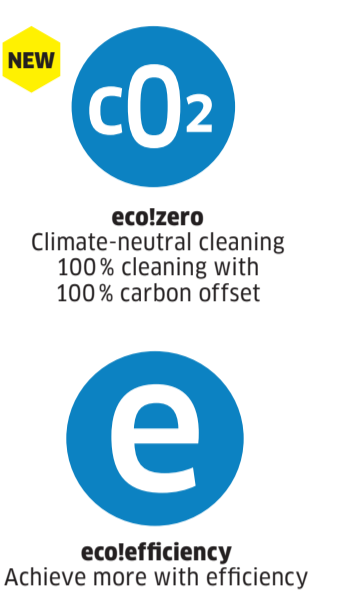
VACUUM SWEEPERS AND MUNICIPAL IMPLEMENT CARRIERS



SYSTEM SOLUTION FOR CONTAINER CLEANING



eco:zero ecoefficiency



COLD WATER HIGH-PRESSURE CLEANERS



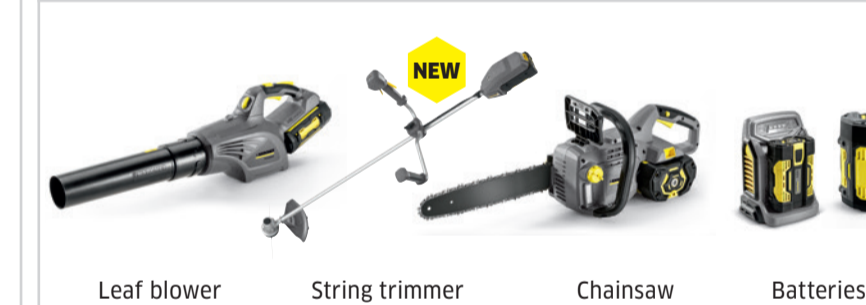
INDUSTRIAL VACUUMS



CARPET CLEANERS ACCESSORIES/ADDITIONS



PARK & CITY SOLUTIONS



WATER RECLAMATION



STATIONARY HIGH-PRESSURE CLEANERS



DRY VACUUM CLEANERS



STEAM CLEANERS AND STEAM VACUUM CLEANERS



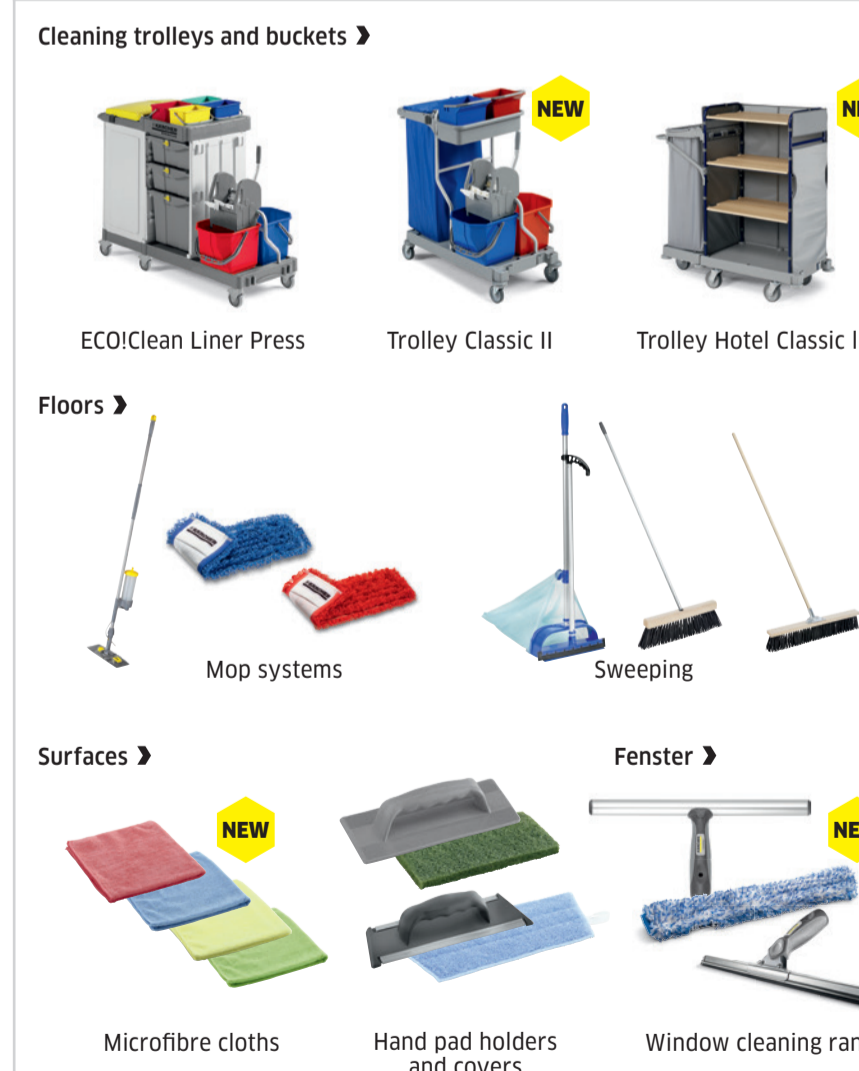
ULTRA HIGH-PRESSURE CLEANERS



VACUUM CLEANERS ACCESSORIES/ADDITIONS



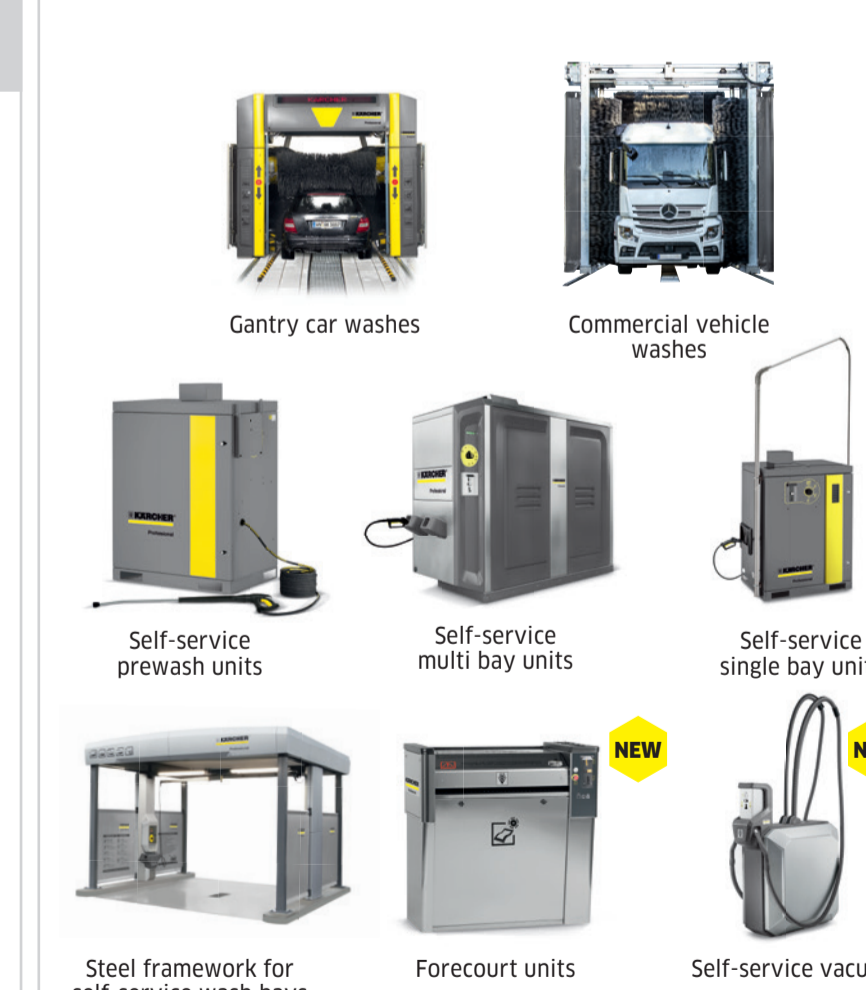
MANUAL CLEANING EQUIPMENT



SWEEPERS/VACUUM SWEEPERS



VEHICLE CLEANING



HIGH-PRESSURE CLEANERS ACCESSORIES



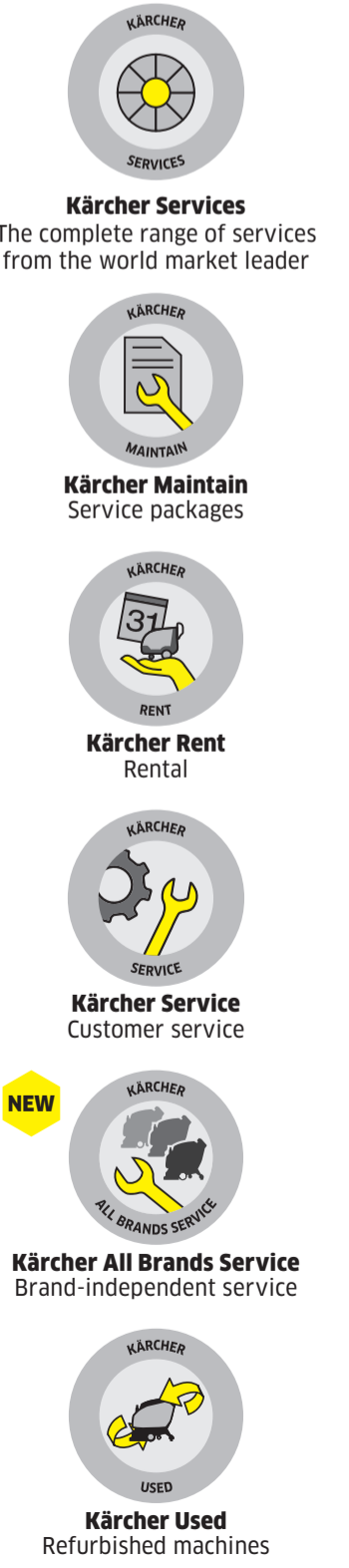
DRINKING WATER



DRY ICE CLEANING



SERVICES



PARTS CLEANING



WORK PROTECTION



CLEANING AND CARE AGENTS - FOR ANY APPLICATION



TECHNICAL DATA AT A GLANCE

HOT WATER HIGH-PRESSURE CLEANERS

Model	Spray voltage (phase)	Connection load (kW)	Flow rate (l/min)	Nozzle pressure (bar/MPa)	Working pressure (bar/MPa)	Max. temperature (°C)
HDS Super class						
HDS 12/20-4.5 I SX	3	9.3	600-1300	30-200/3-20	80/155	
HDS 12/18-4.5 I SX	3	8.4	600-1200	30-180/3-18	80/155	
HDS Middle class						
HDS 9/12-4 M MX	3	7.8	500-1000	30-200/3-20	80/155	
HDS 9/18-4 M MX	3	6.4	450-900	30-180/3-18	80/155	
HDS 8/18-4 M MX	3	5.5	400-800	30-180/3-18	80/155	
HDS 7/12-4 M MX	1	3.4	350-700	30-120/3-12	80/155	
HDS Compact class						
HDS 8/18-4 C CX	3	6	300-800	30-180/3-18	80/155	
HDS 8/12 C CX	3	5.7	290-760	30-170/3-17	80/155	
HDS 5/13 U LIX	1	2.6	500	30-100/3-10	80/155	
HDS 6/14 C CX	1	3.6	240-560	30-140/3-14	80/155	
HDS 6/14 C CX	1	3.6	240-560	30-140/3-14	80/155	
HDS 5/12 C CX	1	2.9	500	30-120/3-12	80	
HDS Upright class						
HDS 5/15 U LIX	1	2.7	450	150/15	80	
HDS 5/13 U LIX	1	2.6	500	120/12.5	80	
HDS 5/13 U LIX	1	2.2	450	110/11	80	
HDS Trailer						
HDS 9/12 De Tr1	-	-	500-900	150-500/15-50	85/88	
HDS 13/20 De Tr1	-	-	650-1300	100-500/10-50	85/88	
HDS 17/20 De Tr1	-	-	900-1700	70-200/7-20	80/98	
HDS 13/20 De Tr1	-	-	900-1300	50-200/5-20	85/98	
HDS Special class						
HDS 2000 Super	3	2 + 6.7	800-1850	30-180/3-18	80/98	
HDS E 8/16-4 M 36 kW	3	4.5	300-760	30-160/3-16	58/85	
HDS E 8/16-4 M MX Plus	3	29.5	300-760	30-160/3-16	45/85	
HDS 10/25-4.5 I Plus SX Plus	3	17.5	300-760	30-160/3-16	30/85	
HDS with combustion engine						
HDS 1000 De	-	-	450-900	40-200/4-20	98/80	
HDS 1000 Be	-	-	450-900	40-210/4-21	98/80	
HDS 901 D 1 B	-	-	600	140/14	80	

COLD WATER HIGH-PRESSURE CLEANERS

Model	Spray voltage (phase)	Connection load (kW)	Flow rate (l/min)	Max. pressure (bar/MPa)	Working pressure (bar/MPa)	Max. temperature (°C)
HD Super class						
HD 12/18-4.5 Plus I SX Plus	3	9.4	650-1700	154/15.4	30-140/3-14	
HD 13/18-4.5 Plus I SX Plus	3	9.2	650-1300	188/18.8	30-180/3-18	
HD 10/25-4.5 I Plus SX Plus	3	9.2	500-1000	275/27.5	30-250/3-25	
HD 10/25-4.5 I Plus SX Plus	3	7.8	1000	253/25.3	330/33	
HD Middle class						
HD 9/20-4 M M Plus I MX Plus	3	7	460-900	220/22	40-200/4-20	
HD 9/19 M M Plus I MX Plus	3	6.8	450-890	220/22	40-185/4-18.5	
HD 9/18-4 M M Plus I MX Plus	3	5	240-700	215/21.5	30-180/3-18	
HD 6/16-4 M M Plus I MX Plus	1	3.4	330-600	190/19	30-160/3-16	
HD Compact class						
HD 7/18 C C Plus I CX Plus	3	4.7	240-700	215/21.5	20-175/2-17.5	
HD 6/15 C C Plus I CX Plus	1	3.1	230-560	190/19	30-150/3-15	
HD 6/12-4 C C Plus I CX Plus	1	2.8	300-600	160/16	10-120/2-12	
HD 5/17 C C Plus I CX Plus	1	3	500	200/20	170/17	
HD 6/13 C C Plus I CX Plus	1	2.9	560	190/19	130/13	
HD 5/15 C C Plus I CX Plus	1	2.8	500	200/20	150/15	
HD 5/12 C C Plus I CX Plus	1	2.5	500	175/17.5	120/12	
HD Portable class						
HD 5/11 P P Plus	1	2.2	490	160/16	110/11	
HD Special class						
HD 20/15-4 Cage Plus	3	12.5	500-2500	190/19	30-150/3-15	
HD 6/15 C Cage Plus	3	11	500-2000	190/19	30-150/3-15	
HD 16/15-4 Cage Plus	3	9.5	500-1600	190/19	30-150/3-15	
HD 10/25-4 Cage Plus	3	9.2	1000	273/27.3	250/25	
HD 115	3	4.7	250-700	175/17.5	10-150/1-15	
HD 10/25-4 Cage Plus	1	3	240-650	125/12.5	10-110/1-11	
HD 10/16-4 Cage Plus	3	3.5	1000	220/22	160/16	
HD 10/15-4 Cage Plus	3	4.4	440-900	175/17.5	20-145/2-14.5	
HD 7/10 CXF	3	4.5	250-700	120/12	10-100/1-10	
HD with combustion engine						
HD 9/23 De I G	-	-	400-930	250/25	40-230/4-23	
HD 9/21 G	-	-	300-850	230/23	10-210/1-21	
HD 8/20 G	-	-	300-750	230/23	10-200/1-20	
HD 7/15 G	-	-	650	160/16	150/15	
HD 7/20 G	-	-	650	160/16	150/15	
HD Classic						
HD 9/20-4 Classic	3	6.9	520-900	240/24	70-200/7-20	
HD 7/18-4 Classic	3	4.9	520-700	200/20	70-180/7-18	
HD 6/15-4 Classic	1	3.4	450-600	190/19	70-150/7-15	
HD 7/11-4 Classic	1	2.9	520-700	150/15	70-110/7-11	
HD 5/11 Cage Classic	1	2.2	500	160	110/11	
HD 5/12 Cage Classic	1	2.9	460-900	240/24	70-180/7-18	
HD 7/16-4 Cage Classic	3	4.3	400-700	220/22	70-160/7-16	
HD 7/11-4 Cage Classic	1	2.9	520-700	220/22	70-110/7-11	
HD 8/23 C Classic	-	-	800	280/28	230/23	
HD 7/20 C Classic	-	-	700	250/25	200/20	
HD 6/15 G Classic	-	-	600	200/20	150/15	

HIGH-PRESSURE CLEANERS ACCESSORIES

Model	Weight (kg)	Working width (mm)	Machine flow rate (l/min)	Length (m)	Material
Solar panel cleaner					
Solar brush 400	2.8	400	700-1000/1100-1300	-	-
Solar brush 800	7	800	700-1000/1100-1300	-	-
Solar lance TL 7 H	3.5	-	-	2.4-10.2	Hybrid
Solar lance TL 10 H	4	-	-	2.4-10.2	Carbon
Solar lance TL 10 C	3.7	-	-	2.4-10.2	Carbon
Solar lance TL 14 C	5	-	-	2.4-14	Carbon
Barrel cleaner					
BC 10/12	4.8	80	max. 120/12	600-1400	36
Weight (kg)					
Max. inlet temperature (°C)					
Area performance (m²/h)					
Inlet rate (l/min)					
Flow rate (l/min)					
Cleaning cycle (s)					
Max. temperature (°C)					
Weight (kg)					
Diameter (mm)					
Flow rate (l/min)					
Working pressure (bar)					
Max. temperature (°C)					

Model	Weight (kg)	Working width (mm)	Area performance (m²/h)	Inlet rate (l/min)	Flow rate (l/min)	Cleaning cycle (s)	Max. temperature (°C)
Wheel removal							
WR 50	21	500	150-350	5.8-8.3	100		
WR 20	0.3	200	80-125	8.3-16.7	100		
Surface cleaners							
FR Classic	1.6	300	max. 600	max. 150	40		
FR 30	2.7	300	max. 600	max. 180	60		
FR 30 Me	4.2	300	max. 1300	max. 250	85		
FR 50 Me	14.3	500	max. 1800	max. 250	85		
Surface cleaner with suction							
FRV 30	5.5	300	max. 1300	max. 250	60		
FRV 30 Me	7.5	300	max. 1300	max. 250	85		
FRV 50 Me	16.9	500	max. 2000	max. 250	85		

STATIONARY HIGH-PRESSURE CLEANERS

Model	Spray voltage (phase)	Connection load (kW)	Flow rate (l/min)	Nozzle pressure (bar/MPa)	Working pressure (bar/MPa)	Max. temperature (°C)
Stationary hot water high-pressure cleaners, single-lance operation						
HDS 12/14-4 ST Gas	3	7.5	600-1200	30-140/3-14	155/80	
HDS 12/14-4 ST Gas LPG	3	7.5	600-1200	30-140/3-14	98	
HDS 9/18-4 ST Gas	3	6.4	500-900	30-140/3-14	155/80	
HDS 9/18-4 ST Gas LPG	3	6.4	500-900	30-140/3-14	98	
HDS 6/12-4 ST Gas	3	4.4	300-700	30-160/3-16	98	
Stationary cold water high-pressure cleaners, multiple-lance operation						
HDC 120/10	3	44.5/46	700-1200	100/10	100	85
HDC 90/10	3	33.5/35	700-800	100/10	85	
HDC 60/10	3	22.5/24	700-600	100/10	85	
HDC 80/16	3	45/46	700-800	160/16	85	
HDC 80/08	3	23/24	700-600	80/8	85	
HDC 60/16	3	34/35	700-600	160/16	85	
HDC 40/16	3	17.5/18.9	700-600	80/8	85	
HDC 40/16	3	23/24	700-400	160/16	85	
HDC 40/08	3	12/13	700-400	80/8	85	
HDC 20/16	3	11.5/12	700-200	160/16	85	
HDC 20/08	3	7	700-200	80/8	85	
Stationary cold water high-pressure cleaners, single-lance operation						
HD 12/12-4 ST	3	6.4	650-1300	30-120/3-12	70	
HD 9/18-4 ST	3	6.4	460-900	40-180/4-18	70	
HD 7/16-4 ST	3	4.4	300-700	30-160/3-16	70	

ULTRA HIGH-PRESSURE CLEANERS

Model	Spray voltage (phase)	Connection load (kW)	Flow rate (l/min)	Motor rating (kW)	Motor speed (rpm)	Max. flow rate (l/min)	Max. working pressure (bar/MPa)	Max. inlet temperature (°C)	Energy efficiency class
UHP Super class									
HDW 12/280 De Skid Classic	3	125	1200	1200	2800/280				A
HDW 4/25 De Skid Classic	3	1.29	4320		750/75				A
UHP Middle class									
HDW 12/100-4 Skid Classic	3	37	1200	1000	100/100				A
UHP Compact class									
HD 18/5-4 Cage Adv I Classic	3	30	1800	500	500/50				A
HD 9/5-4 Cage Adv I Classic	3	15	900	500	500/50				A
HD 13/35-4 Cage Adv I Classic	3	15	1300	350	350/35				A
HD 9/5-4 Cage Adv I Classic	3	16	900	500	500/50				A
HD 13/35-4 Cage Adv I Classic	3	16	1300	350	350/35				A

WET AND DRY VACUUM CLEANERS

Model	Air flow (l/s)	Volume (l/min)	Max. dust input power (W)	Max. rated input power (W)	Sound pressure level (dB(A))
Tact class					
NT 75/2 Me Te Me	2 + 74	254/25.4	75	2760	73
NT 75/2 Tact Me	2 + 74	254/25.4	75	2760	73
NT 60/2 Tact Me	2 + 74	254/25.4	65	2760	73