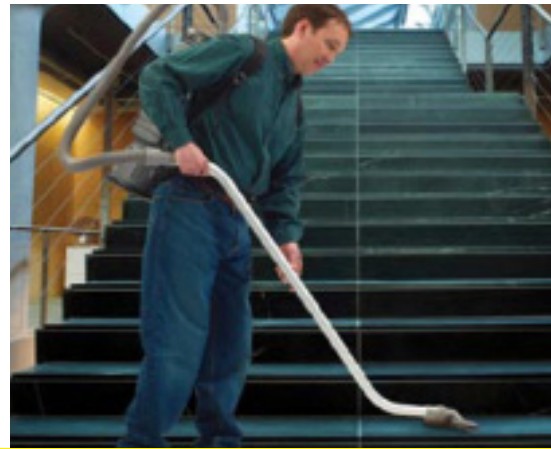


# KÄRCHER

makes a difference



## EXTREME PORTABILITY.

Powerful back pack vacuum.

# BV 11/1 HEPA



## Productivity with more comfort.

The BV 11/1 HEPA is a portable back mounted vacuum great for increasing productivity, efficiency, while saving you money. It now features HEPA filtration standard. The BV 11/1 HEPA is available in six or ten quart filter bag designs with a powerful 1.6 hp vacuum motor. We made this the most comfortable back mounted vacuum available with light weight and ergonomic harness system. To ensure ultimate air quality we designed this machine with four-stage vacuum filtration.



### 1 Powerful and durable

Rugged molded polyethylene housing easily endures knocks and bumps associated with commercial cleaning tasks.

Large 10 quart capacity extends working times.

Quiet operation: 67 dBA prevents disruptive cleaning.

### 2 Smart features

Light weight and comfortable harness is designed with padded hip and shoulder straps, and is adjustable to fit virtually any size operator.

360 degree swivel at the top of the machine allows for easy operation and prevents the hose from becoming tangled and kinked when in use.

Power switch mounted on hip for quick on and off within easy view and reach of the operator.

# Technical data and equipment.

## BV 11/1

- 2.5 gallon capacity
- Ergonomically designed
- 6-piece tool kit
- Molded polyethylene housing

### Technical data

<b>Air flow rate</b>	<b>cfm</b>	112 cfm (52 l / s)
<b>Water lift rating</b>	<b>inches</b>	104" water lift
<b>Container capacity</b>	<b>gallons</b>	1.5 / 2.5 gallon
<b>Max. power rating</b>	<b>hp</b>	1.6 hp - 1300 W, flow through design with internal thermal protection
<b>Hose length / diameter</b>	<b>inches</b>	5' / 1.5" (1.5 m / 38 mm)
<b>Cable length</b>	<b>feet</b>	50' (15.2 m)
<b>Operating noise level</b>	<b>dB(A)</b>	67 dB(A)
<b>Weight</b>	<b>lbs</b>	11 lbs (5 kg)
<b>Dimensions (L x W x H)</b>	<b>inches</b>	23.7" x 8.8" x 10.5" (602 mm x 215 mm x 268 mm)

### Equipment

Product	Order No.	Description
BV 11/1 HEPA	9.840-514.0	10-quart back pack vacuum

### Accessories

Order No.	Description
■ 8.619-894.0	4' x 1.5" Hose
■ 8.628-666.0	Two Piece Aluminum Wand
■ 8.628-445.0	Floor Tool
■ 8.619-876.0	Crevice Tool
■ 8.600-008.0	Upholstery Tool
■ 8.600-007.0	Dusting Brush
■ 8.619-884.0	Synthetic Filter Insert
■ 8.619-885.0	Sample Paper Filter Bag (1 only - see below for replacements)
■ 8.619-875.0	50' Electric Cord
□ 8.619-885.0	Paper Filter Bags- 10 pieces
□ 8.602-579.0	High Efficiency Filter Kit (Includes 10 bags & 2 motor filters)
□ 9.512-748.0	Turbo Floor Tool Kit (suction-operated floor power brush & wand)

■ Included □ Optional

Please contact us for more information:

**North America**

4555 Airport Way  
Denver, CO 80239  
U.S.A.

Phone 888-805-9852  
Fax 800-248-8409

**Canada**

6535 Millcreek Drive  
Unit 67  
Mississauga, ON L5N 2M2  
Canada

Phone 905-672-8233  
Fax 905-672-3155

[www.kaercher.com/ca](http://www.kaercher.com/ca)